



## Features

### ❖ Landscaped Features:-

Landscaped Garden with Family Sit-outs  
Children's Zone with Toddlers Play Area  
Senior Citizen's Spot  
Jogging Track & Walkways  
Adda Zone for Chit-shat  
Cycling Track

### ❖ Clubhouse Features- EUPHORIA:-

Banquet & Community Hall  
Landscaped Deck  
Business Centre  
Home Theatre with Surround Sound  
Indoor Games Room with Table Tennis  
Pool, Carrom, Darts, Cards & Chess

### ❖ Apartment Features:-

Meticulous Planning to Ensure Spacious Living  
Uninterrupted Natural/Views with Ample Light & Cross  
Ventilation  
Designer Bathroom with Branded Sanitary Ware

### ❖ Health & Wellness Features:-

Swimming Pool  
Box Cricket with Net  
Steam & Jacuzzi  
Multipurpose Sports Court  
Hi-tech A/C Gymnasium  
Yoga & Meditation Zone

### ❖ Tower Features & Facilities:-

Designer Lobby  
Modern Elevators  
Advanced Security with 24x7 CCTV Surveillance



## Specifications

### ❖ **Doors & Windows:-**

**Main Entrance Door:** Decorative Flush Door with Lock

**Internal Doors:** Flush Doors Painted on Both Sides

**Windows:** Powder Coated Aluminum or UPVC Windows with clear Glass

### ❖ **Toilets:-**

**Flooring:** Anti-skid Ceramic Tiles

**Wall & Ceiling:** Designer Ceramic Tiles up to Door Height, POP finish

**Sanitary Ware:** Parry Ware/Hind Ware or Equivalent

**CP Fittings:** Jaquar or Equivalent

### ❖ **Safety & Security:-**

Intercom System

24x7 CCTV Surveillance System for Common Areas

Modern Fire Fighting & Alarm System as per Government Regulations

### ❖ **Living, Dining & Bedrooms:-**

**Flooring:** Vitrified Tiles

**Wall & Ceiling:** POP finish

### ❖ **Electrical:-**

Concealed Copper Wiring

Modular Switches or Reputed Make

A/C Points in Living Room & all Bedrooms

24x7 Power Back-up for Common Areas

### ❖ **Common Areas:-**

**Main Entrance Lobby:** Exquisitely Designed with Marble/Granite/Tiles

**Floor Lobbies:** Vitrified Tiles

**Staircase:** Kota Stone

**Elevators:** Automatic Elevators of Otis/Kone/Schindler or Equivalent Make

### ❖ **Kitchen:-**

**Flooring:** Antiskid Ceramic tiles





**Wall & Ceiling:** Ceramic tiles up to two feet above counter level, POP finish

**Counter:** Granite Counter top

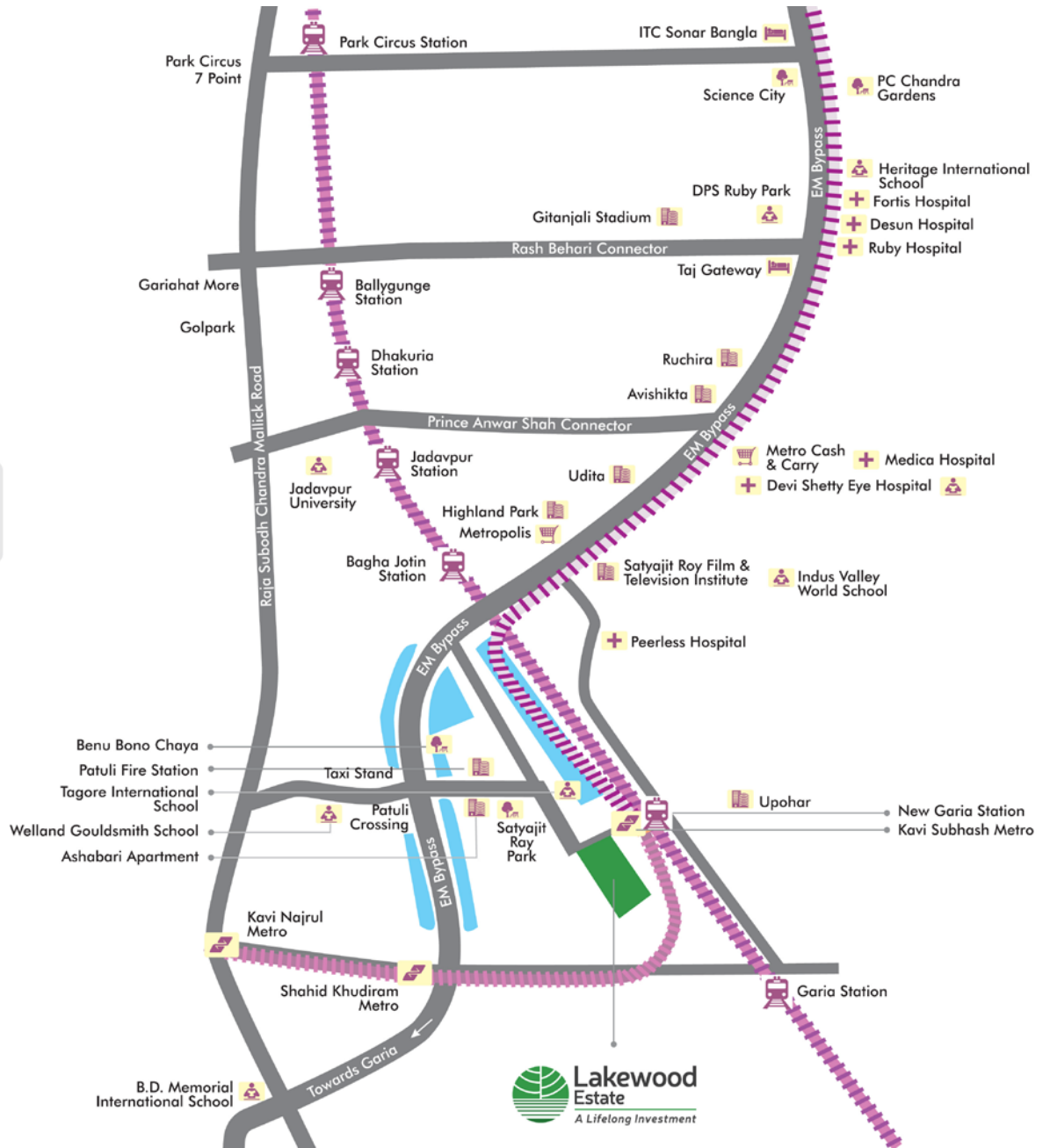
**Fittings & Fixtures:** Stainless steel sink & provision for Exhaust

**CP Fitting:** Jaquar or equivalent

# Location

-  Hotel
-  Education
-  Hospital
-  Entertainment Park
-  Shopping Mall
-  Landmark
-  Metro Rail Station
-  Railway Station

-  Eastern Railway (Sealdah South Div)
-  Metro Railway
-  Upcoming Metro Railway



# Type & Area

## Master Plan

### Master Plan



#### Legend

- |                               |                           |                                  |                          |
|-------------------------------|---------------------------|----------------------------------|--------------------------|
| 1 Signage Wall                | 8 Seating Area            | 15 Outdoor Fitness Zone          | 22 Seating under Pergola |
| 2 Main Entry/Exit Gate        | 9 Adda Zone               | 16 Main Swimming Pool            | 23 Garden Pavilion       |
| 3 Open Car Parking            | 10 Yoga/Meditation Garden | 17 Jacuzzi                       | 24 Sports Court          |
| 4 Entry Through Portals       | 11 Kids Play Area         | 18 Water Feature with Knife Edge | 25 Seating Tiers         |
| 5 Cricket Net Practice        | 12 Rock Climbing Wall     | 19 Loungers Under Trellis        | 26 Private Terrace       |
| 6 Drop-off Area               | 13 Elders Seating Area    | 20 Pool Deck                     |                          |
| 7 Feature Wall with Sculpture | 14 Water Feature          | 21 Multipurpose Lawn             |                          |

Podium View

Podium View



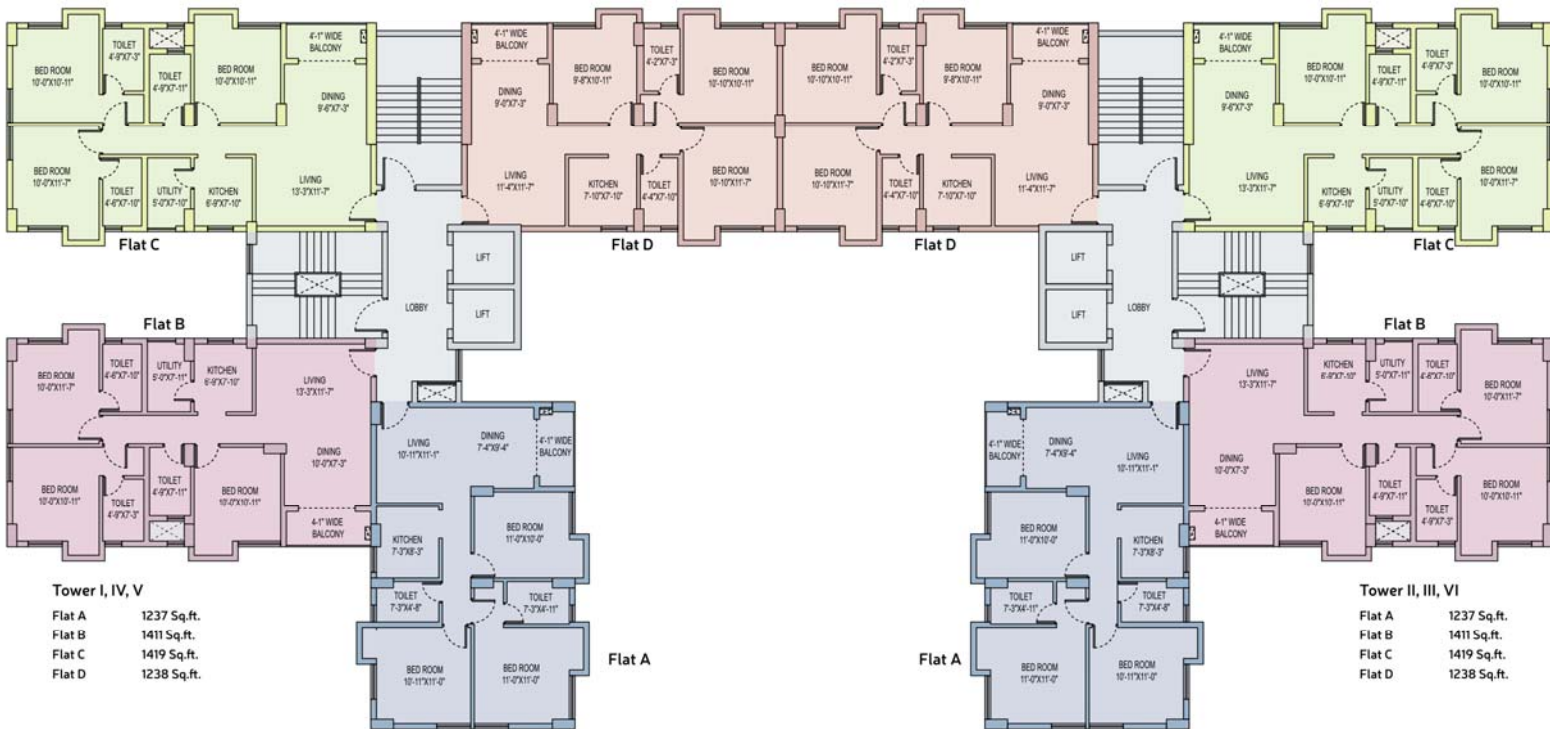
Legend

- |                          |                                  |                                |
|--------------------------|----------------------------------|--------------------------------|
| 1 Yoga/Meditation Garden | 10 Main Swimming Pool            | 19 Indoor Children's Play Area |
| 2 Gymnasium              | 11 Jacuzzi                       | 20 Community Hall              |
| 3 Kids Play Area         | 12 Water Feature with Knife Edge | 21 Business Center             |
| 4 Elders Seating Area    | 13 Seating under Pergola         | 22 Card Room                   |
| 5 Water Feature          | 14 Garden Pavilion               | 23 Indoor Games                |
| 6 Outdoor Fitness Zone   | 15 Badminton Court               | 24 Pool Room Gents             |
| 7 Loungers under Trellis | 16 Seating Tiers                 | 25 Pool Room Ladies            |
| 8 Pool Deck              | 17 Private Terrace               | 26 Pantry Services             |
| 9 Multipurpose Lawn      | 18 Home Theatre                  | 27 Deck Lounge                 |

## Typical Floor Plan

### Plans

#### Typical Floor Plan

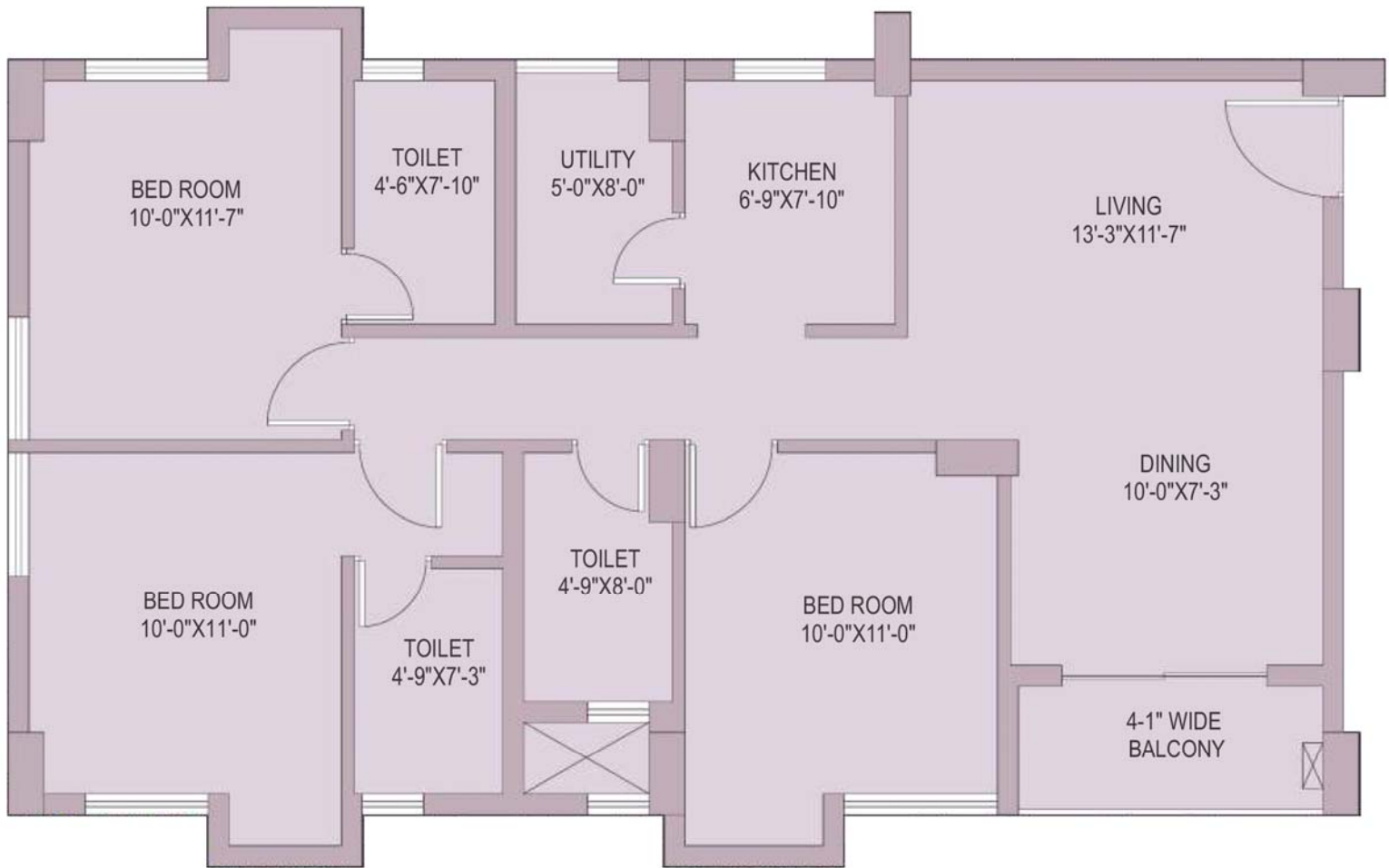


Flat- A (3 BHK)

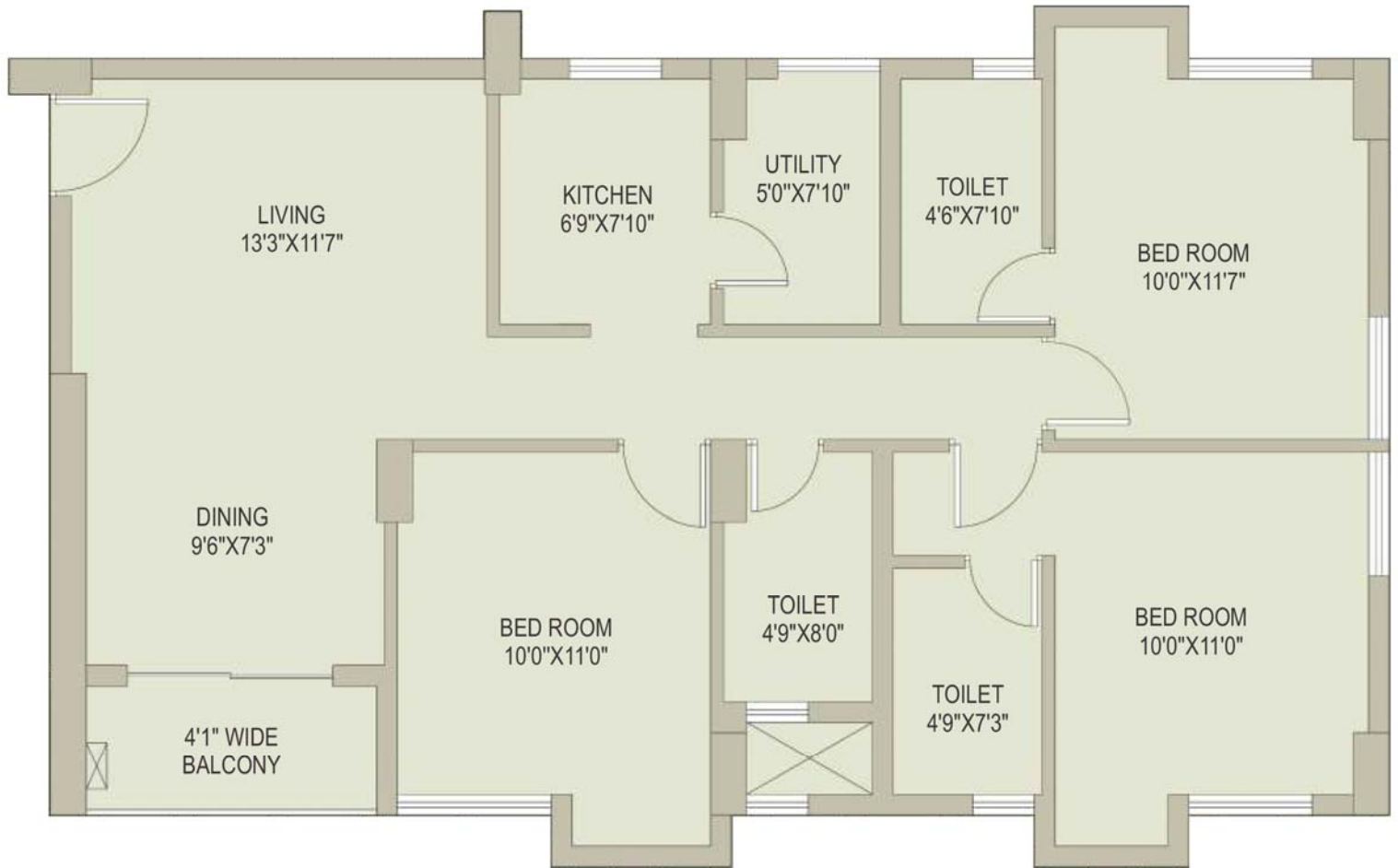




**Flat- B (3 BHK)**



**Flat- C (3 BHK)**



Flat- D (3 BHK)



Developer





Unimark Group



12-A, Lord Sinha Road, Shyamkunj Appt.

Flat # 403, Kolkata 700071 WB

 +91 81004 44477

 [sales@rabcoestates.com](mailto:sales@rabcoestates.com)