



Amenities

Godrej Properties plans to create world class amenities & facilities to benefit the life style of the residents of Godrej Garden City. We have tied up with Global Indian International School, Singapore (GIIS) for education from Nursery to the 12th Grade. The school is affiliated to CBSE

and will also promote extracurricular activities by housing over 1 acre of playgrounds and a National Size swimming pool. Godrej Garden City also plans to set up a multi speciality hospital & has recently launched its convenient Retail Scheme "City Square" for the benefit of its residents. The township will also have facilities like Rain Water Harvesting, 24x7 running water, a Power Sub Station, a Sewage Treatment Plant to name but a few.

Specifications

Belvedere & Pinecrest Tower

- ❖ **Flooring:-**
 - Living/Dining/Bedrooms-** Vitrified tiles 3' x 3'
 - Passages-** Vitrified tiles 3' x 3'
 - Entrance Lobby-** Vitrified tiles 3' x 3'
 - Balcony-** Vitrified tiles

- ❖ **Wall Finishing**
 - External-** Acrylic Emulsion paint
 - Internal-** Putty finish
 - Lift lobby-** ABD for stilt floor & OBD for upper floors

- ❖ **Lift**
 - Two no. of Elevators in each Tower

- ❖ **Kitchen**
 - Flooring-** Vitrified Tiles
 - Wall finishes-** Putty finish
 - Fittings-** Vinod Stainless Steel Sink with drainboard
 - Dado-** Glazed Ceramic tile upto 2 feet above granite counter
 - Modular Kitchen-** Below the counter, shutters only
 - Service Counter-** Granite Service Counter
 - Others-** Plumbing & Electrical point for water purifier & washing machine, Electrical point for Exhaust Fan

- ❖ **Doors**
 - Frame-** Teak Wood for main door/ Red Meranti for other doors
 - Main door-** Flush door with Teak composed veneer on outside & painted finish on inside
 - Internal doors-** Flush door with enamel paint on both side

- ❖ **Windows**
 - All rooms-** UPVC sliding windows

- ❖ **Toilets**
 - Flooring-** Anti Skid Ceramic Tiles
 - Dado-** Glazed Ceramic tile up to 7 feet
 - Fittings in Master bedroom toilet-** Wall Mounted WC, Italian Marble Counter sunk washbasin, Three in one wall mixer, Health faucet
 - Fittings in other toilets-** Wall Mounted WC, Bracket Mounted washbasin, Health faucet
 - Others-** Electrical & Plumbing Provision for Geyser

- ❖ **Electricals**
 - Concealed copper wiring, Modular type Switches , Miniature circuit breakers (MCBs & MCCBs), Telephone points in living room & master bedroom ,AC Points in each room, TV point in living room & Master Bedroom, Provision for video phone, Provision of Internet in Master bedroom, other bedroom and study room

- ❖ **Power back-up**
 - DG back-up for lifts and common areas in building

Orchard, Eden and Tivoli Towers

- ❖ **Flooring**
 - Living/Dining/Bedrooms-** Vitrified tiles 2' x 2'
 - Passages-** Vitrified tiles 2' x 2'
 - Entrance Lobby-** Vitrified tiles 2' x 2'
 - Balcony-** Ceramic Tiles

- ❖ **Wall Finishing**
 - External-** Acrylic Emulsion paint
 - Internal-** Putty finish
 - Lift lobby-** ABD for stilt floor & OBD for upper floors

- ❖ **Lift**
 - Minimum 2 Lifts in each tower

❖ **Kitchen**

Flooring- Ceramic Tiles

Wall finishes- Putty finish

Kitchen Counter- Granite Counter

Fittings- Stainless Steel Sink

Dado- Glazed Ceramic tile upto 2 feet above granite counter

Service Counter- Granite Service Counter

Others- Plumbing & Electrical point for water purifier & washing machine, Electrical point for Exhaust Fan

❖ **Doors**

Frame- Teak Wood for main door/ Red Meranti for other doors

Main door- Flush door with Teak composed veneer on outside & painted finish on inside

Internal doors- Flush door with enamel paint on both side

❖ **Windows**

All rooms- UPVC sliding windows

❖ **Toilets**

Flooring- Anti skid ceramic Tiles

Dado- Glazed ceramic tile up to 7 feet

Fittings- Wall Mounted WC, Granite counter sunk wash basin for master bedroom toilet, Bracket mounted wash basin for other toilets, Two in one Shower mixer, health faucet

Others- Electrical & Plumbing Provision for Geyser

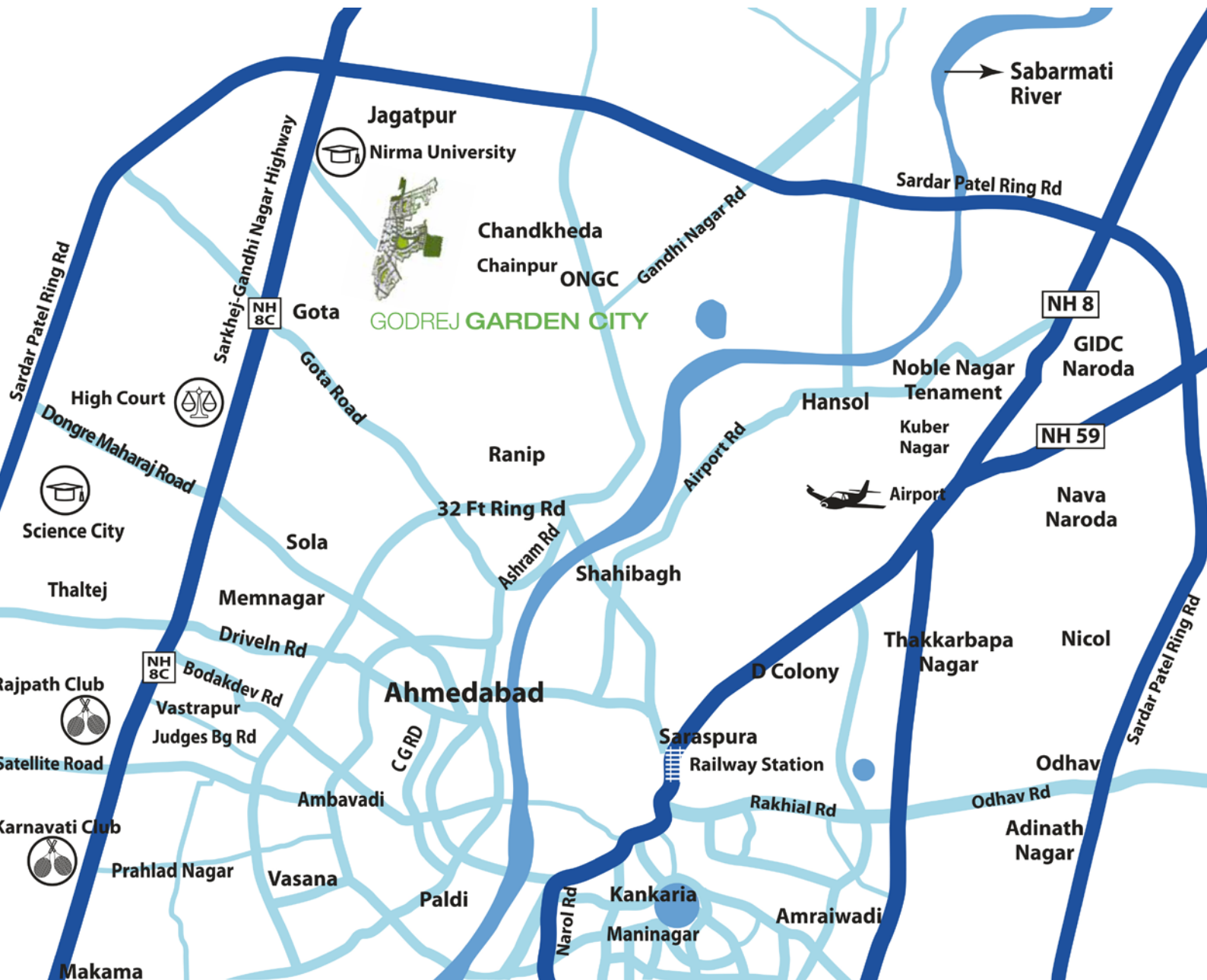
❖ **Electricals**

Concealed copper wiring, Modular type switches, AC points in Master bedroom and other bedroom, Miniature circuit breakers (MCBs), Telephone points in living room & master bedroom, TV point in living room, TV Point in Master Bedroom (2 & 3 BHK- Option II only), Provision for video phone (2 & 3 BHK- Option II only), Provision of Internet in Master Bedroom (2 & 3 BHK- Option II only)

❖ **Power back-up**

DG back-up for lifts and common areas in building

Location



Type & Area

Site Plan



Master Plan

MASTER PLAN TIVOLI, ORCHARD, EDEN & PINECREST

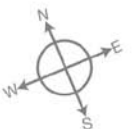


Belvedere
3 BHK (Tower- A,B,E)

3 BHK LUXURY – 2253 sq.ft.

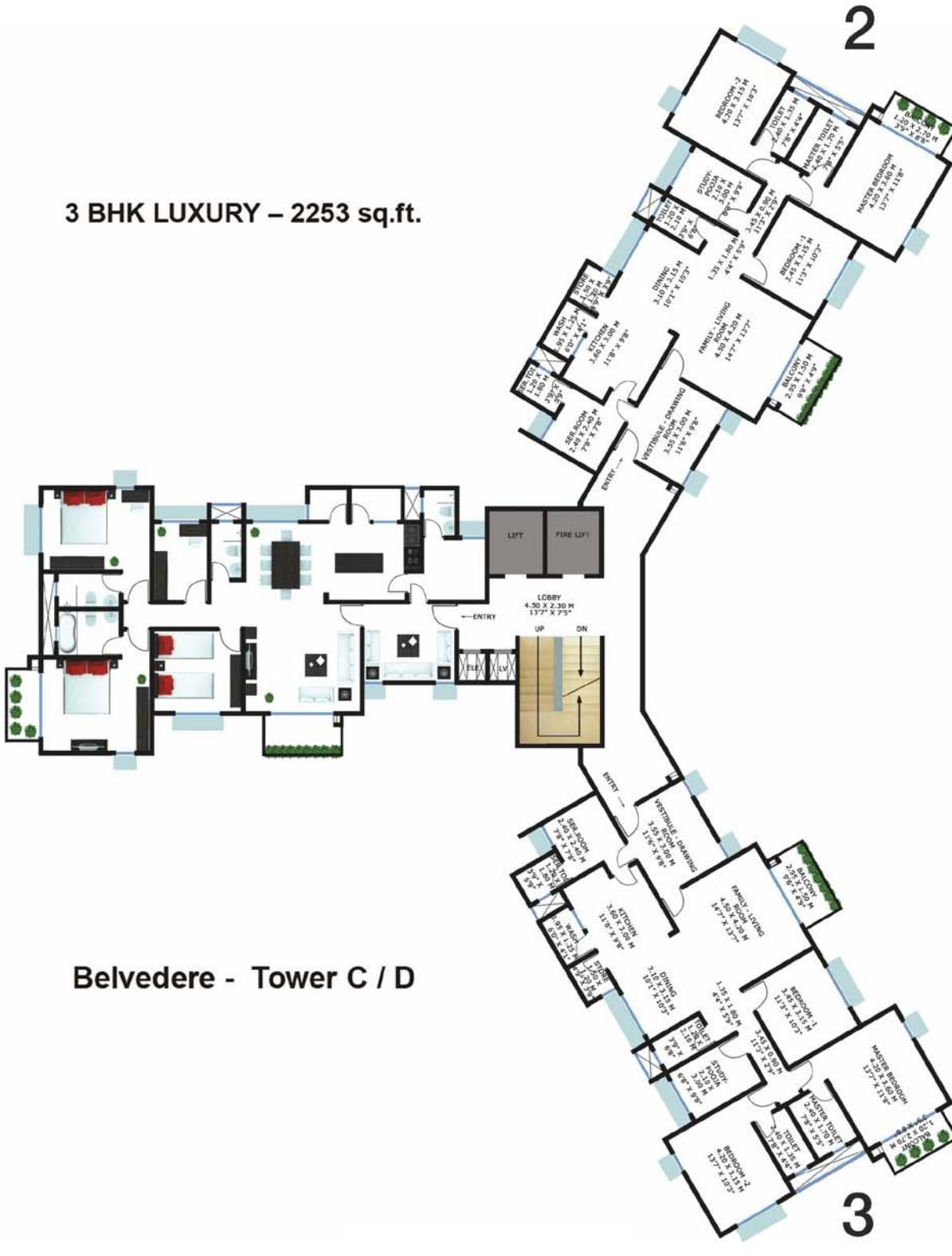


Belvedere - Tower A / B / E



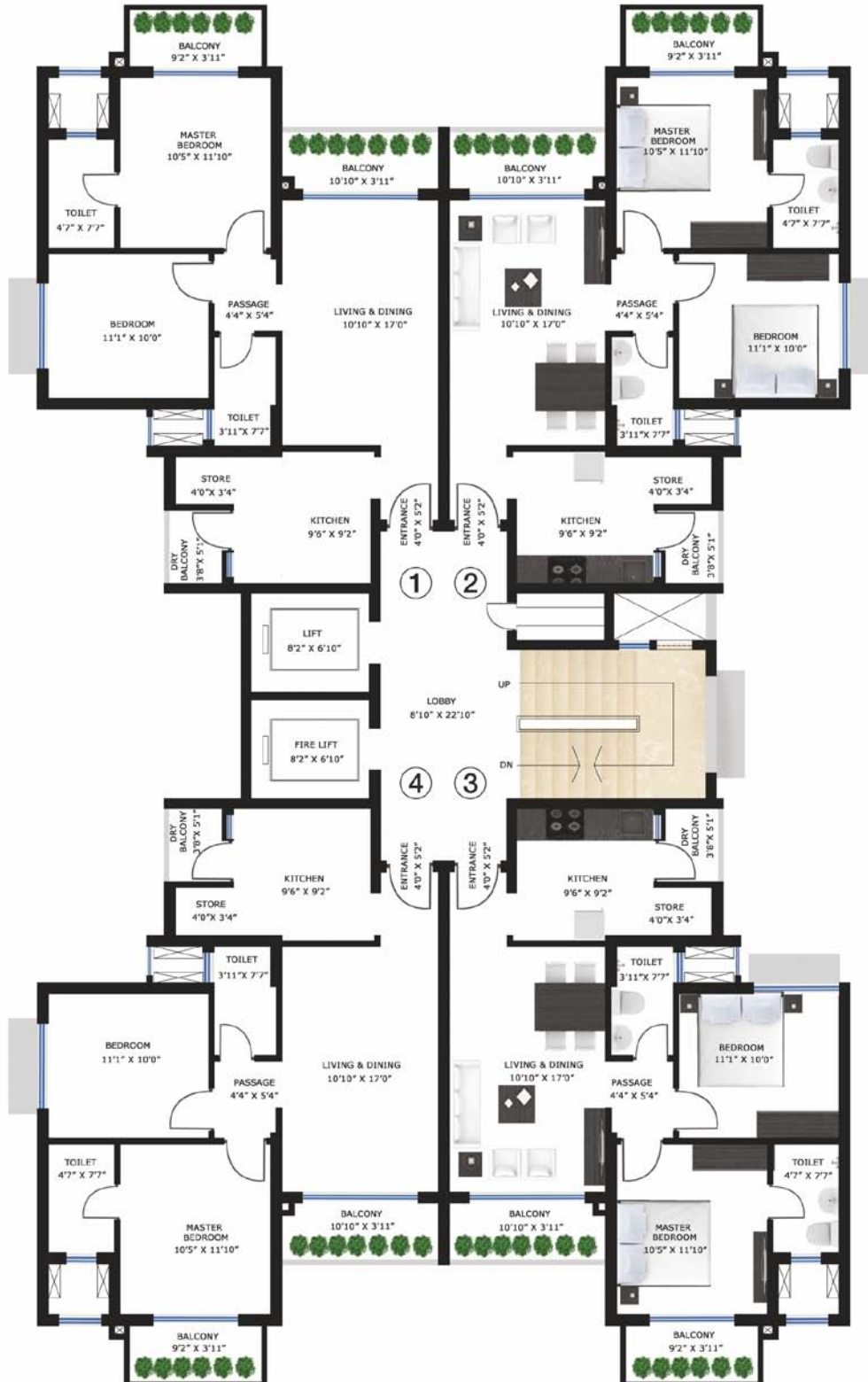
3 BHK (Tower- C,D)

3 BHK LUXURY – 2253 sq.ft.



Belvedere - Tower C / D

Carmel
2M Plan



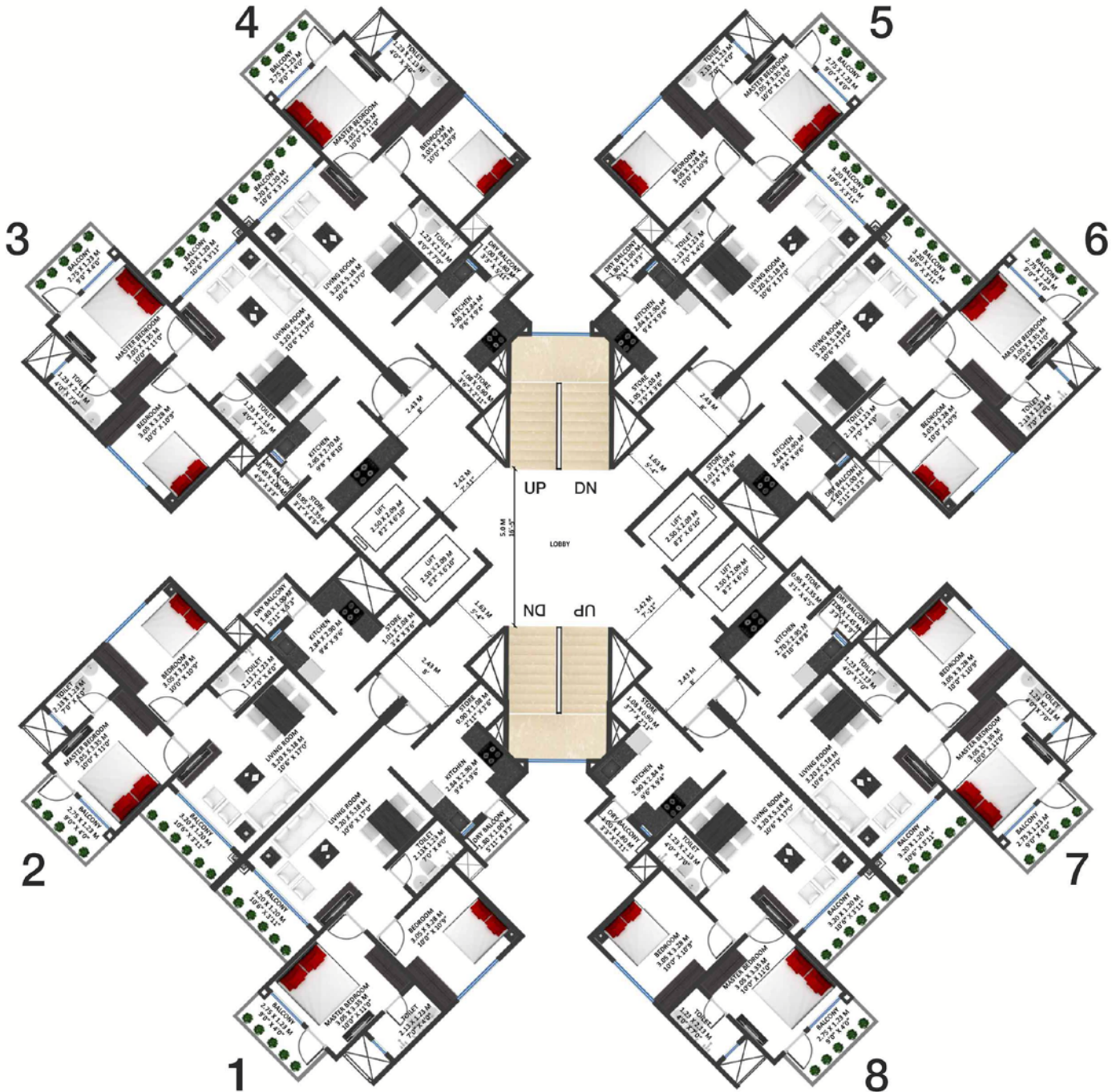
3M Plan



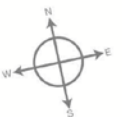
Eden

2 BHK (Tower- F,G,H,I,J & S,T,U,V,W,X)

2 BHK – 1100sq.ft.



Eden - Tower F / G / H / I / J
Tower S / T / U / V / W / X



3 BHK (Tower- K,L,M,N,O,P,Q,R)



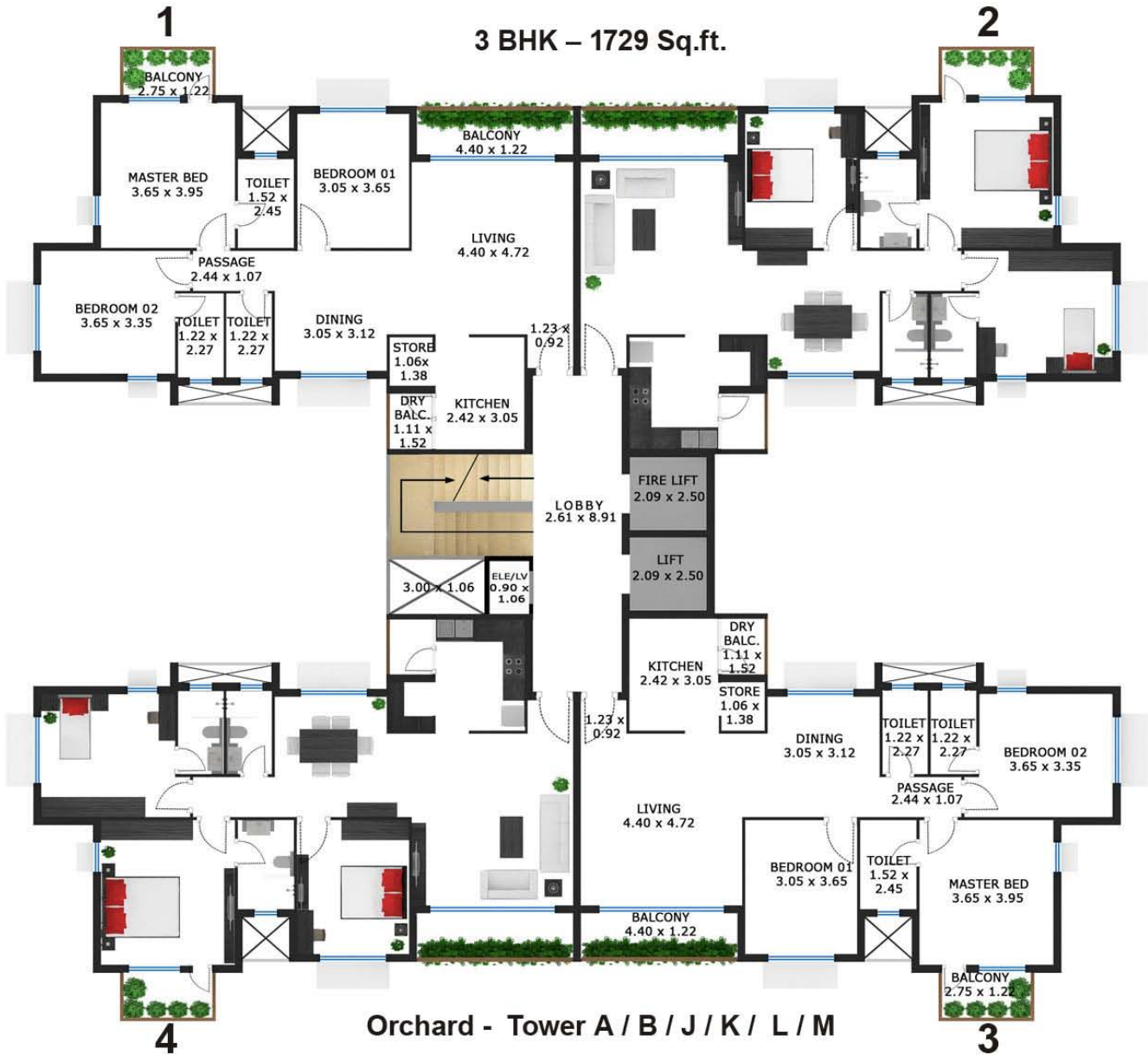
Orchard
2 BHK

2 BHK – 1262 Sq.ft.



Orchard - Tower C / D / E / F / G / H / I

3 BHK



Pinecrest
Tower- A,B,C

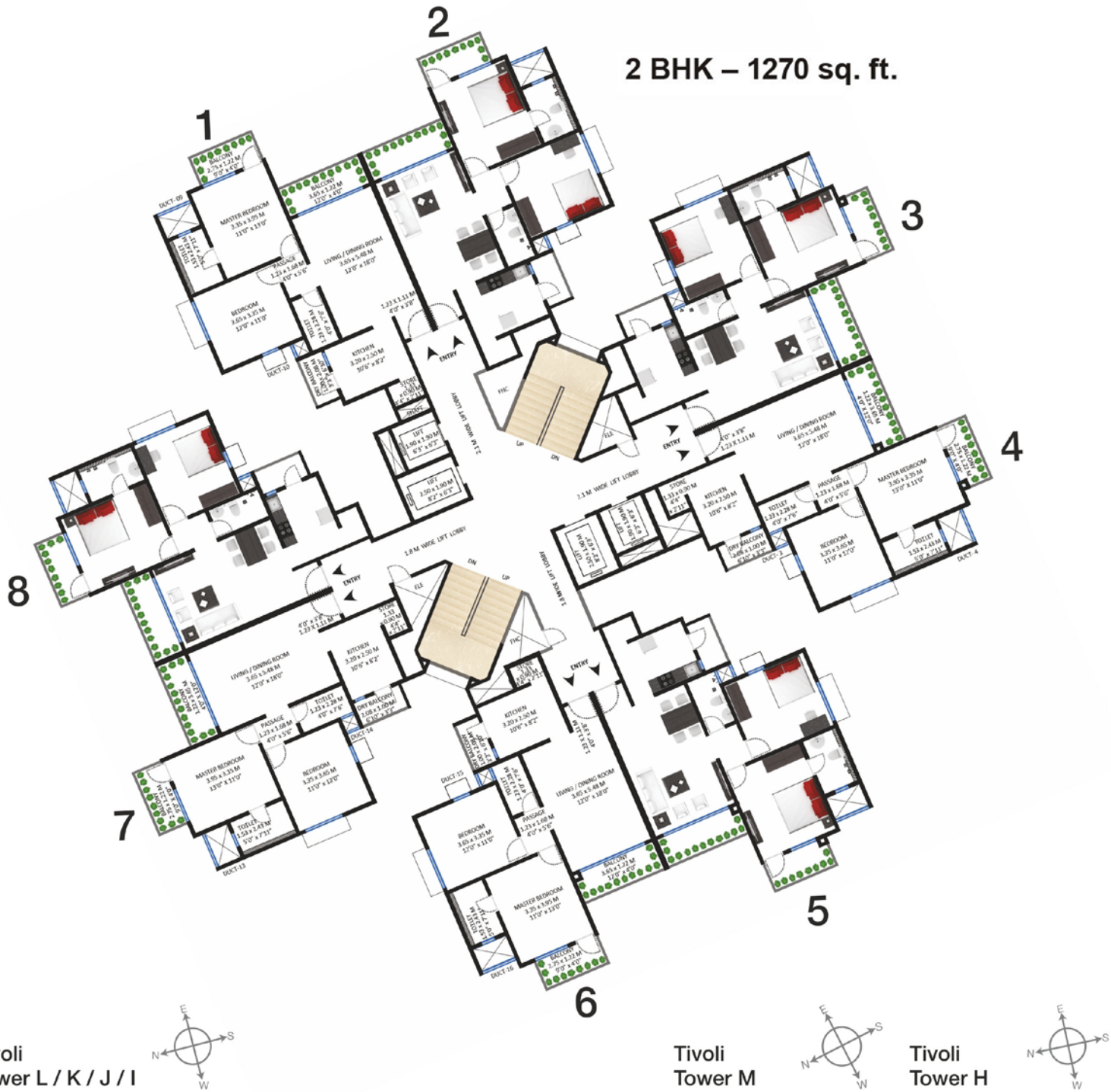
3 BHK with study - 2211 sq.ft.



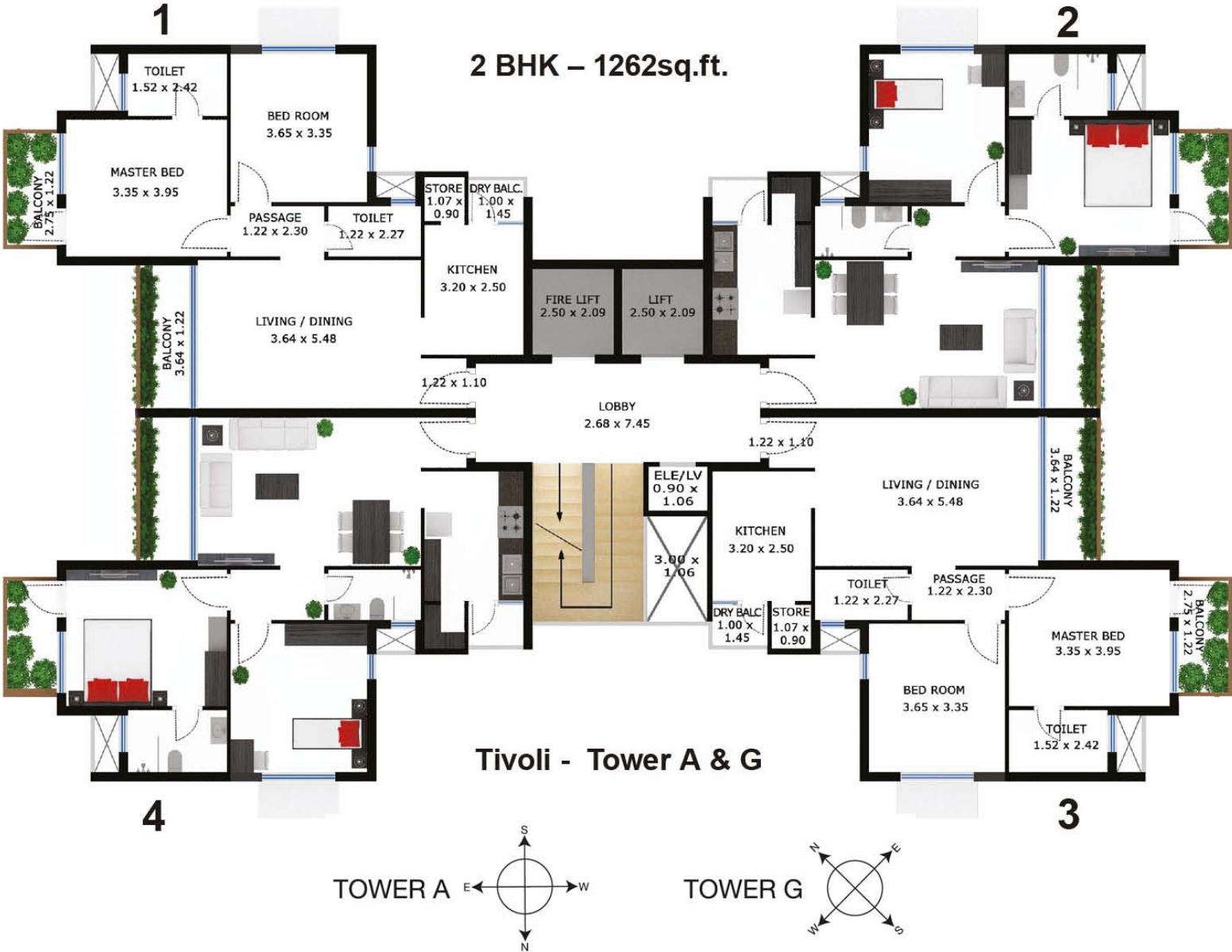
Pinecrest - Tower A / B / C



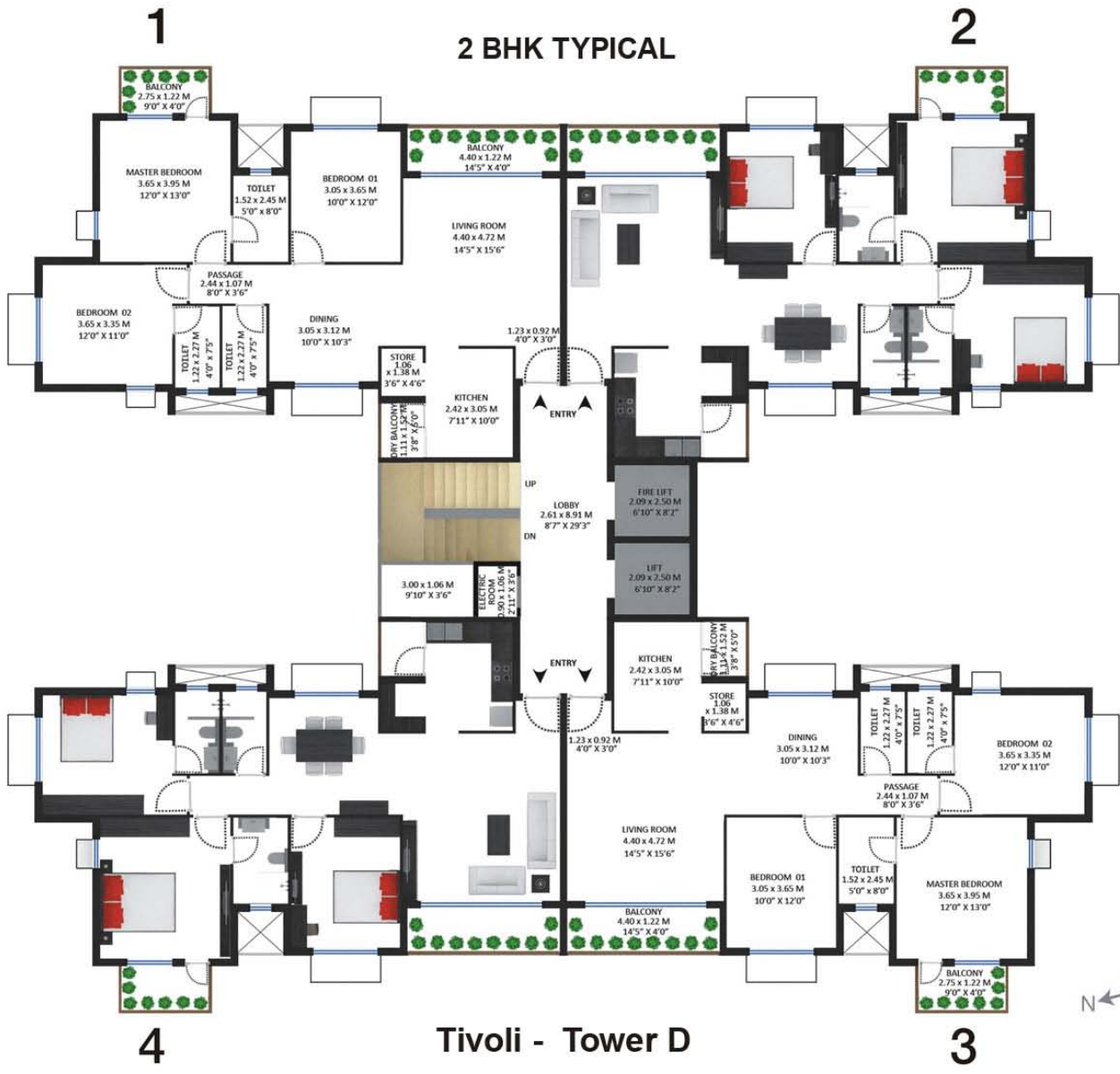
Tivoli
2 BHK (Tower- L,K,J,I)



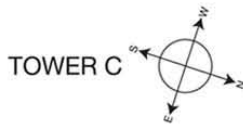
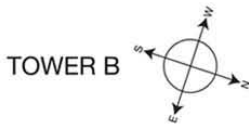
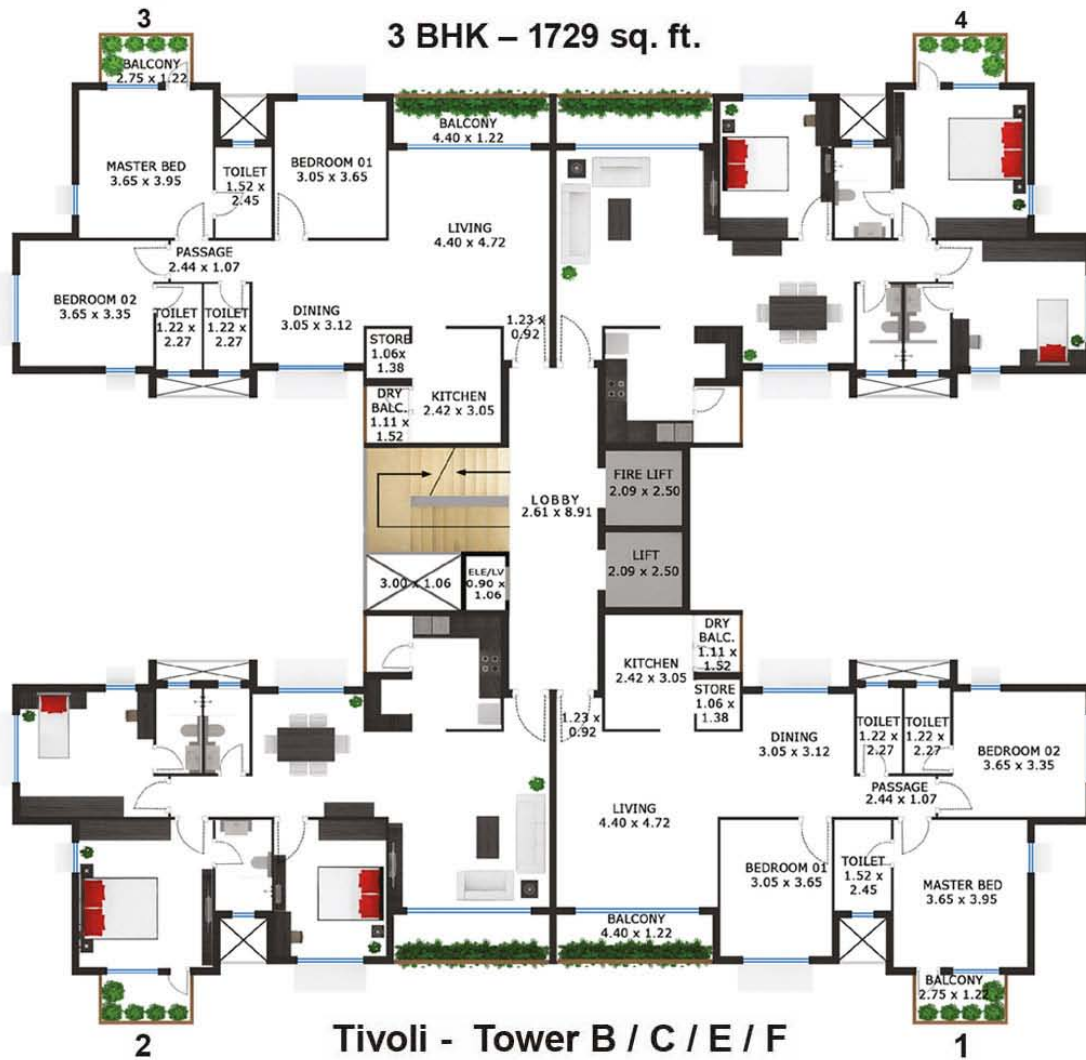
2 BHK (Tower- A & G)



3 BHK (Tower- D)



3 BHK (Tower- B,C,E,F)



Vrindavan Ground Floor Plan

1 BHK APARTMENT
GROUND FLOOR PLAN - A/D

1 BHK APARTMENT
GROUND FLOOR PLAN - B/E



Typical Floor Plan

1 BHK APARTMENT
TYPICAL FLOOR PLAN - A/D
1ST FLOOR - 12TH FLOOR

1 BHK APARTMENT
TYPICAL FLOOR PLAN - B/E
1ST FLOOR - 12TH FLOOR



Developer



Godrej Group


Architect


Skidmore, Owings & Merrill (SOM)



12-A, Lord Sinha Road, Shyamkunj Appt.

Flat # 403, Kolkata 700071 WB

 +91 81004 44477

 sales@rabcoestates.com