

GODREJ PLATINUM  
ALIPORE, KOLKATA

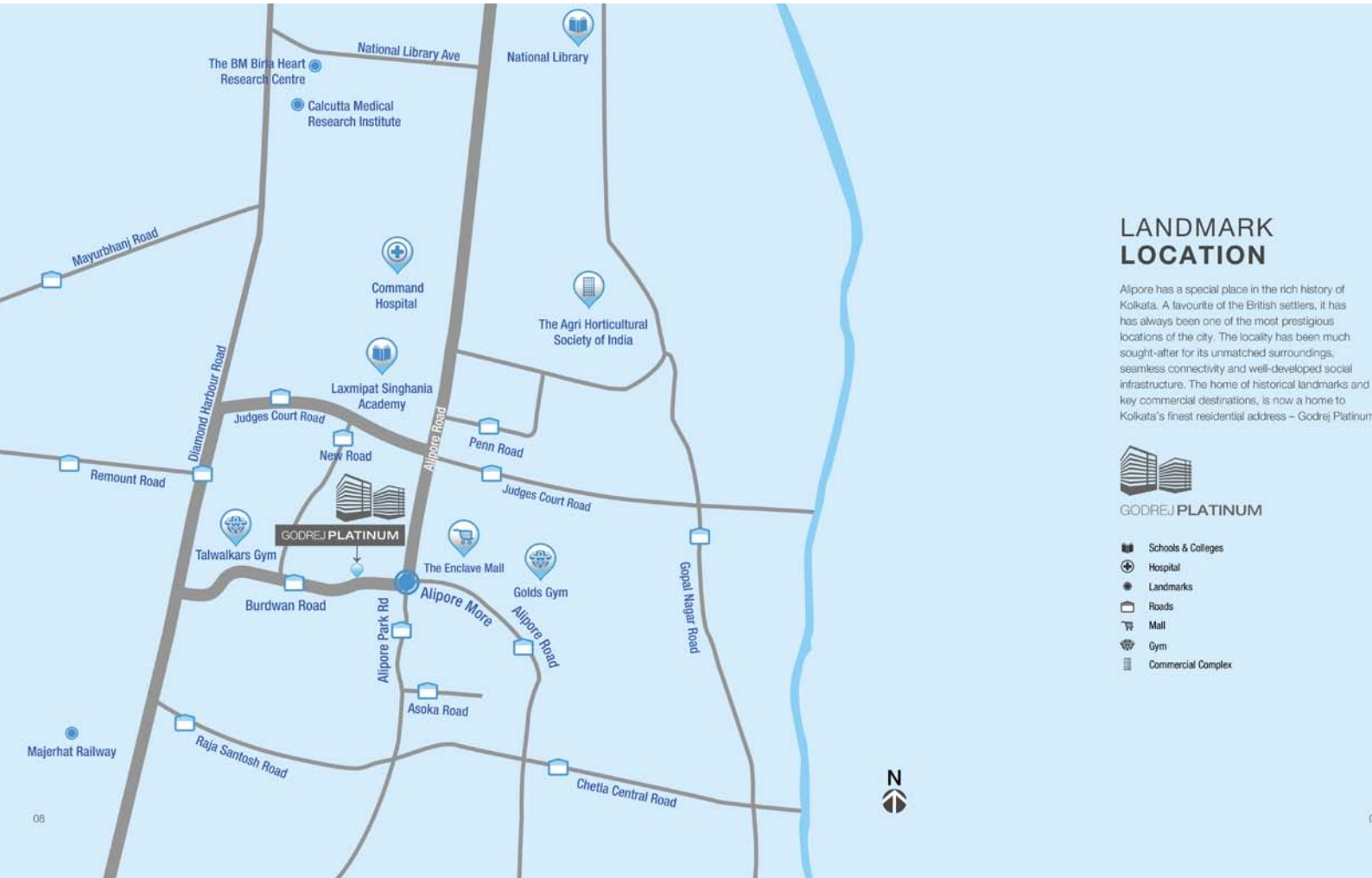


## Amenities

Living at Godrej Platinum is all about having leisure within your grasp. You can conveniently maintain an active lifestyle, while providing a safe haven for your children to grow up in.

- ❖ **Clubhouse:-** State-of-the-art recreational facilities to keep both your body and mind in shape.
- ❖ **Gym:-** A fully-equipped GYM to push your limits and keep your heart rate up.
- ❖ **Kid's Play Area:-** A safe indoor haven where your little ones can play, learn and grow without a care in the world.
- ❖ **Swimming Pool:-** A cool, refreshing reprieve from the hot and hectic world outside.
- ❖ **Banquet Hall:-** The perfect place to host a gathering and celebrate life's landmarks.
- ❖ **Indoor Games:-** Make the most of your free time with a host of exciting options to choose from.

## Location



### LANDMARK LOCATION

Alipore has a special place in the rich history of Kolkata. A favourite of the British settlers, it has always been one of the most prestigious locations of the city. The locality has been much sought-after for its unmatched surroundings, seamless connectivity and well-developed social infrastructure. The home of historical landmarks and key commercial destinations, is now a home to Kolkata's finest residential address – Godrej Platinum.



GODREJ PLATINUM

- Schools & Colleges
- Hospital
- Landmarks
- Roads
- Mall
- Gym
- Commercial Complex

# Type & Area

## Master Plan

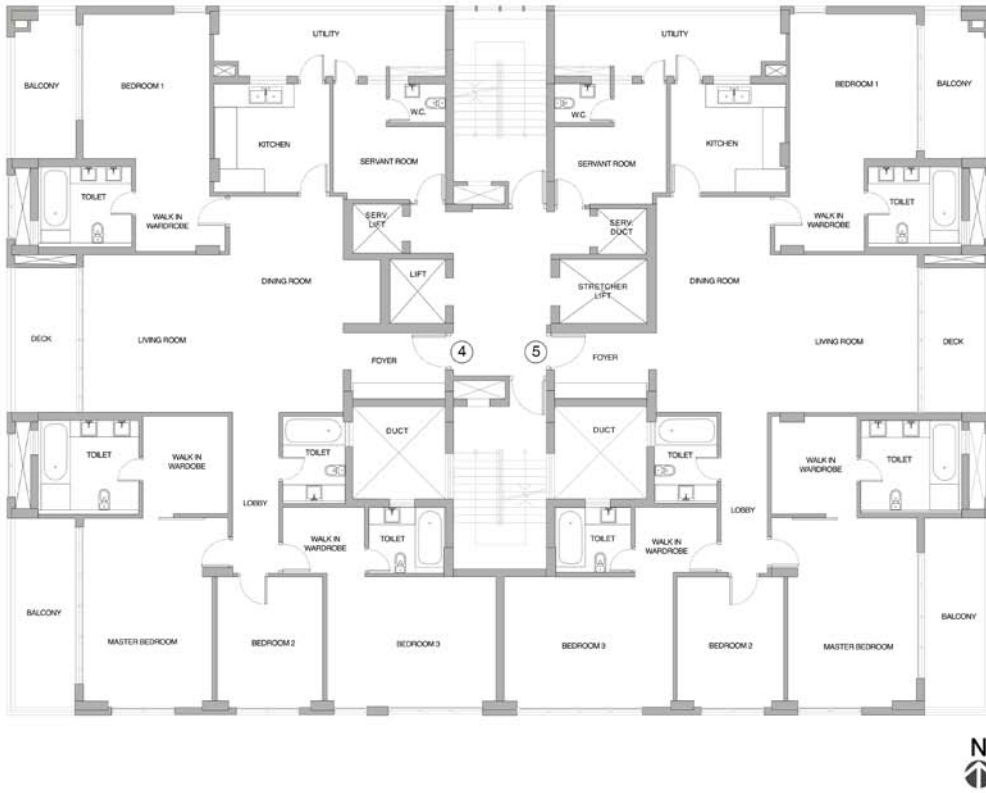


### MASTER PLAN

- GUARD HOUSE
- ENTRY PLAZA
- ENTRY GARDEN
- WATER GARDEN
- WATER FALL
- DROP-OFF AREA
- CENTRAL COURT
- CHILDREN'S PLAY LAWN
- FEATURE WATER PLAY
- CAR PARK
- SECOND FLOOR COURTYARD GARDEN
- SWIMMING POOL
- DRIVEWAY WITH GRASS PAVERS

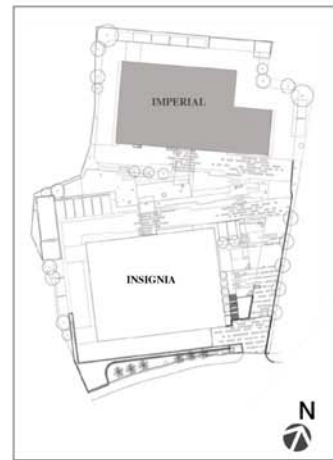


**Tower- Imperial  
Typical Floor Plan**



**FLOOR PLAN  
TOWER - IMPERIAL  
TYPICAL FLOOR PLAN**

Unit no.	Flat type	Area (sq.mtrs.)
04	4BHK	460.33
05	4BHK	460.33



Tower- Imperial  
Unit Plan- 1



**FLOOR PLAN**  
TOWER - IMPERIAL  
UNIT PLAN

Unit no.	Flat type	Area (sq.mtrs.)
04	4BHK	460.33



**Tower- Imperial  
Unit Plan- 2**

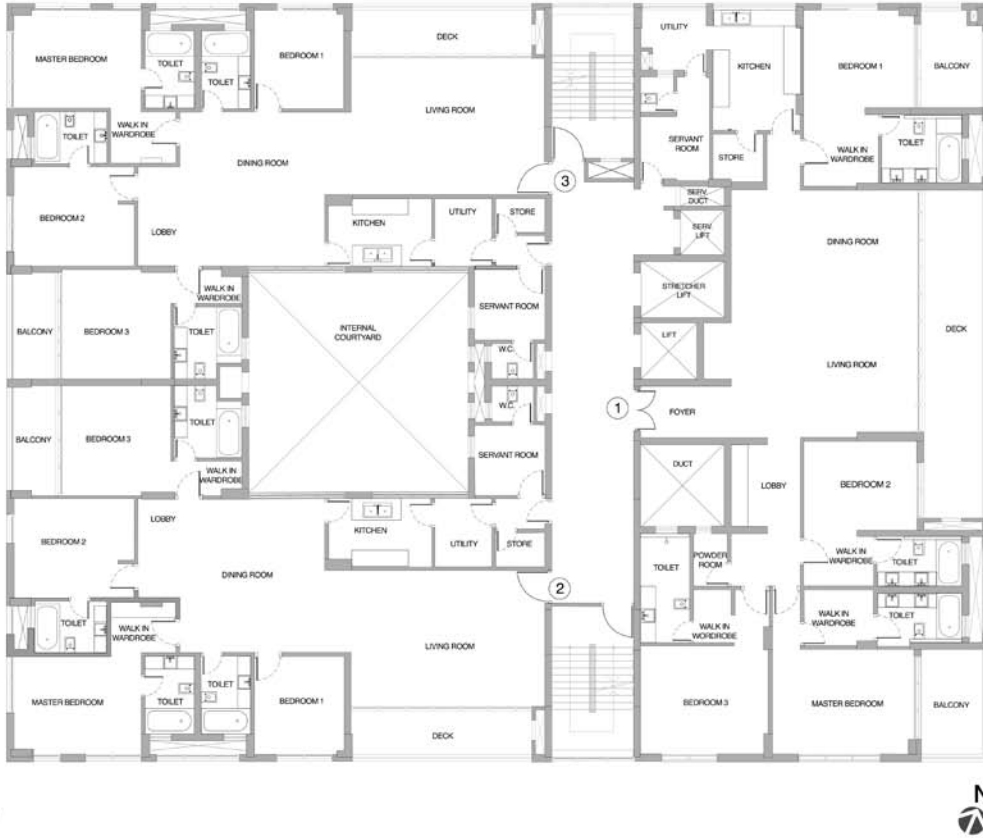


**FLOOR PLAN  
TOWER - IMPERIAL  
UNIT PLAN**

Unit no.	Flat type	Area (sq.mtrs.)
05	4BHK	460.33

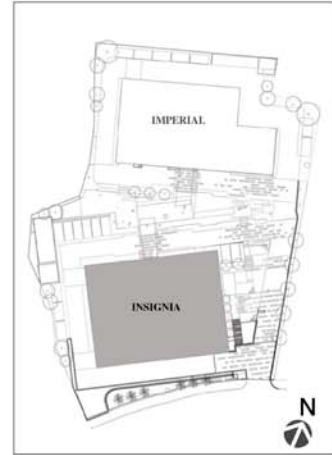


**Tower- Insignia  
Typical Floor Plan**



**FLOOR PLAN  
TOWER - INSIGNIA  
TYPICAL FLOOR PLAN**

Unit no.	Flat type	Area (sq.mtrs.)
01	4BHK	471.48
02	4BHK	349.50
03	4BHK	349.50

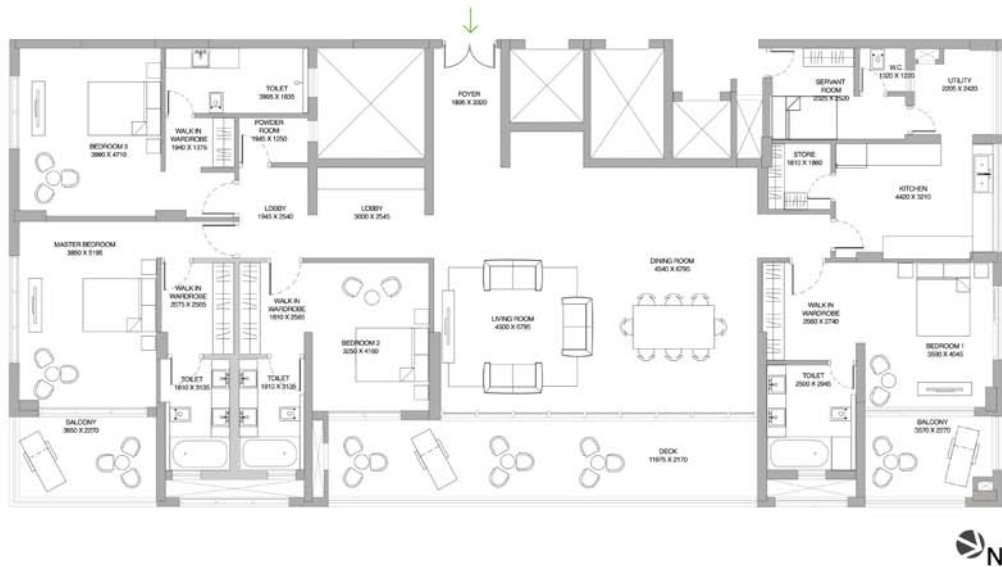




**Tower- Insignia  
Unite Plan- 1**

**FLOOR PLAN  
TOWER - INSIGNIA  
UNIT PLAN**

Unit no.	Flat type	Area (sq.mtrs.)
01	4BHK	471.48



**Tower- Insignia  
Unite Plan- 2**



**FLOOR PLAN  
TOWER - INSIGNIA  
UNIT PLAN**

Unit no.	Flat type	Area (sq.mtrs.)
02	4BHK	349.50



Tower- Insignia  
Unite Plan- 3



**FLOOR PLAN**  
TOWER - INSIGNIA  
UNIT PLAN

Unit no.	Flat type	Area (sq.mtrs.)
03	4BHK	349.50




Developer



12-A, Lord Sinha Road, Shyamkunj Appt.

Flat # 403, Kolkata 700071 WB

 +91 81004 44477



[sales@rabcoestates.com](mailto:sales@rabcoestates.com)