



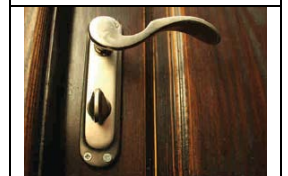
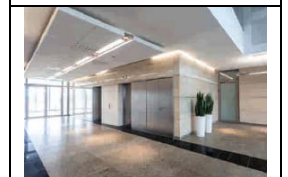
## Amenities

- ❖ Food & Dining
- ❖ Shopping
- ❖ Education
- ❖ Health Care
- ❖ Community Hall
- ❖ CCTV
- ❖ Hassle Free Car Parking
- ❖ Modern Elevators
- ❖ Fire Fighting
- ❖ Intercom
- ❖ Security



## Specifications

- ❖ **Bedrooms:-**  
**Flooring-** Vitrified tiles  
**Wall & Ceiling-** POP finish
- ❖ **Living & Dining:-**  
**Flooring-** Vitrified tiles  
**Wall & Ceiling-** POP finish
- ❖ **Kitchen:-**  
**Flooring-** Anti-skid ceramic tiles  
**Wall & Ceiling-** Ceramic tiles up to two feet above counter level, POP finish  
**Counter-** Granite countertop  
**Fittings & Fixtures-** Stainless steel sink and provision exhaust  
**CP Fittings-** Jaguar or equivalent
- ❖ **Living & Dining:-**  
**Flooring-** Vitrified tiles  
**Wall & Ceiling-** POP finish
- ❖ **Toilets:-**  
**Flooring-** Anti-skid ceramic tiles  
**Wall & Ceiling-** Designer ceramic tiles up to door height, POP finish  
**Sanitary ware-** Parry ware/Hind ware or equivalent  
**Counter-** Granite countertop  
**CP Fittings-** Jaguar or equivalent



❖ **Doors & Windows:-**

**Main entrance door-** Decorative flush door with lock

**Internal doors-** Flush doors painted on both sides

**Windows-** Powder coated aluminum or UPVC windows with clear glass



❖ **Common Area:-**

**Main entrance lobby-** Exquisitely designed with Marble/Granite/Tiles

**Floor lobbies-** Vitrified tiles

**Stairwell-** Kota Stone

**Elevators-** Automatic elevators of Otis/Kone/Schindler or equivalent make



❖ **Electrical:-**

Concealed copper wiring and MCB in each apartment

Switches- Modular of reputed brand

AC points in living room and all bedrooms

24x7 power back up for common areas



❖ **Safety & Security:-**

Intercom system

24x7 CCTV surveillance systems for common areas

Modern fire fighting and alarm system as per government regulations



## Location



## Type & Area

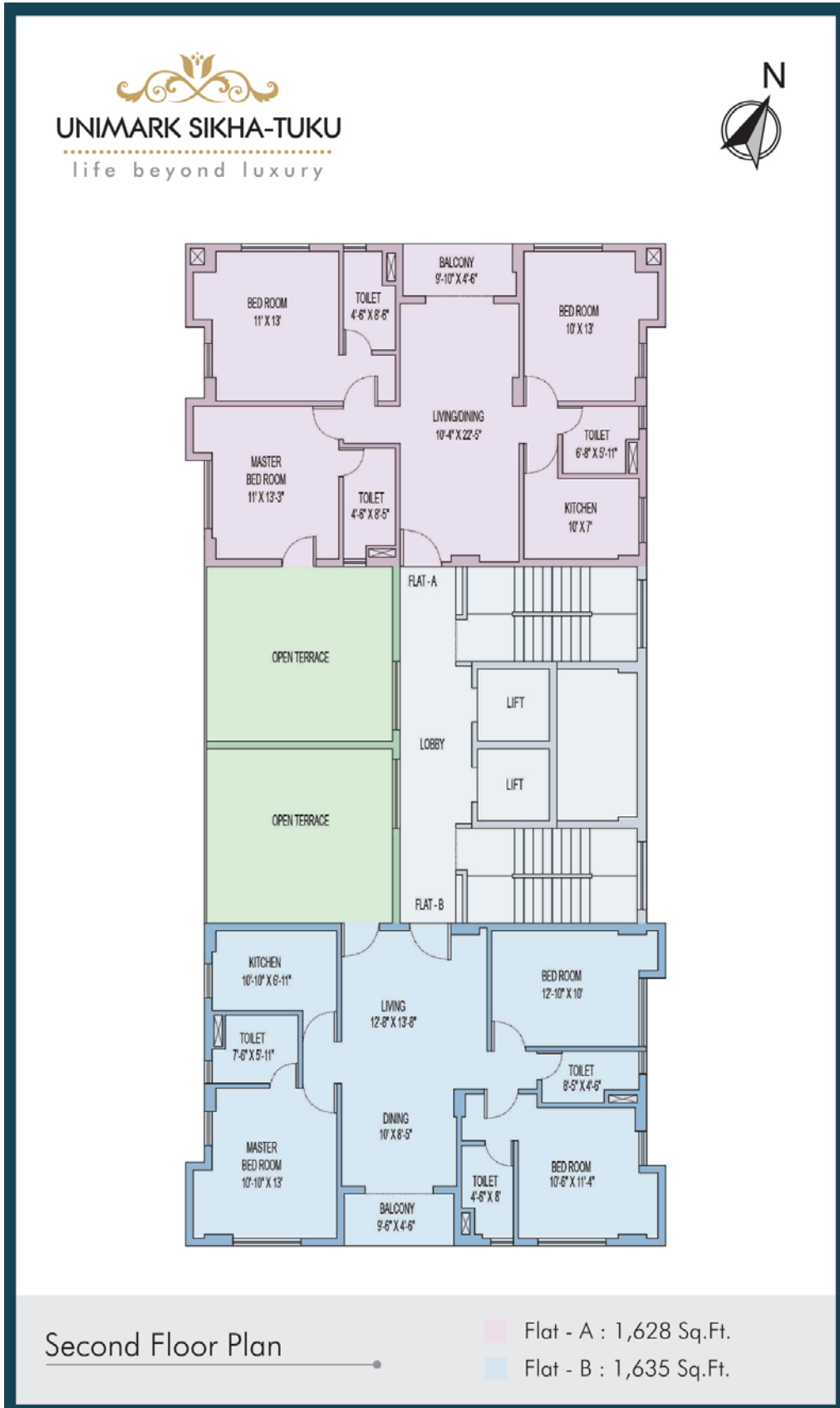
### Ground Floor Plan



1st Floor Plan

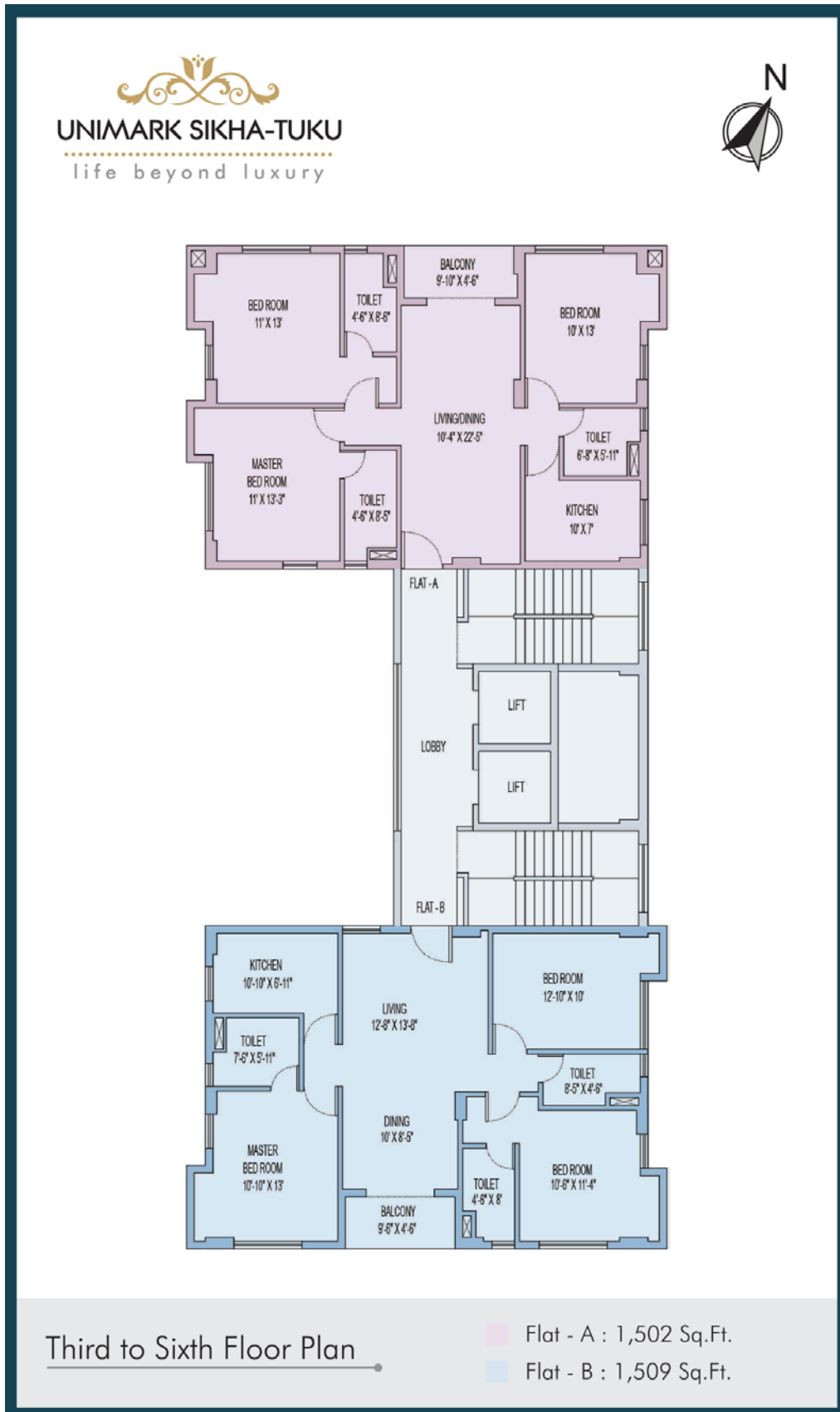


2nd Floor Plan

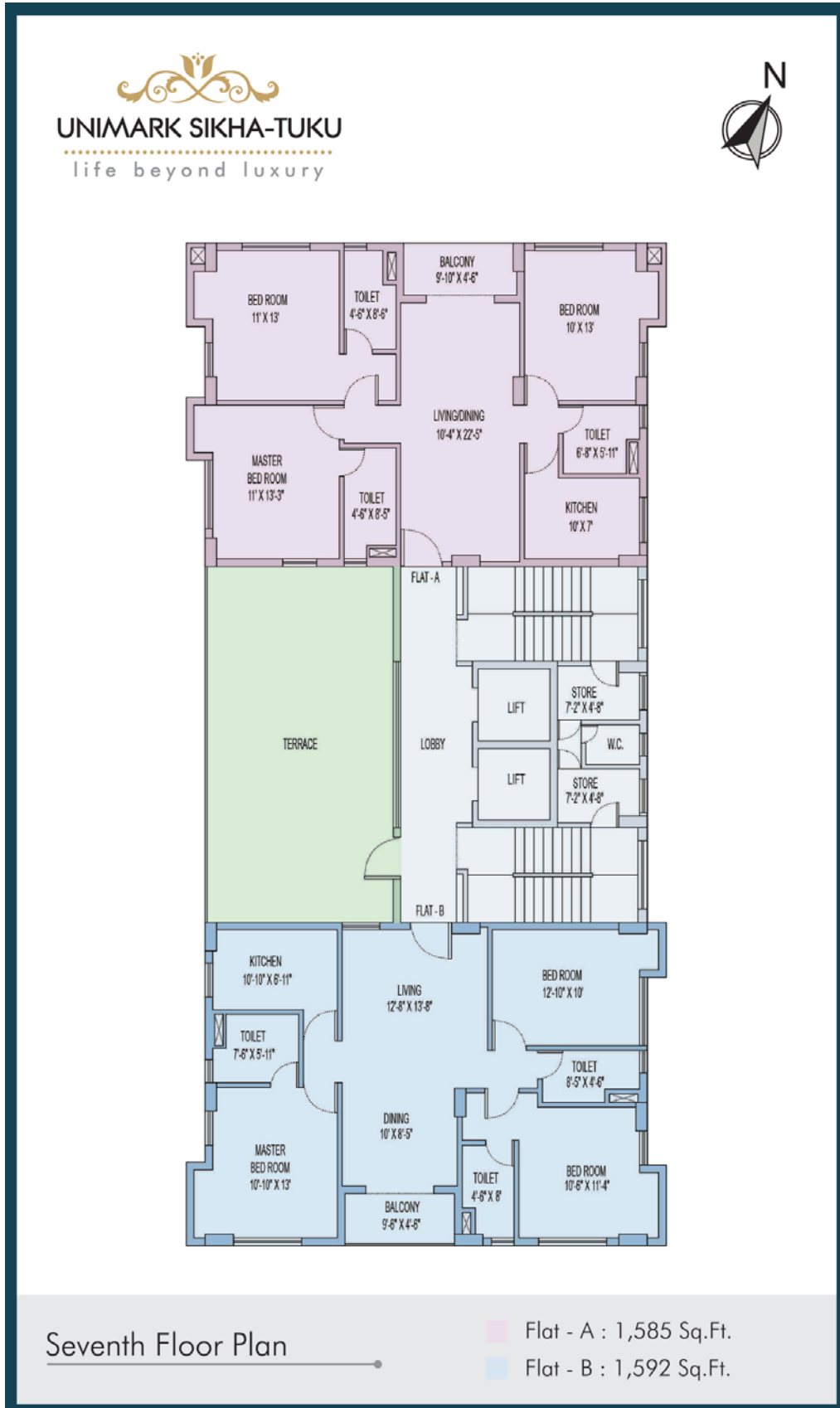




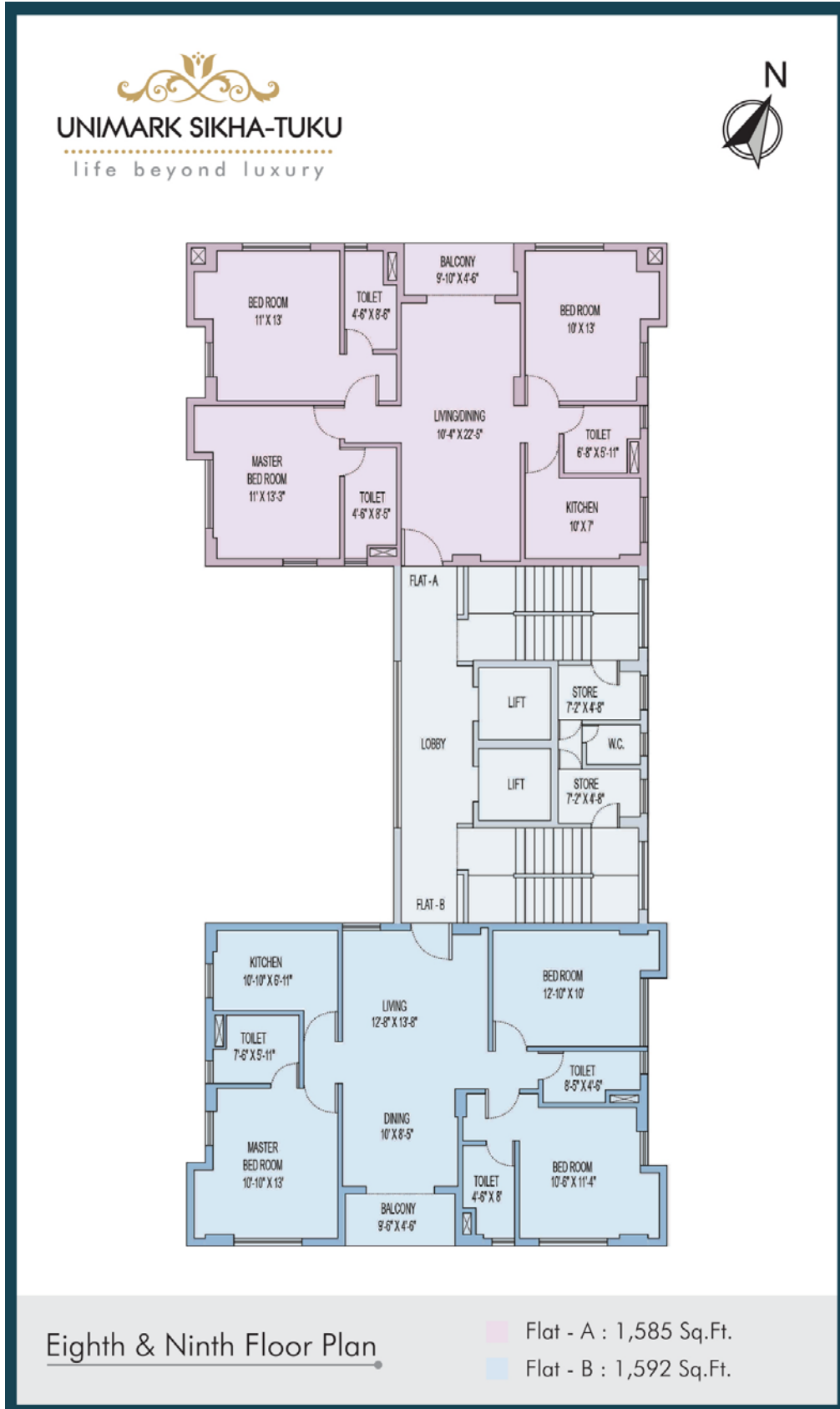
3rd to 6th Floor Plan



7th Floor Plan



8th & 9th Floor Plan



Developer



12-A, Lord Sinha Road, Shyamkunj Appt.  
Flat # 403, Kolkata 700071 WB

+91 81004 44477



[sales@rabcoestates.com](mailto:sales@rabcoestates.com)