



Amenities

- ❖ **Embark Point:-** Well Decorated Lobby
- ❖ **Pine grove Park:-** Landscaped Green Areas and Children's Play Area
- ❖ **Global Village:-** Residents' Club
- ❖ **Pine Apple:-** Cyber Café
- ❖ **Lily Pool:-** Swimming Pool
- ❖ **Take Care:-** Health Club
- ❖ **Powerhouse:-** Gymnasium
- ❖ **Bookery:-** Library
- ❖ **Cones & Needles:-** Air-conditioned Banquet Hall connected with the Lawn
- ❖ **Gambit:-** Indoor and Outdoor games

Residents at both Siddha Pines and Siddha Pine Woods enjoy these common amenities and facilities

Facilities

State-of-the-art Fire Fighting System

Intercom Network

Cable TV and Broadband

Sewage Treatment Plant

Power Backup—Generators *

Water Filtration Plant

24 Hours' Water Supply

Elevators

Dedicated Provisions Store

Fully Fitted

Bathroom

Mirror
Towel Rack
Storage Unit
Soap Holder
Shower Curtain
Geyser
Door Mat
Exhaust Fan

Kitchen

Modular Kitchen
Hob & Chimney
Water Purifier
Microwave
Exhaust Fan

Air-conditioning in all Bed rooms along with living and dining area.

Living Room

Sofa set
Centre table
Side tables
Rug
Air conditioning



Dining Area

Dining table
Chairs
Cabinet

Kitchen

Modular kitchen with granite counter & steel sink with drainboard
Hob & chimney
Water purifier
Microwave
Refrigerator
Exhaust fan

Bedroom

Bed
Side tables
Dressing unit
Study unit in 1 bedroom
Curtains
Air conditioning
Rug
Modular wardrobes

Bathroom

Mirror
Towel rack
Storage unit
Soap holder
Rug
Shower curtain
Geyser
Door mat
Exhaust fan

Electronic & Others

TV with unit
Washing machine
Curtains
Light fittings
Fans
Painted walls
Shoe rack

All furniture and furnishing items are subject to availability of requisite space in the apartment. In the event of space constraints for any above mentioned item/items, Siddha reserves the right to remove/not provide such item/items in the apartment.

Specifications

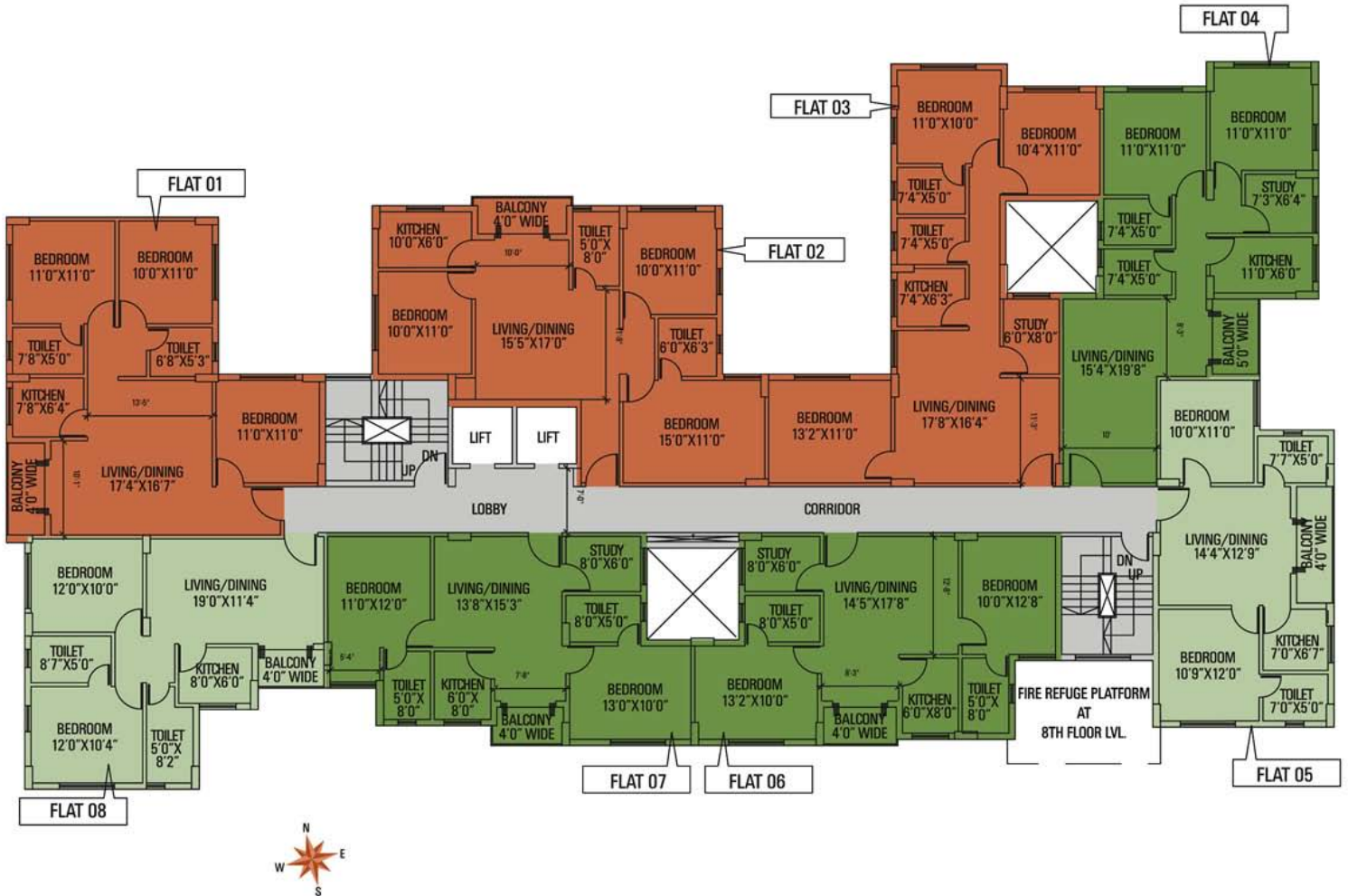
- ❖ **Structure:-**
Earthquake resistant RCC framed construction with infill brick walls.
- ❖ **Internal walls:-**
Cement plastering overlaid with smooth, impervious plaster-of-paris.
- ❖ **Kitchen:-**
Floors: Ceramic tiles.
Dados: Ceramic tiles up to a height of 2 feet from the counter top.
- ❖ **Windows:-**
Aluminium frames with fully glazed shutters and superior quality fittings.
- ❖ **Flooring:-**
Vitrified tile/laminated wood flooring in all bedrooms, living/dining room and common areas.
- ❖ **Doors:-**
Doors with tough timber frames and solid-core flush shutters.
- ❖ **Bathroom:-**
Floors: Ceramic tiles.
Dados: Ceramic tiles upto a height of 7 feet.
- ❖ **Sanitary ware:-**
White, high quality porcelain equipment and chromium-plated fittings. Geyser points in all bathrooms.
- ❖ **Exterior:-**
Latest weatherproof non-fading exterior finish of the highest quality
- ❖ **Telephone wiring & broadband:-**
Central distribution console. Networked with all apartments.
Broadband point.
- ❖ **Electricals:-**
Superior quality concealed copper wiring with the latest modular switches, miniature

Location



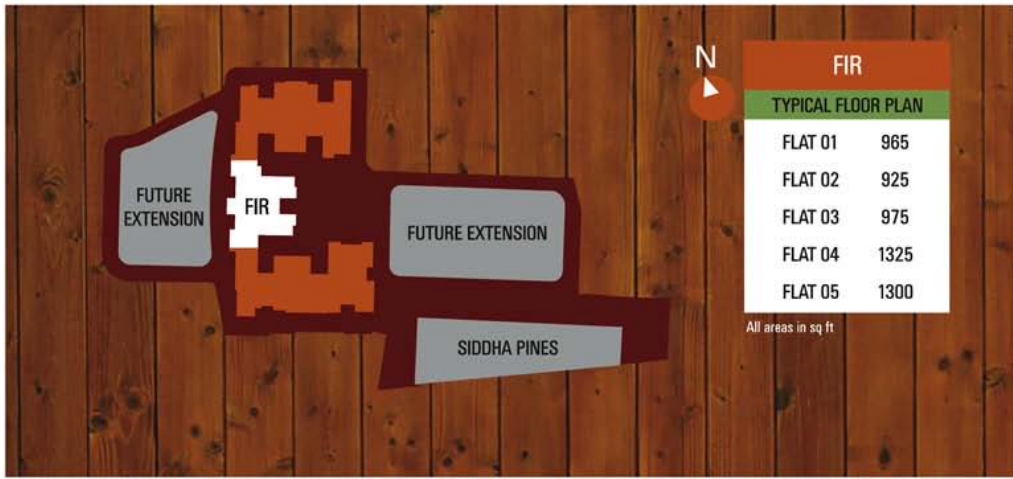
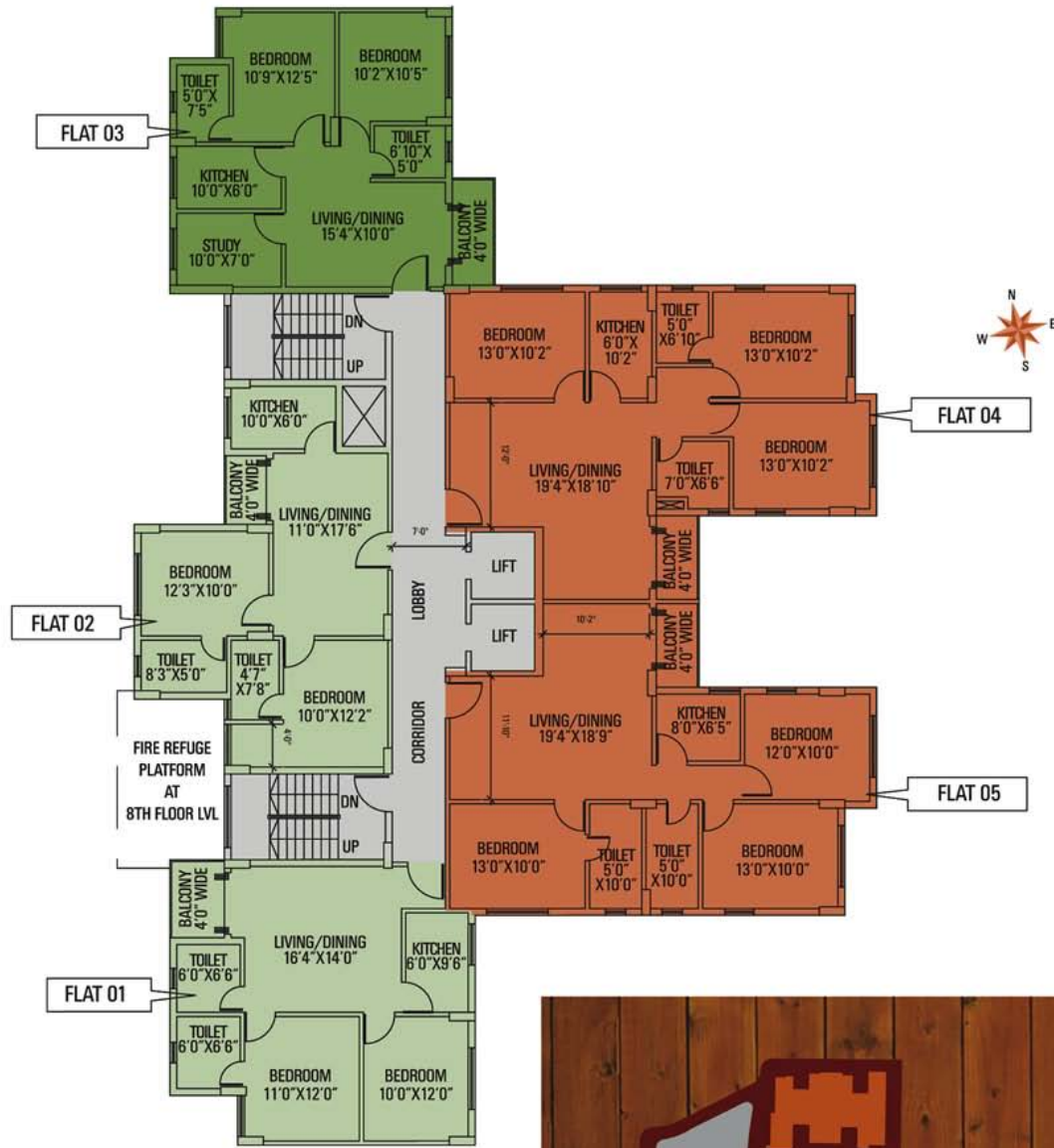
Type & Area

ELM



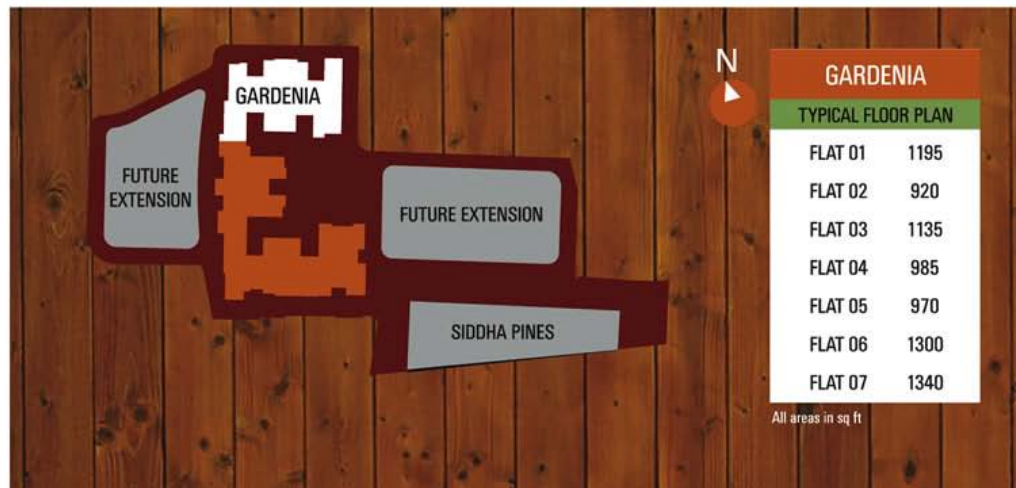
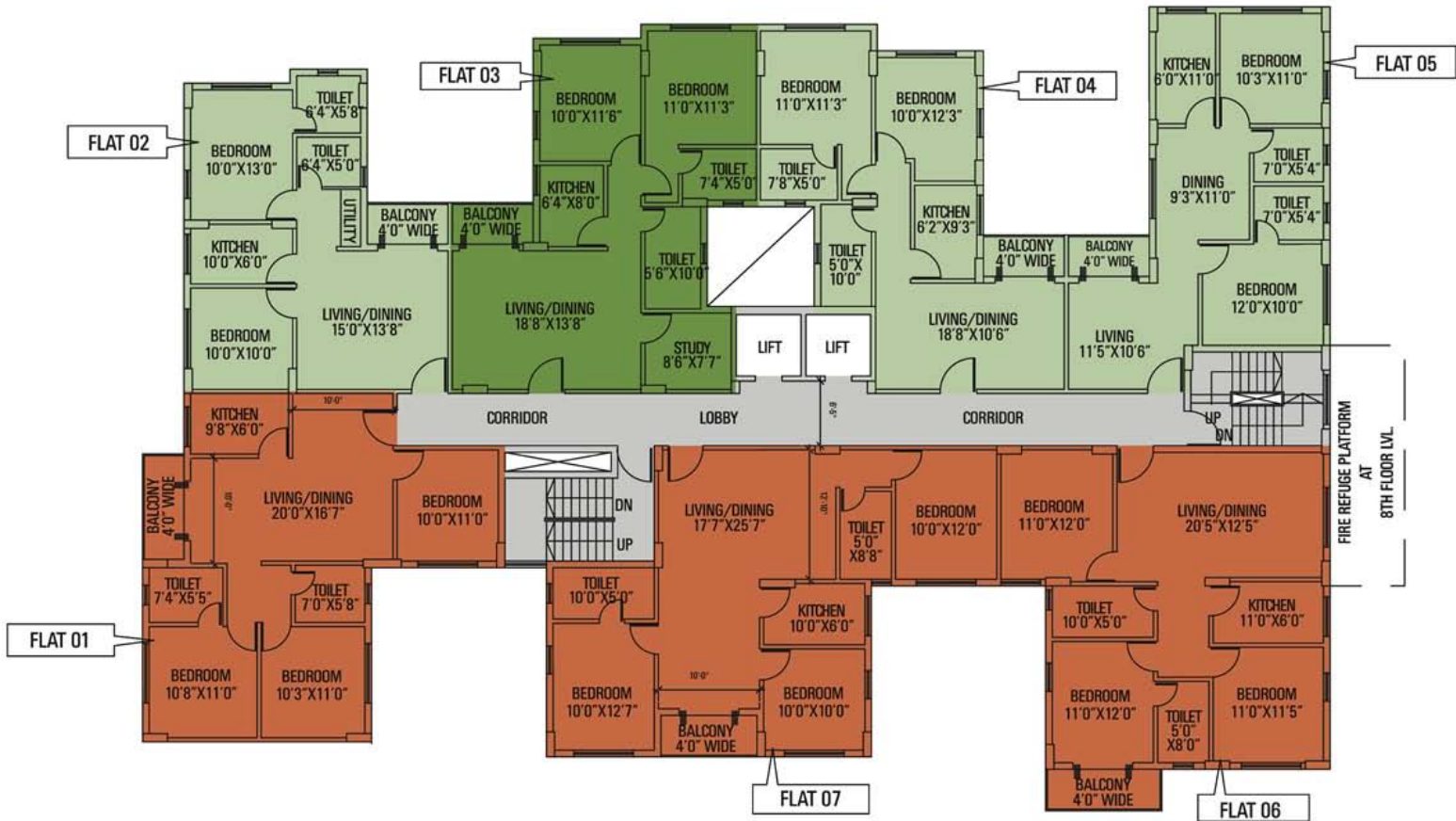
- 3BHK
- 2BHK + STUDY
- 2BHK

FIR



- 3BHK
- 2BHK + STUDY
- 2BHK

GARDENIA



- 3BHK
- 2BHK + STUDY
- 2BHK

Developer



Siddha Group



12-A, Lord Sinha Road, Shyamkunj Appt.

Flat # 403, Kolkata 700071 WB

+91 81004 44477



sales@rabcoestates.com