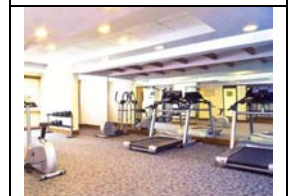




## Amenities

- ❖ **Exclusive Location:-** Strategically located in New Town, Greenwood Elements is just 5 minutes from Haldiram- VIP road and just 10 minutes away from NSCB airport.
- ❖ **AC Apartments:-** Every apartment in Greenwood Elements is air conditioned so you can breeze through the sultry Kolkata summers without breaking a sweat.
- ❖ **Three Sides Open:-** To maximize airflow and sunlight, most apartment are open on three sides.
- ❖ **Swimming Pool:-** Wash away the day's stress and get in shape while you are at it by taking a dip in the large swimming pool.
- ❖ **Kids' Pool:-** Let your kids splash around safely in the smaller kids' pool while you go for a relaxing swim.
- ❖ **Exclusive Resident's Club:-** Whether you want to work up a sweat in the state-of-the-art gym, elevate your spirit in the yoga room or just hang out with your friends and family in the Arena lounge, the exclusive residents' club has it all.



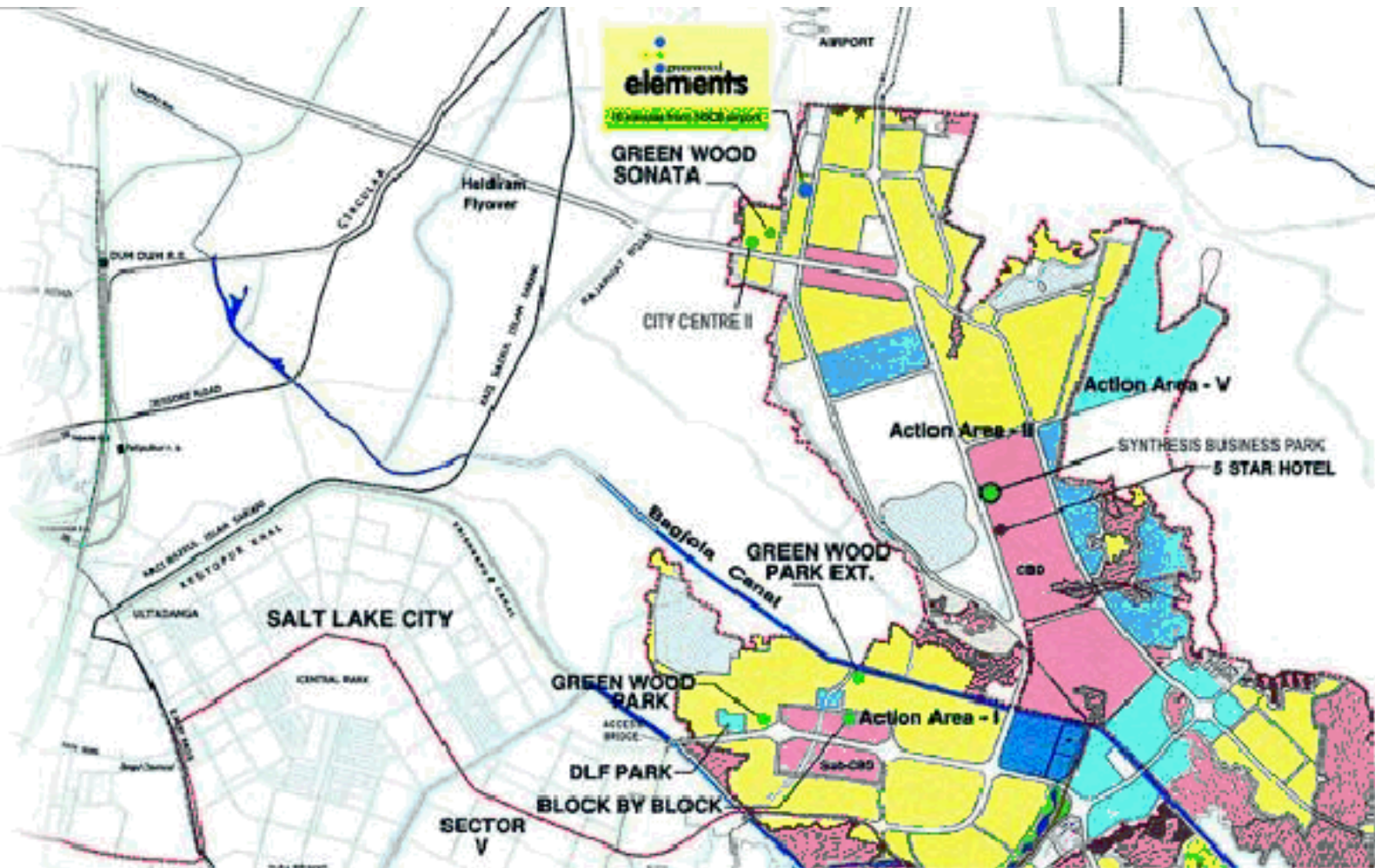
- ❖ **AC Community Hall:-** Be it a birthday, a marriage reception, or just a get-together, you can celebrate in style in the plush AC community hall.
- ❖ **Courtyards:-** The central courtyards are surrounded by clusters of trees and flower beds along with a patch of open greens for social gatherings.
- ❖ **Children's Play Area:-** Your kids are sure to have a whale of a time in the wide open children's play area, all in the comfort and safety of the complex.
- ❖ **Toddler's Play Room:-** There's something here for the little ones too. The toddler's play room will let your young ones make friends and learn social skills while having great fun.
- ❖ **Multiple Elevators in each Tower:-** Waiting for an elevator will no longer be a frustrating experience, as every tower is equipped with multiple elevators to help you save time.
- ❖ **Generator for Power Backup:-** The entire complex is equipped with full power backup, so that if there is a power cut, you don't have to lose a night's sleep over it.

## Standard Specifications

- ❖ **Foundation:-** Pile foundation
- ❖ **Superstructure:-** RCC framed structure
- ❖ **Bedrooms:-**  
**Floor:** Mirror finish vitrified tiles  
**Walls:** Plaster of paris, Acrylic paint
- ❖ **Living/Dining:-**  
**Floor:** Mirror finish vitrified tiles  
**Walls:** Plaster of paris, Acrylic paint
- ❖ **Kitchen:-**  
**Floors/Backsplash:** Ceramic tiles  
**Counter:** Granite  
**Walls:** Plaster of paris with Acrylic paint  
**Sink:** Stainless steel sink  
**Cabinet:** Modular type with chimney
- ❖ **Toilet:-**  
**Floors:** Ceramic tiles/glass mosaic  
**WC:** Branded EWC with cistern  
**Wash Basin:** Porcelain  
**Fittings:** Branded CP fittings with hot & cold mixing arrangement in shower only
- ❖ **Door:-** Decorative doors
- ❖ **Windows:-** UPVC
- ❖ **External Finish:-** Weather coat paint over plaster
- ❖ **Electrical:-** Concealed copper wiring and modular switches
- ❖ **Lift:-** Branded lift
- ❖ **Staircase:-** Tiled staircase
- ❖ **Other Facilities:-** Telephone & cable TV wiring. Provision for generator backup at extra cost Air conditioned bedrooms & living-dining.

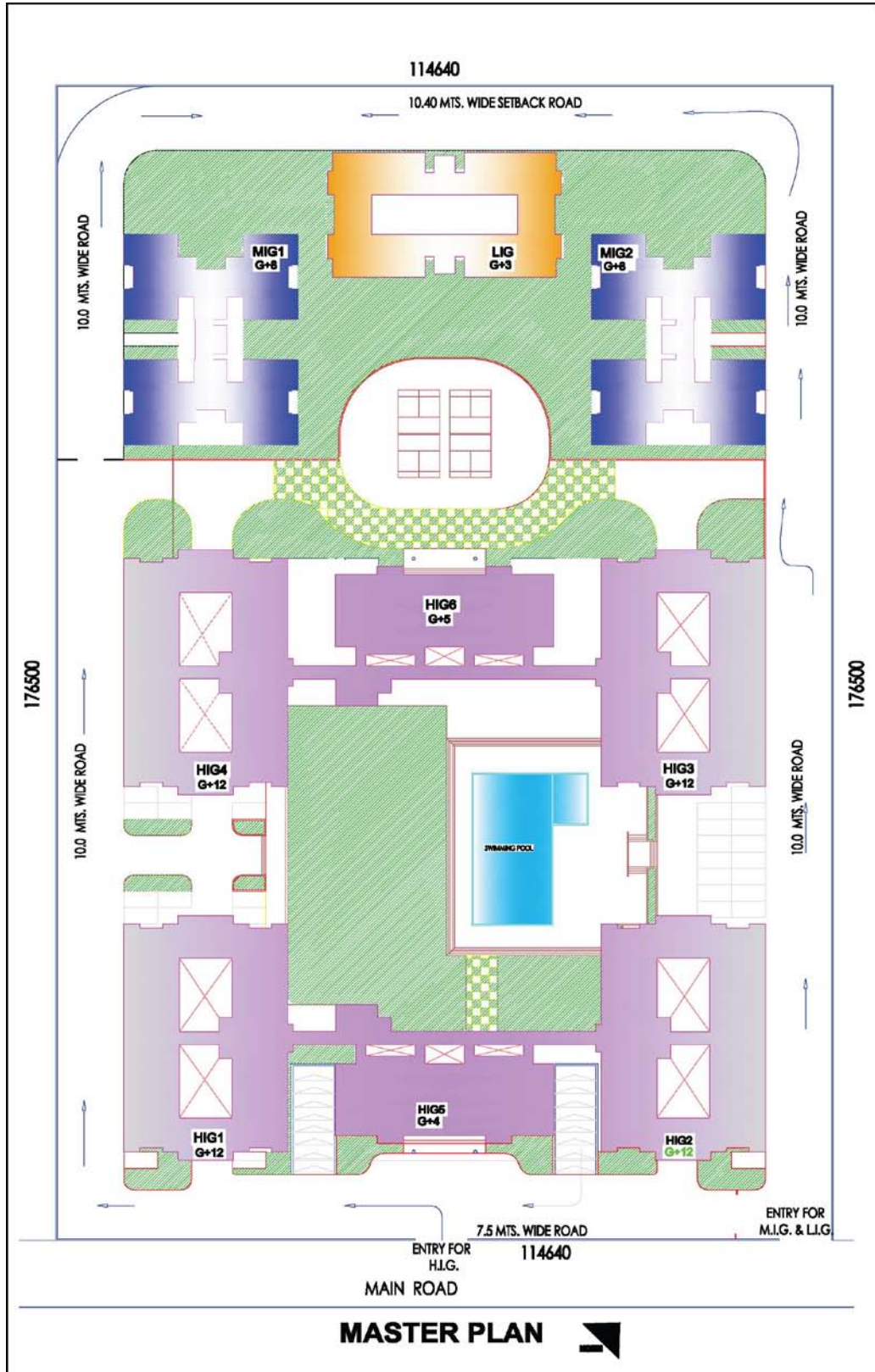


## Location



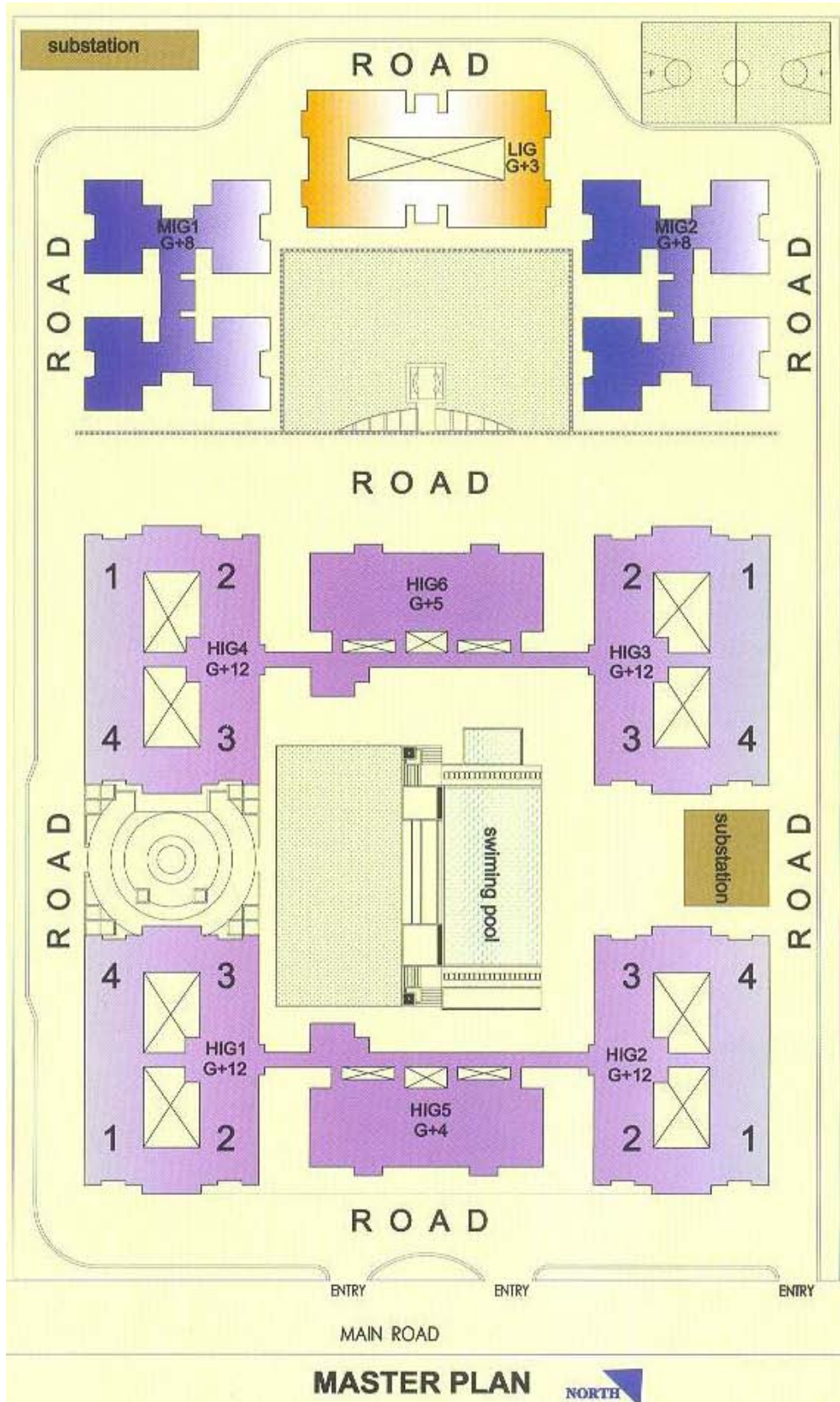
# Type & Area

## Site Plan

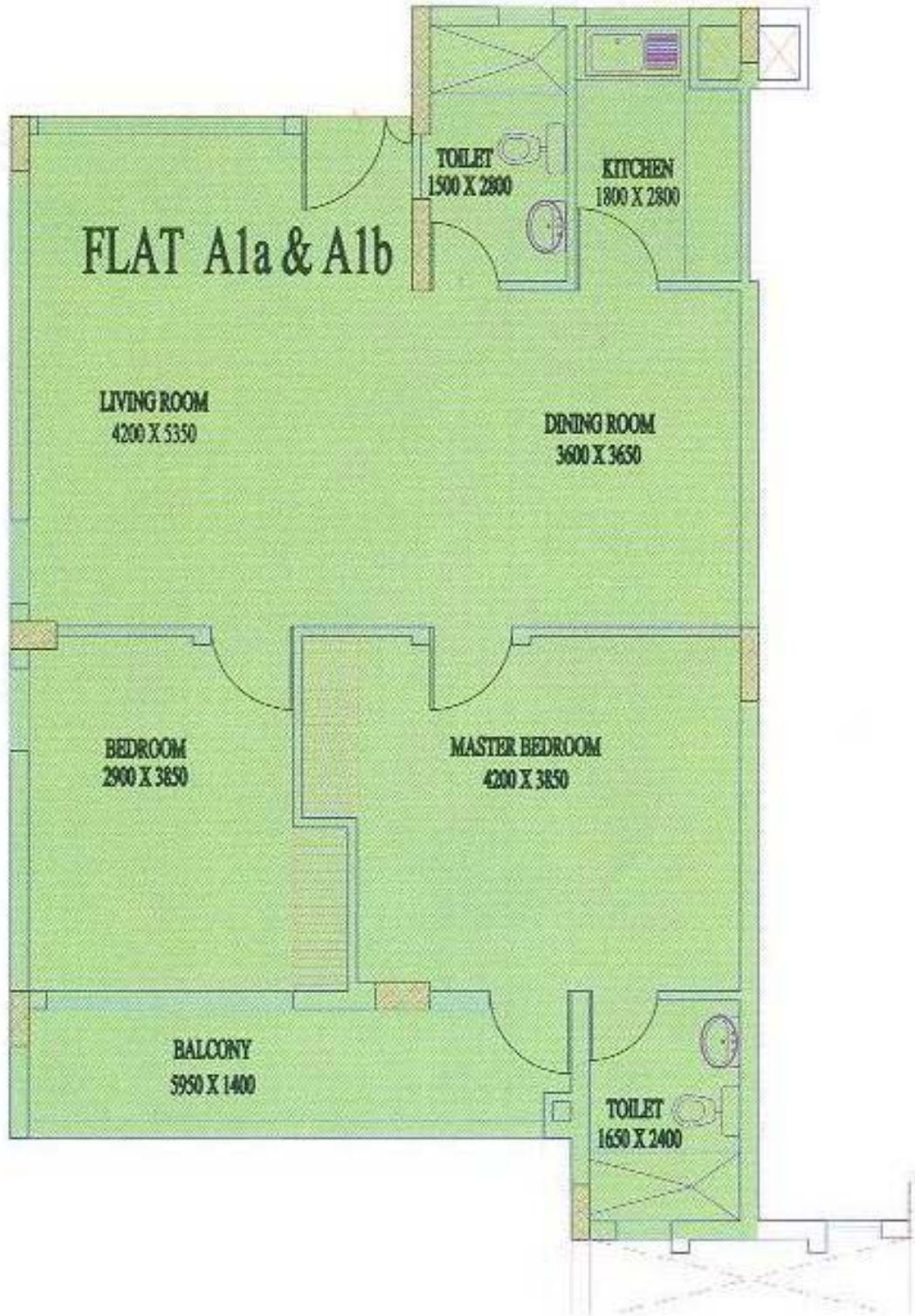




Master Plan

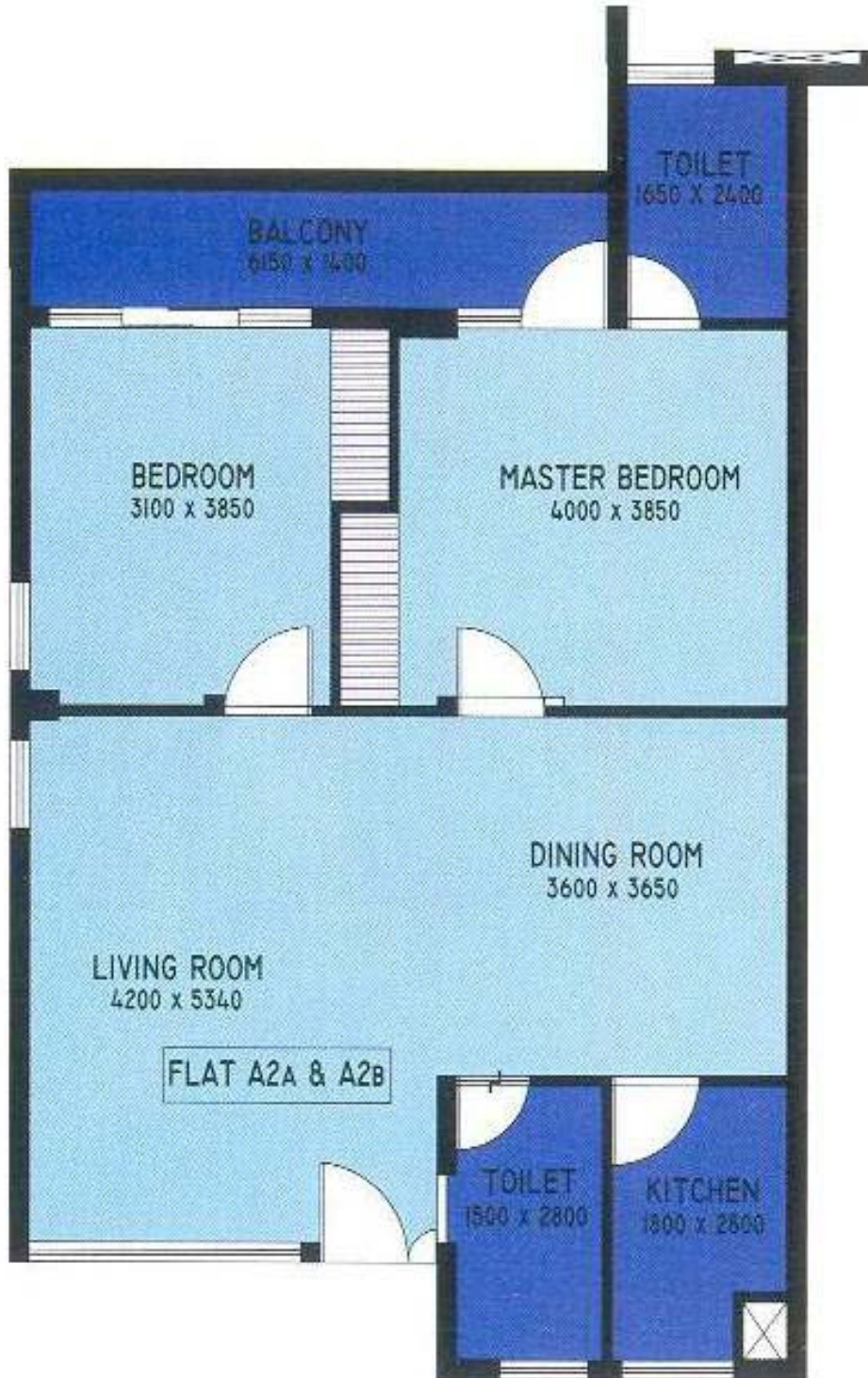


Type	Floor	SBU Area
A1a & A1b	2,3,4,5	1355 sqft

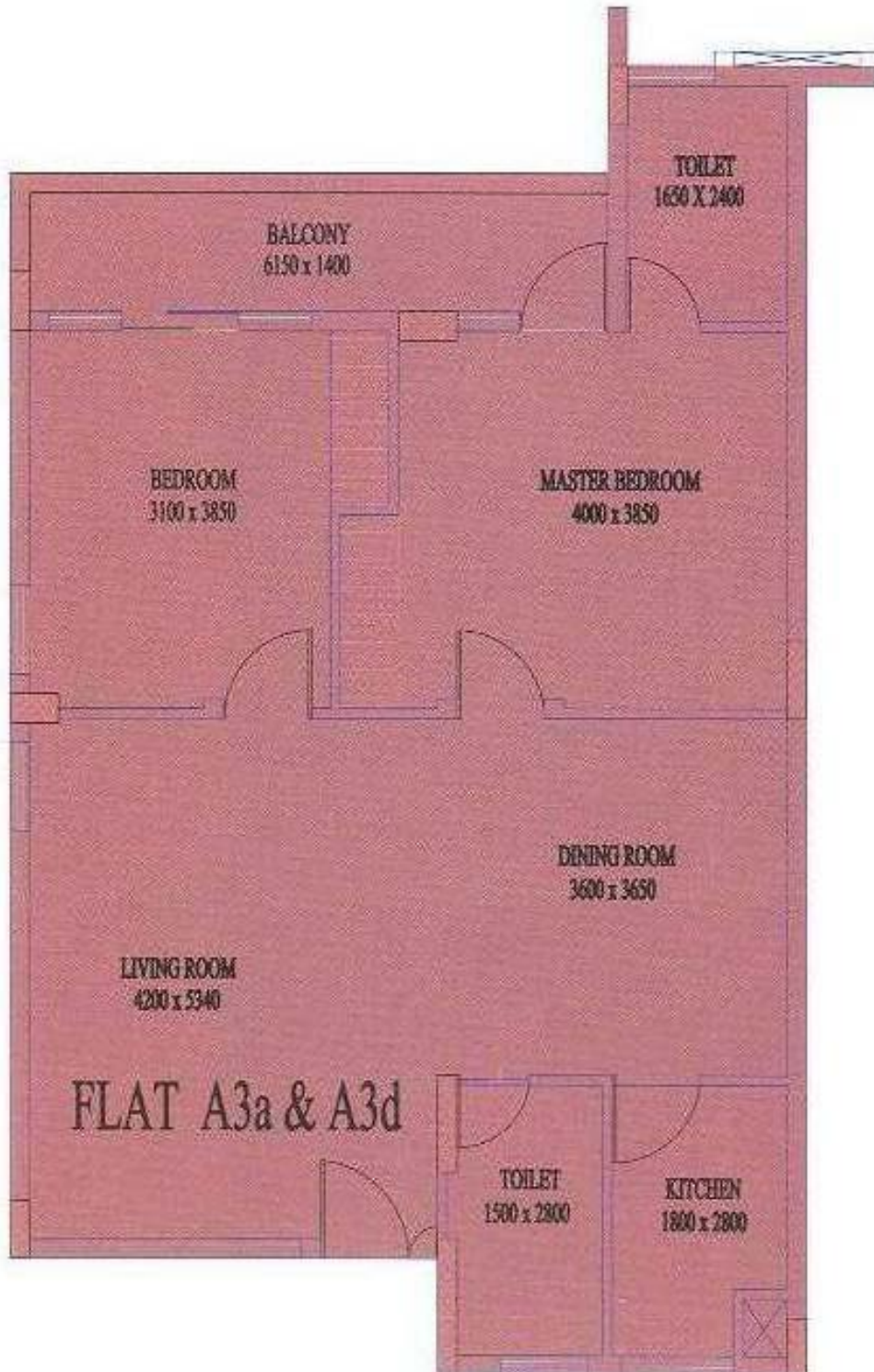




Type	Floor	SBU Area
A2a & A2b	2,3,4,5	1336 sqft



Type	Floor	SBU Area
A3a & A3d	1	1334 sqft

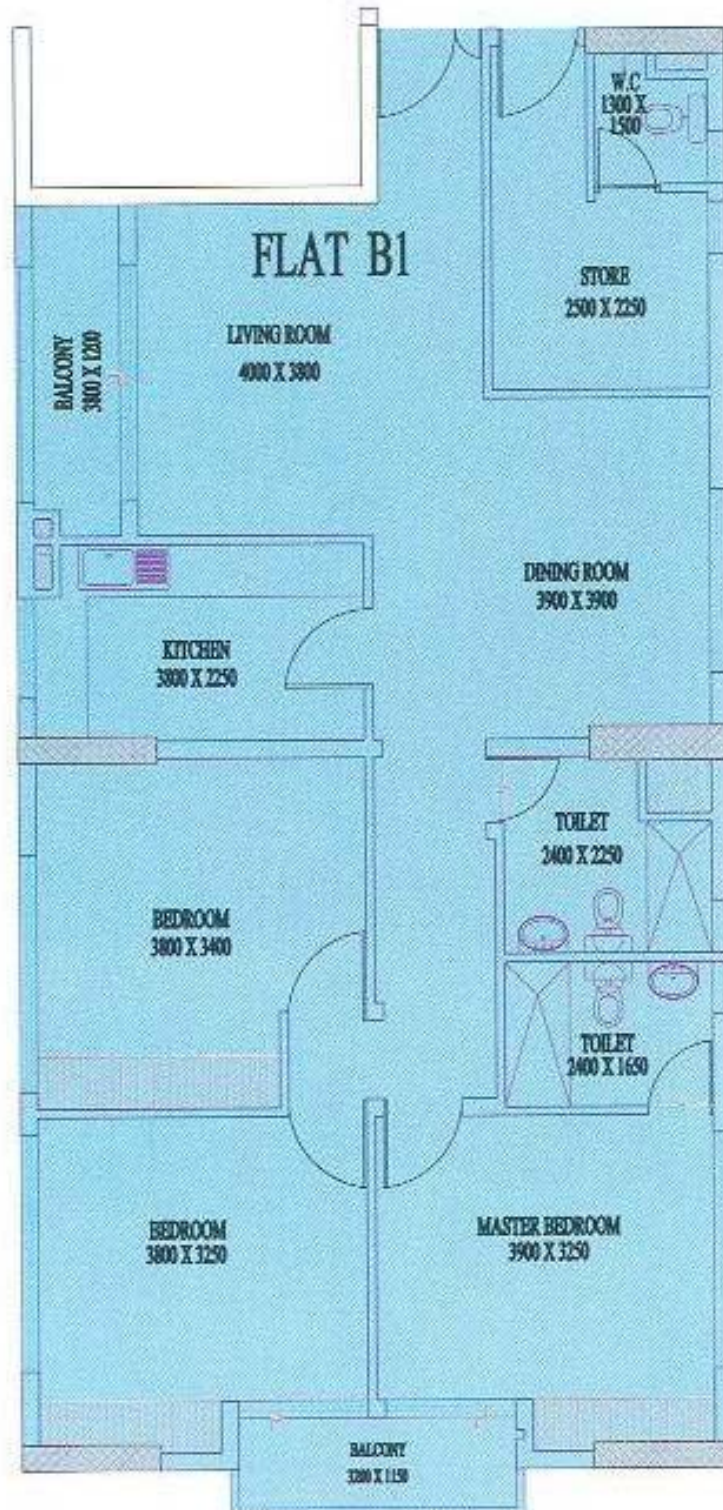


Type	Floor	SBU Area
A3b & A3c	1	722 sqft

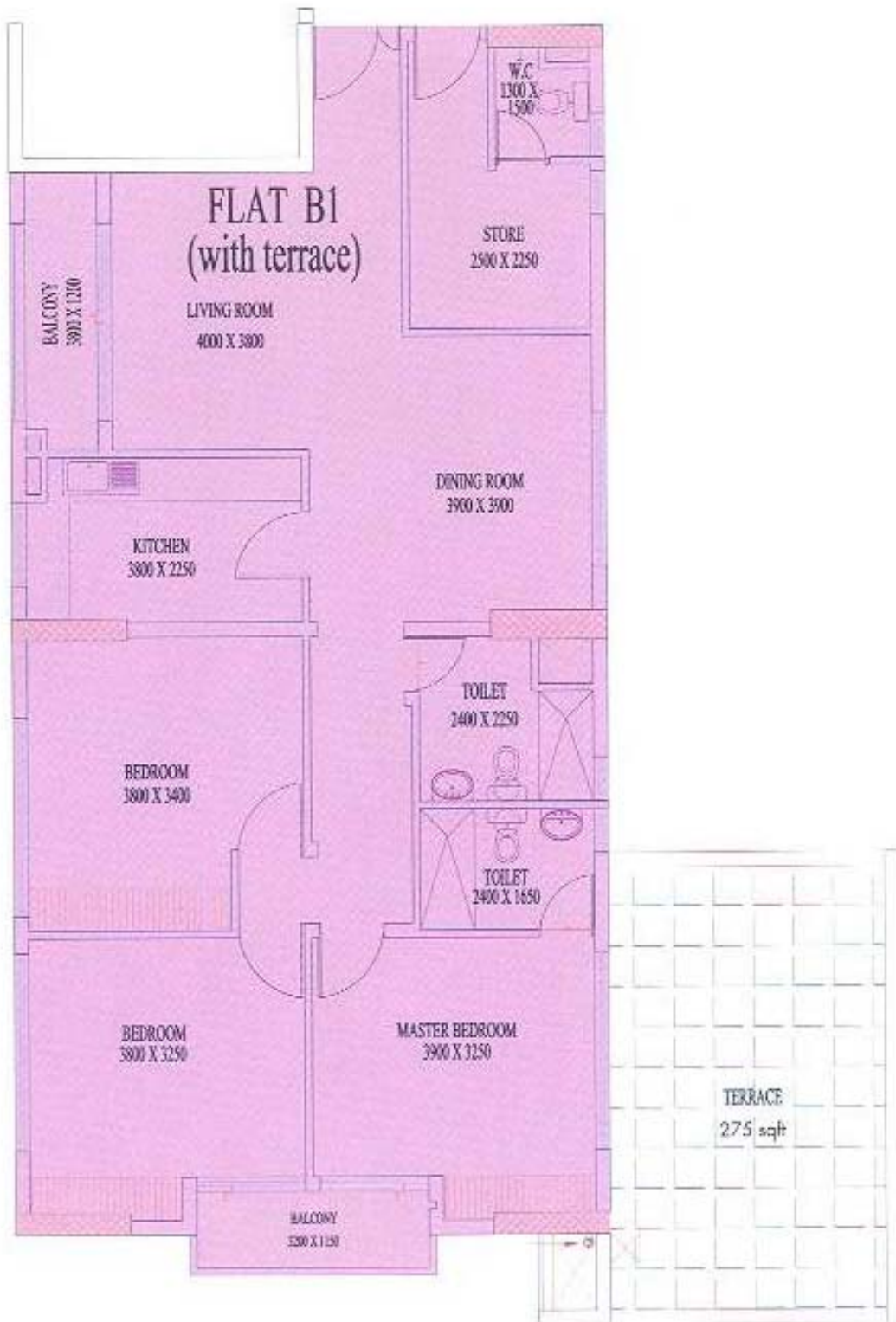




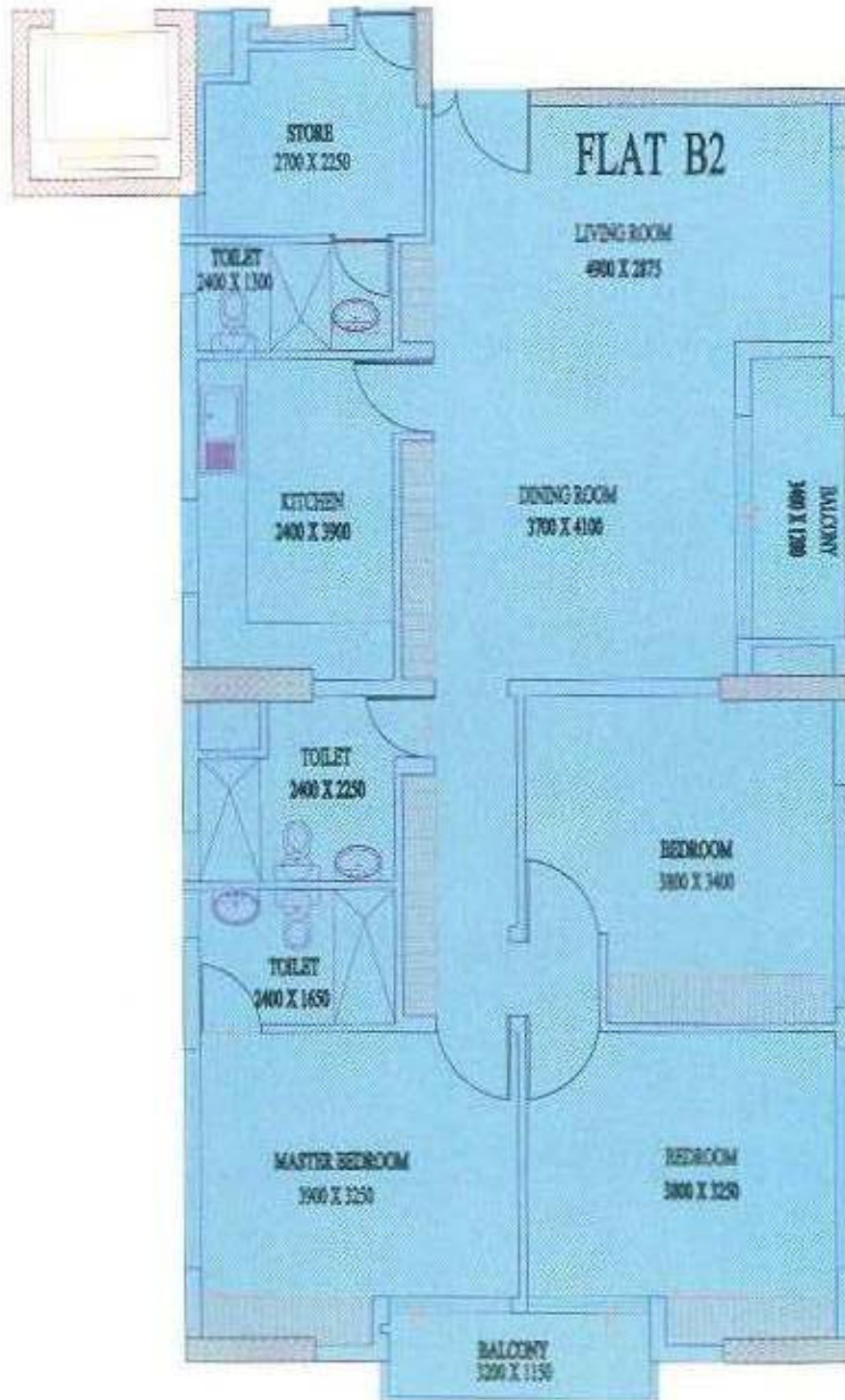
Type	Floor	SBU Area
B1	1,2,3,7,8	1811 sqft



Type	Floor	SBU Area
B1+Terrace	6,11	1811+275 sqft



Type	Floor	SBU Area
B2	1,2,3,7,8	1830 sqft

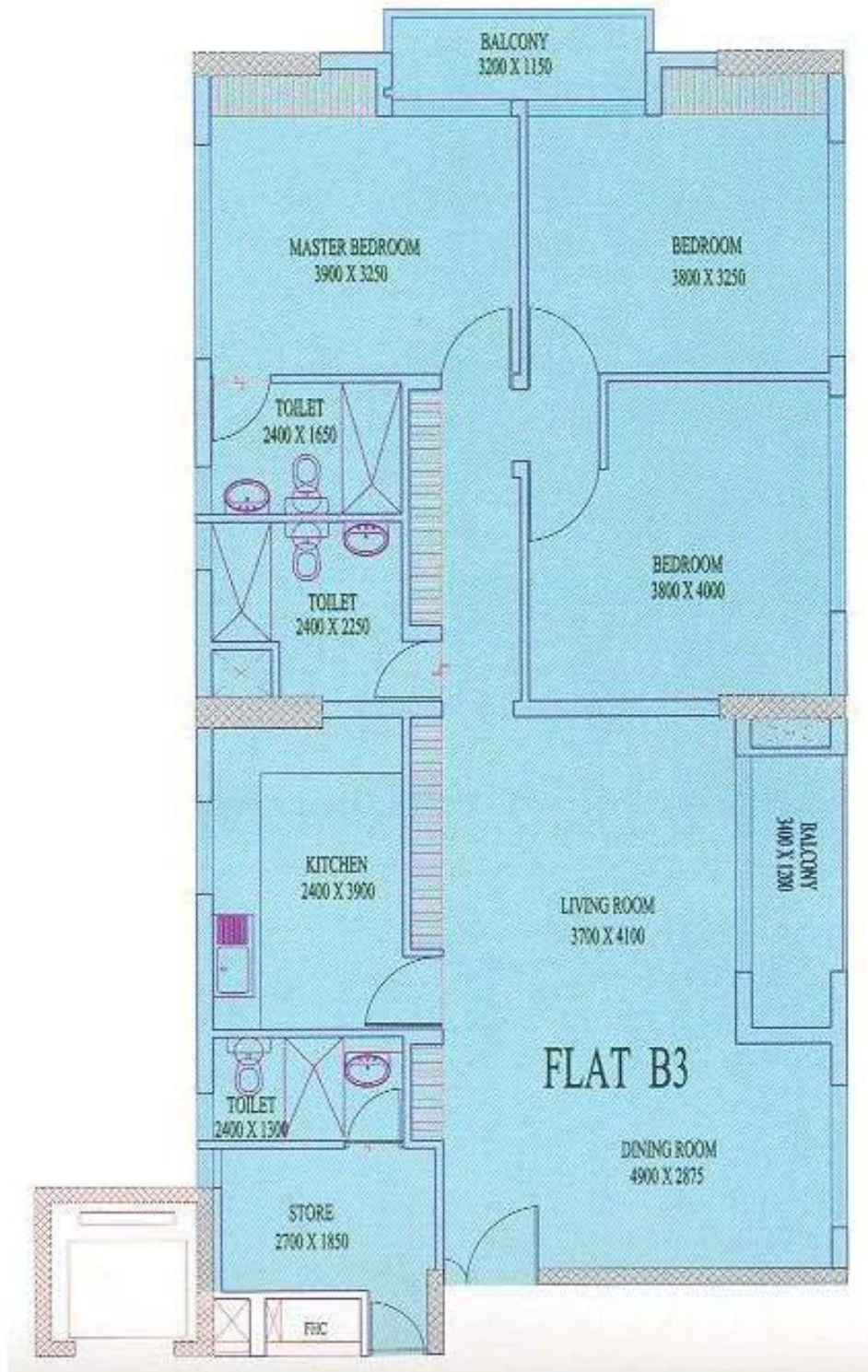




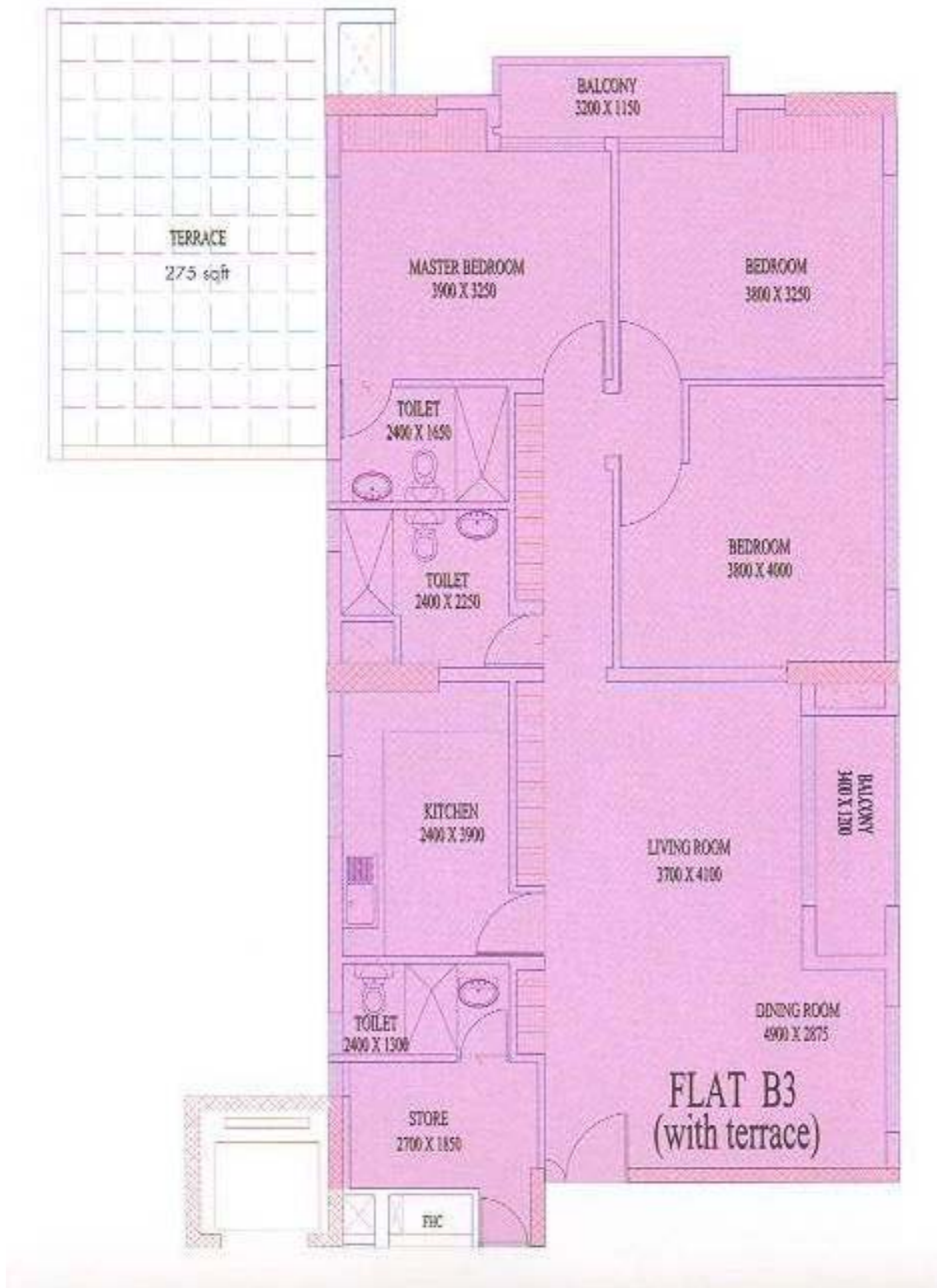
Type	Floor	SBU Area
B2+Terrace	6,11	1830+275 sqft



Type	Floor	SBU Area
B3	1,2,3,7,8	1830 sqft

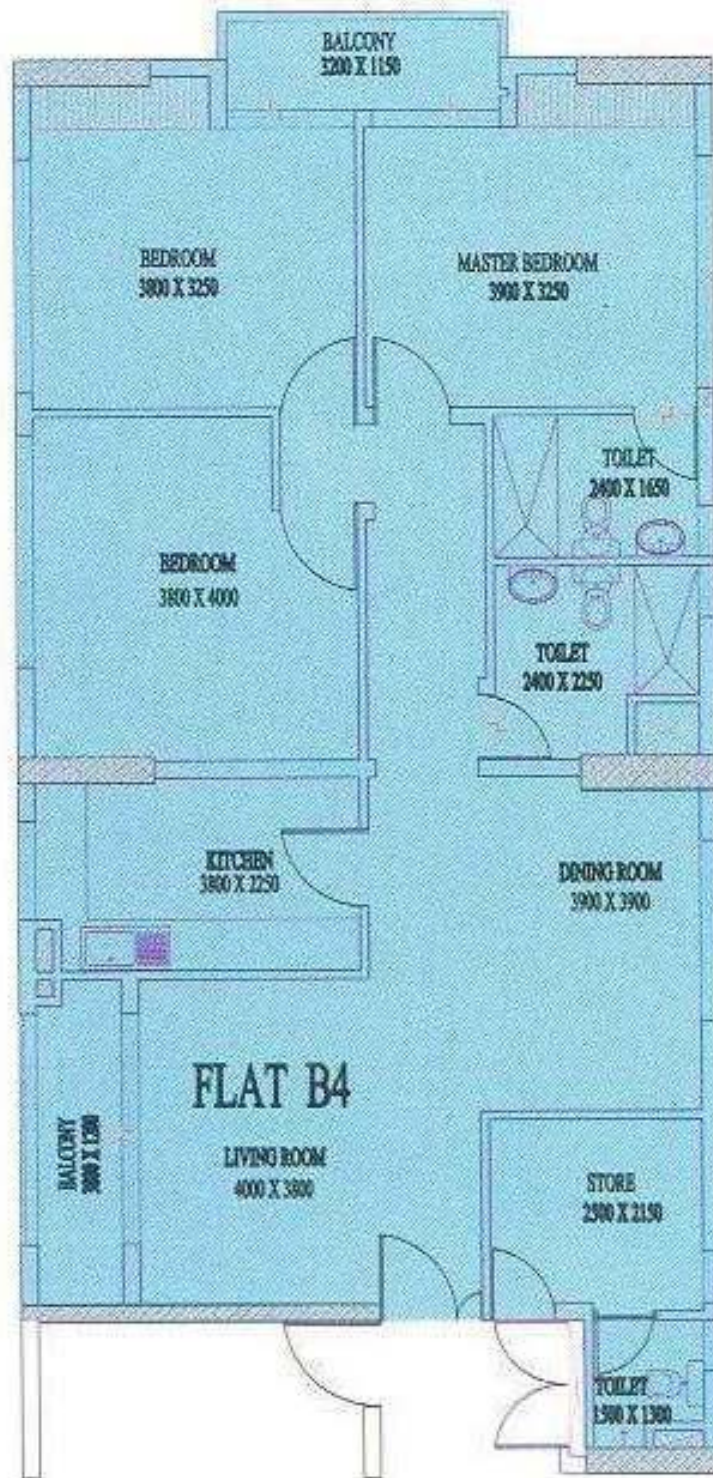


Type	Floor	SBU Area
B3+Terrace	6,11	1830+275 sqft





Type	Floor	SBU Area
B4	1,2,3,7,8	1750 sqft

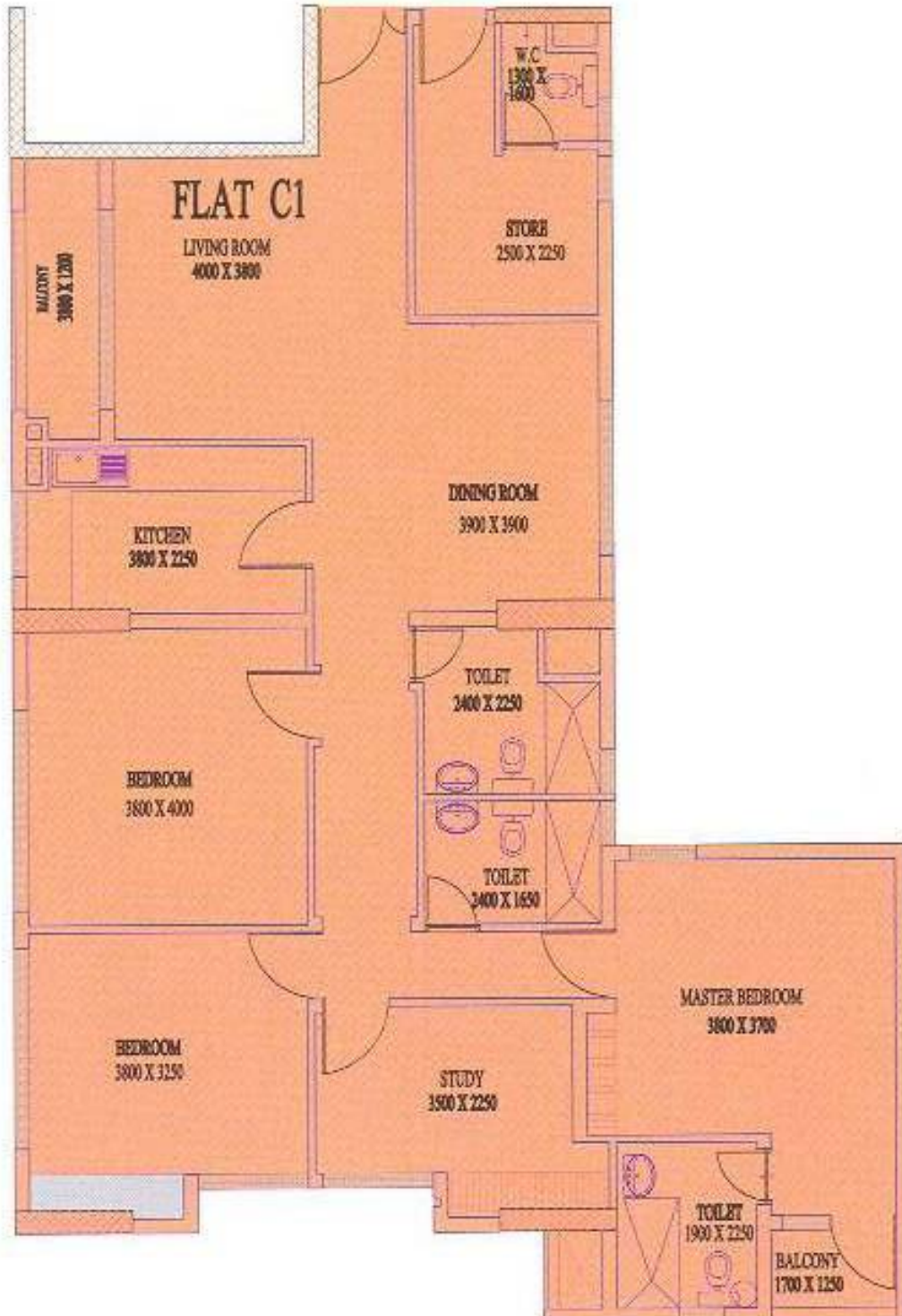


Type	Floor	SBU Area
B4+Terrace	6,11	1750+275 sqft





Type	Floor	SBU Area
C1	4,5,9,10	2114 sqft





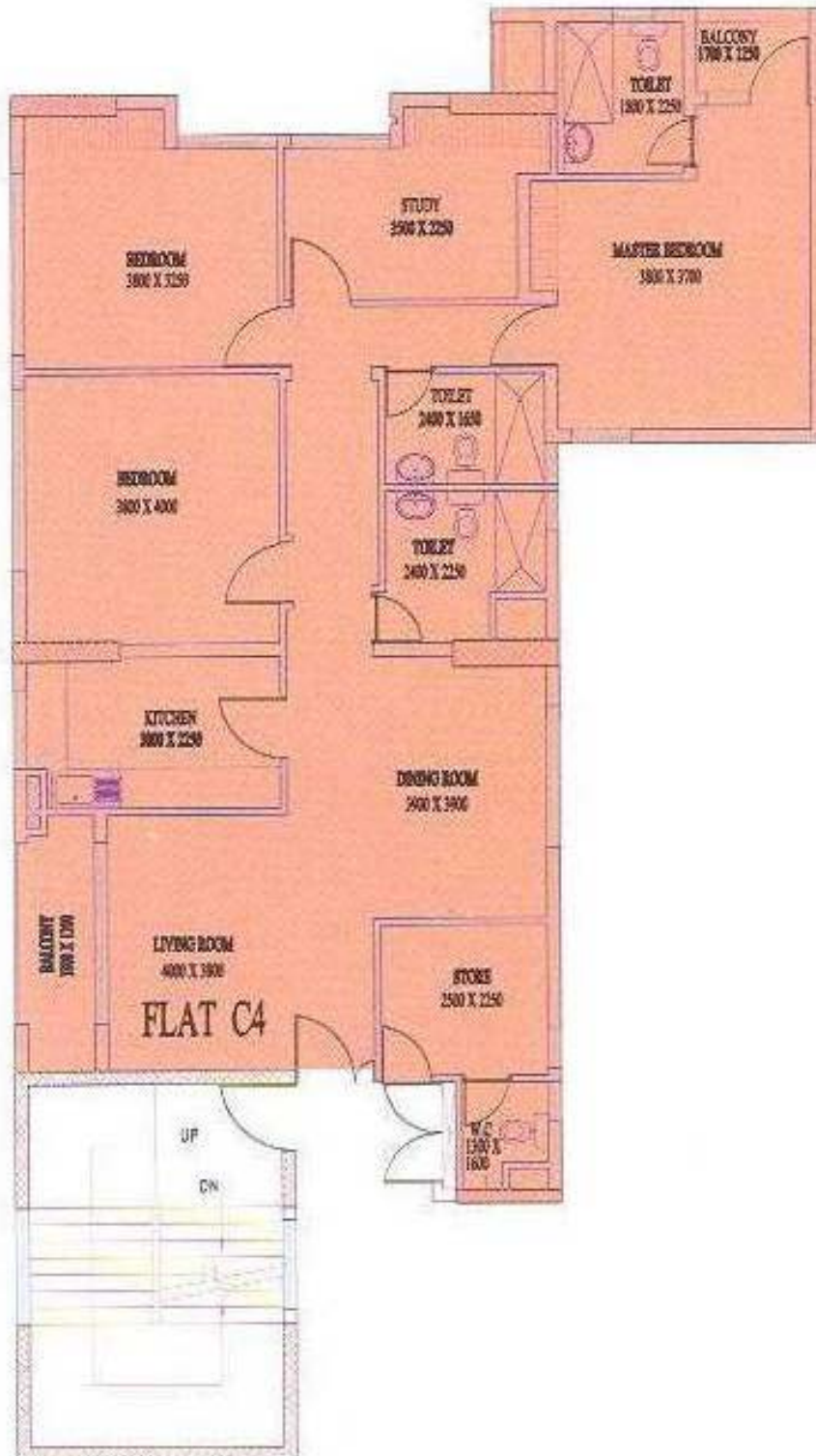
Type	Floor	SBU Area
C2	4,5,9,10	2133 sqft



Type	Floor	SBU Area
C3	4,5,9,10	2133 sqft

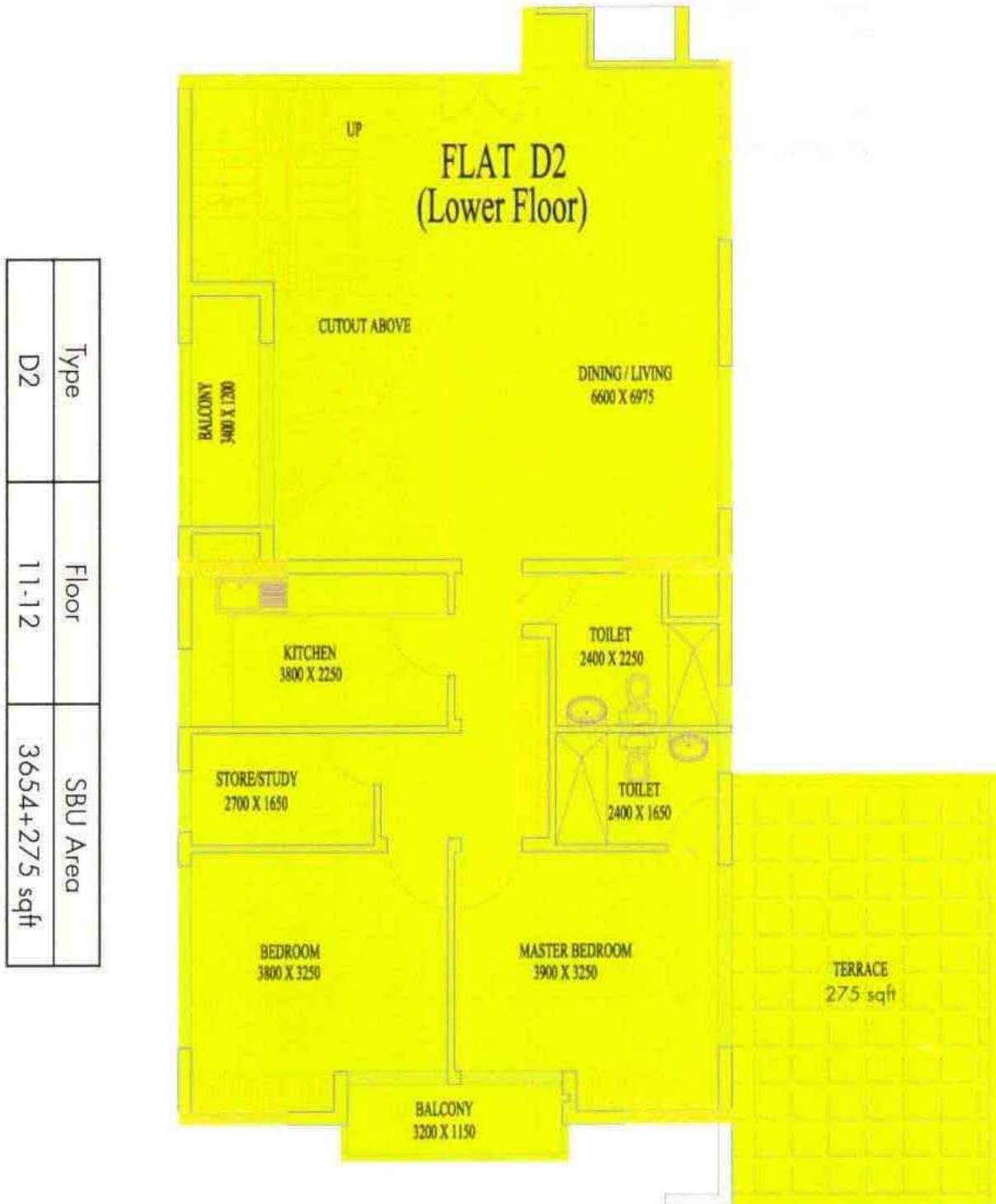


Type	Floor	SBU Area
C4	4,5,9,10	2053 sqft

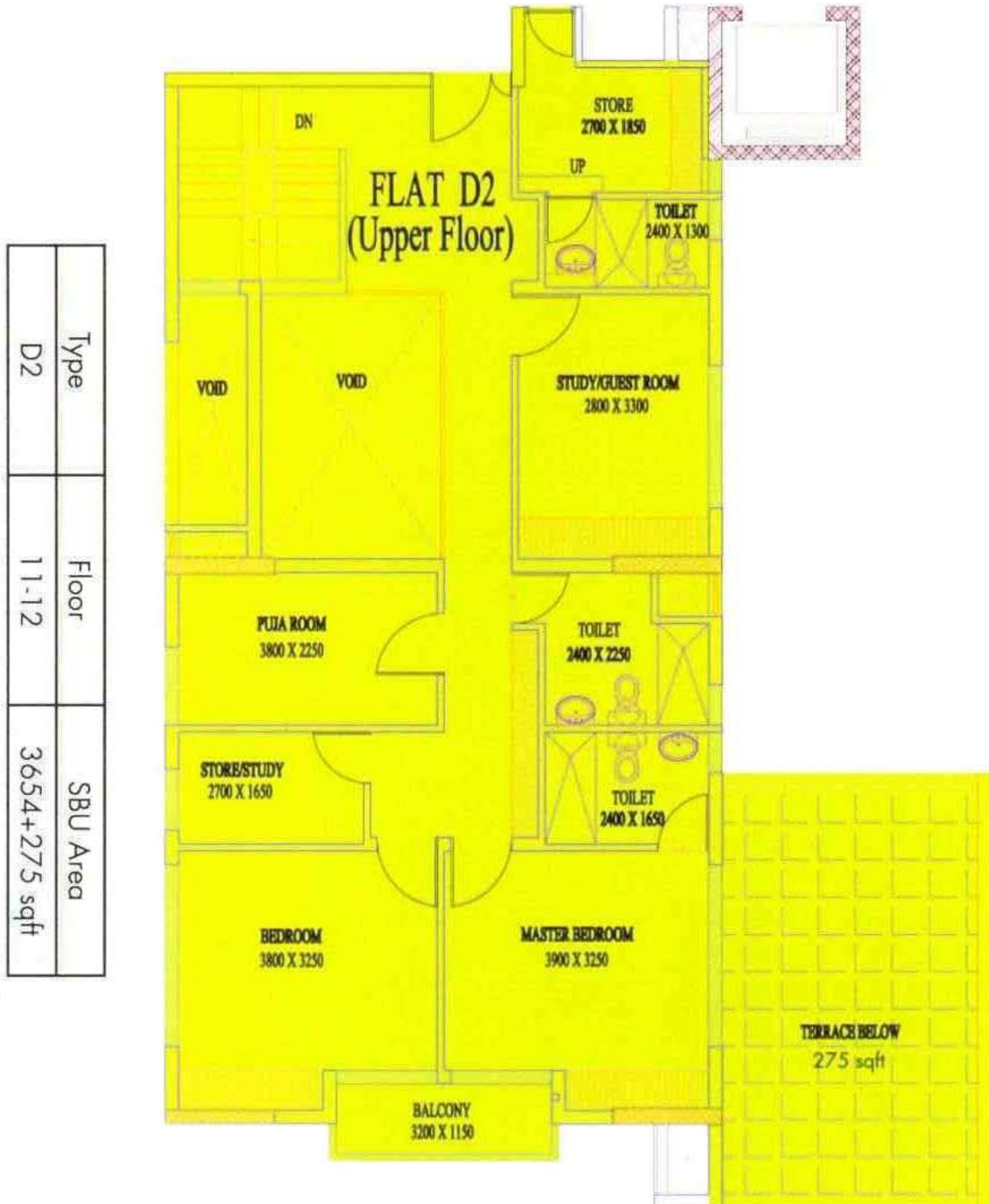




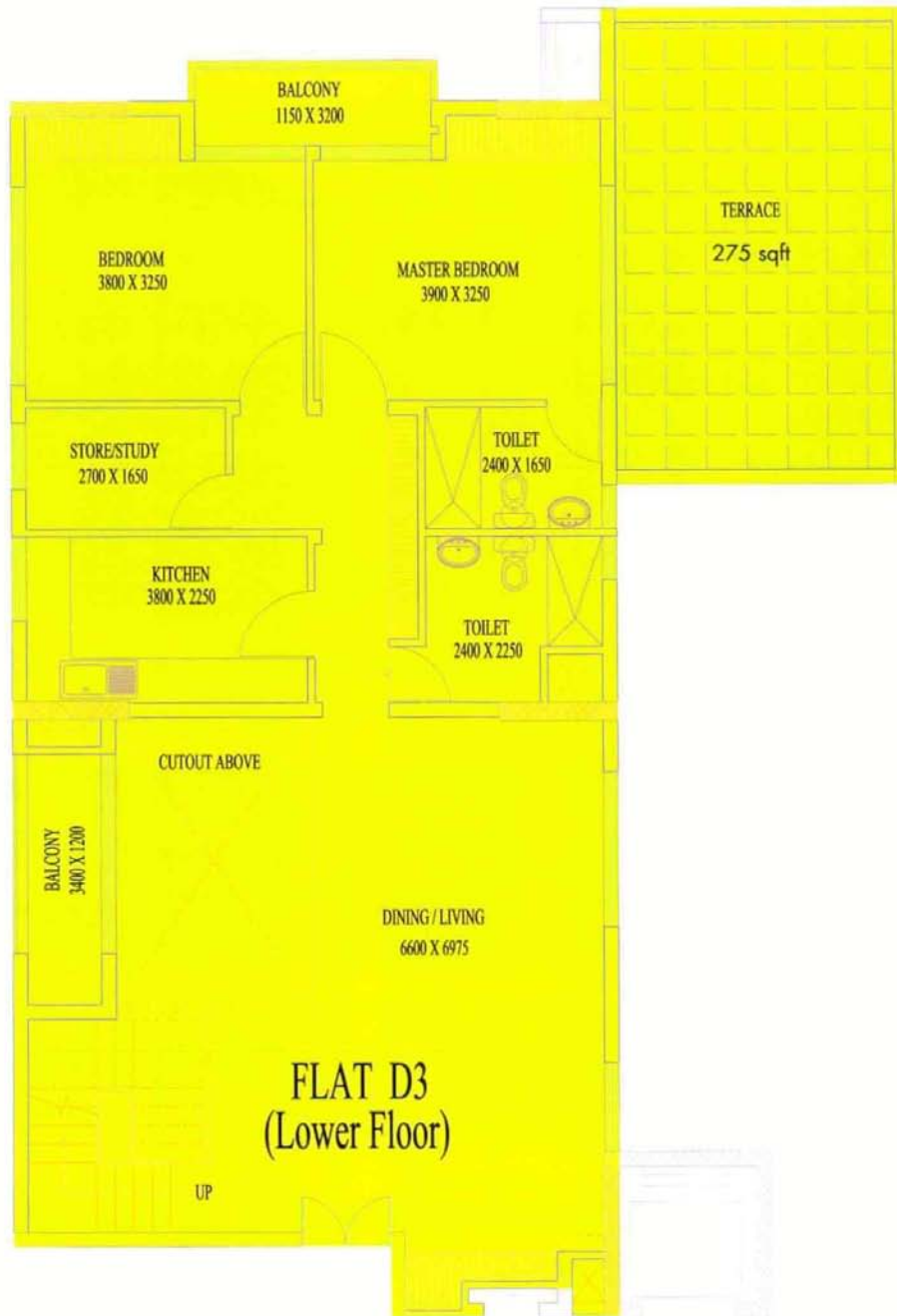
Type	Floor	SBU Area
D2	11-12	3654+275 sqft



Type	Floor	SBU Area
D2	11-12	3654+275 sqft



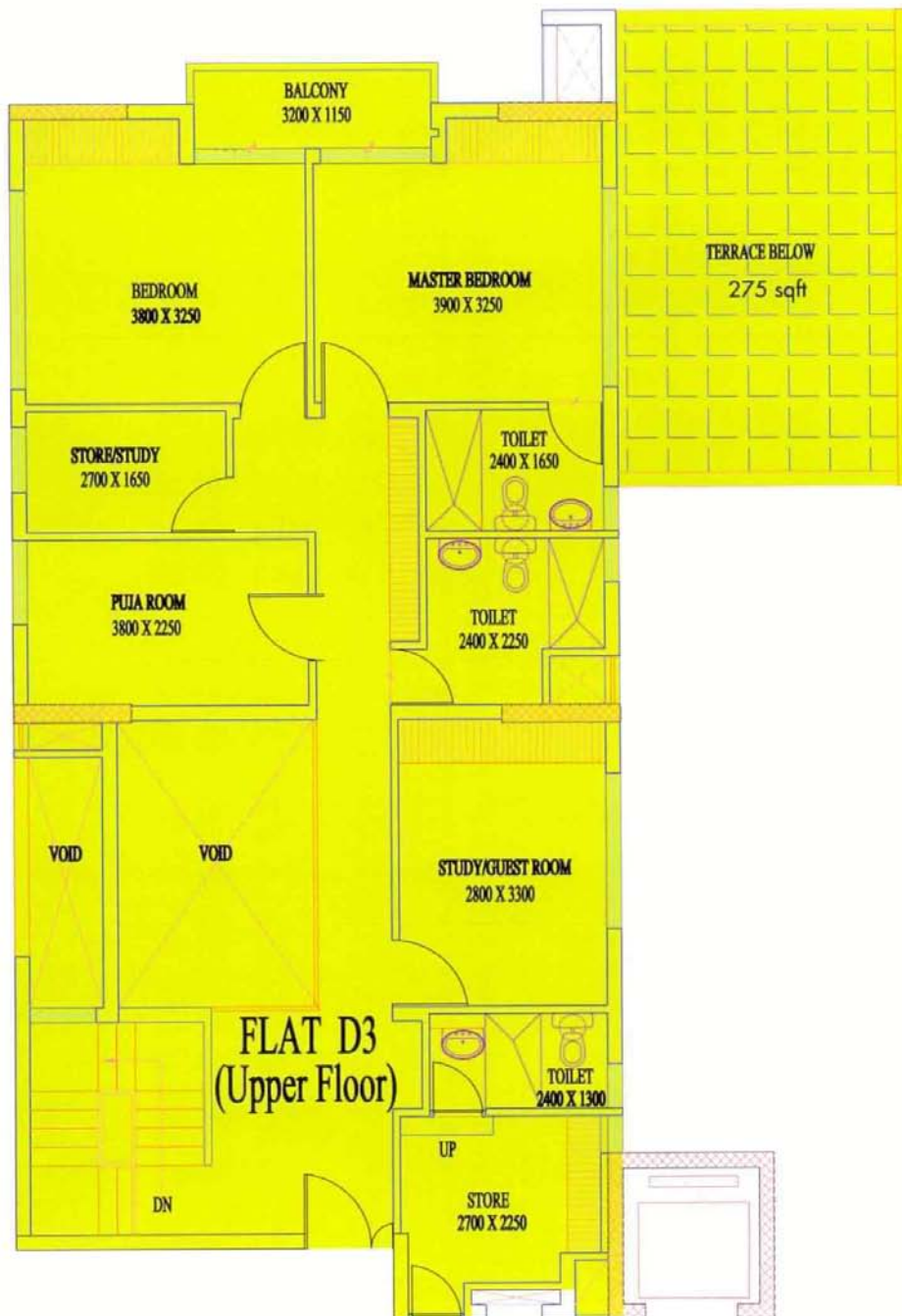
Type	Floor	SBU Area
D3	11-12	3654+275 sqft



Type	Floor	SBU Area
D3	11-12	3654+275 sqft



Type	Floor	SBU Area
D3	11-12	3654+275 sqft



Type	Floor	SBU Area
D3	11-12	3654+275 sqft

## Developer



Bengal Shrachi Housing Development Ltd.

## Architect

Ajoy Choudhury



12-A, Lord Sinha Road, Shyamkunj Appt.

Flat # 403, Kolkata 700071 WB

+91 81004 44477



[sales@rabcoestates.com](mailto:sales@rabcoestates.com)