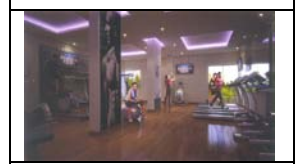




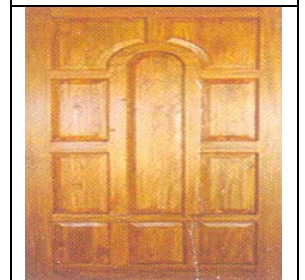
Amenitigs

- ❖ Rooftop Swimming Pool with Landscaped Greens
- ❖ Fully Equipment AC Gym
- ❖ AC Community Hall
- ❖ AC Indoor Games Room
- ❖ Children's Play Area



Specifications

- ❖ **Grand Entrance Lobby:-** Well-decorated entrance lobby with premium texture paint finish in common areas such as staircases
- ❖ **Elevation:-** An iconic building, meticulously designed. Combination of anti-fungal and textured paint.
- ❖ **Foundation & Structure:-**
Reinforced cement with concrete on piles and sheer walls wherever necessary.
Strict surveillance on quality and architecture will ensure the building is earthquake resistant; RCC framed constructions for added strength.
- ❖ **Wall Finish:-**
Putty finish smooth walls
External: 10” thick brick wall, including plaster and paint
Internal: 6” thick brick wall, including plaster and paint
- ❖ **Doors:-**
Internal Doors: Both side painted door
Main Door: One side teak finish door
- ❖ **Windows:-**
Colour anodized or powder coated glazed aluminum windows
Double glazed glass panels in all bedrooms to minimize noise pollution



- ❖ **Hardware & Fittings:-** Branded locks and hardware fittings of Yale, Godrej or equivalent make
- ❖ **Floors & Dado:-**
 - Large 800x800 vitrified tiles in living and dining and 600x600 vitrified tiles in all bedrooms
 - Anti-skid ceramic tiles in kitchen floors
 - Anti-skid floor tiles in bathroom and designer tiles on walls upto 8 ft height
- ❖ **Elevators:-** High speed automatic lifts of Kone/Schneider/equivalent make with well-decorated lift cars
- ❖ **Common Lighting:-**
 - Overhead illumination for compound and street lighting inside the complex
 - Use of LED lighting in major areas to minimize common area power consumption
- ❖ **Electrical Details:-**
 - PVC conduit pipe with copper wiring, MCBs/ELCBs with sufficient power points for necessary gadgets
 - Fire resistant wires with premium modular switches of Crabtree/Havells or equivalent make
 - Concealed wiring of reputed brands for electricity, telephone, internet etc. inside the apartment
 - Quality earthing for all electro-mechanical gadgets
- ❖ **24x7 Security & Fire Prevention:-**
 - Power back-up to 5 KVA sufficient to run all your electrical gadgets including Air-Conditioners*
 - Security surveillance facility with CCTV and 24x7 security guards
 - Fire fighting arrangement as per West Bengal Fire Service recommendation
 - Smoke detectors with sprinkler system for fire prevention
 - Required number of evacuation points and refuge platforms for residents' safety along with fire alarms
 - Video door phone facility coupled with intercom system



❖ **Treatment:-**

Anti-termite during various stages of construction
Thermal insulation treatment for the roof

❖ **Water Treatment & Proofing:-**

Each apartment assures 24 hour treated water supply
Superior quality waterproofing wherever necessary

❖ **Kitchen:-**

Granite counter top
Dado of cement tiles above platform upto 2 feet height
Stainless steel sink
Hot and cold water provision
Separate KMC water line for drinking water
Ceramic wall tiles in utility balcony

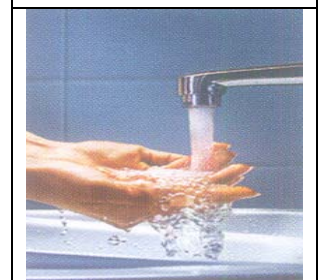
❖ **Toilets:-**

Water efficient sanitary fixtures (Hindware Italian collection/Kohler or equivalent)
Top-of-line international quality fittings of Jaguar or equivalent make
Designer large sized wall tiles up to 8 feet height
Anti-skid flooring
Hot and cold water provision

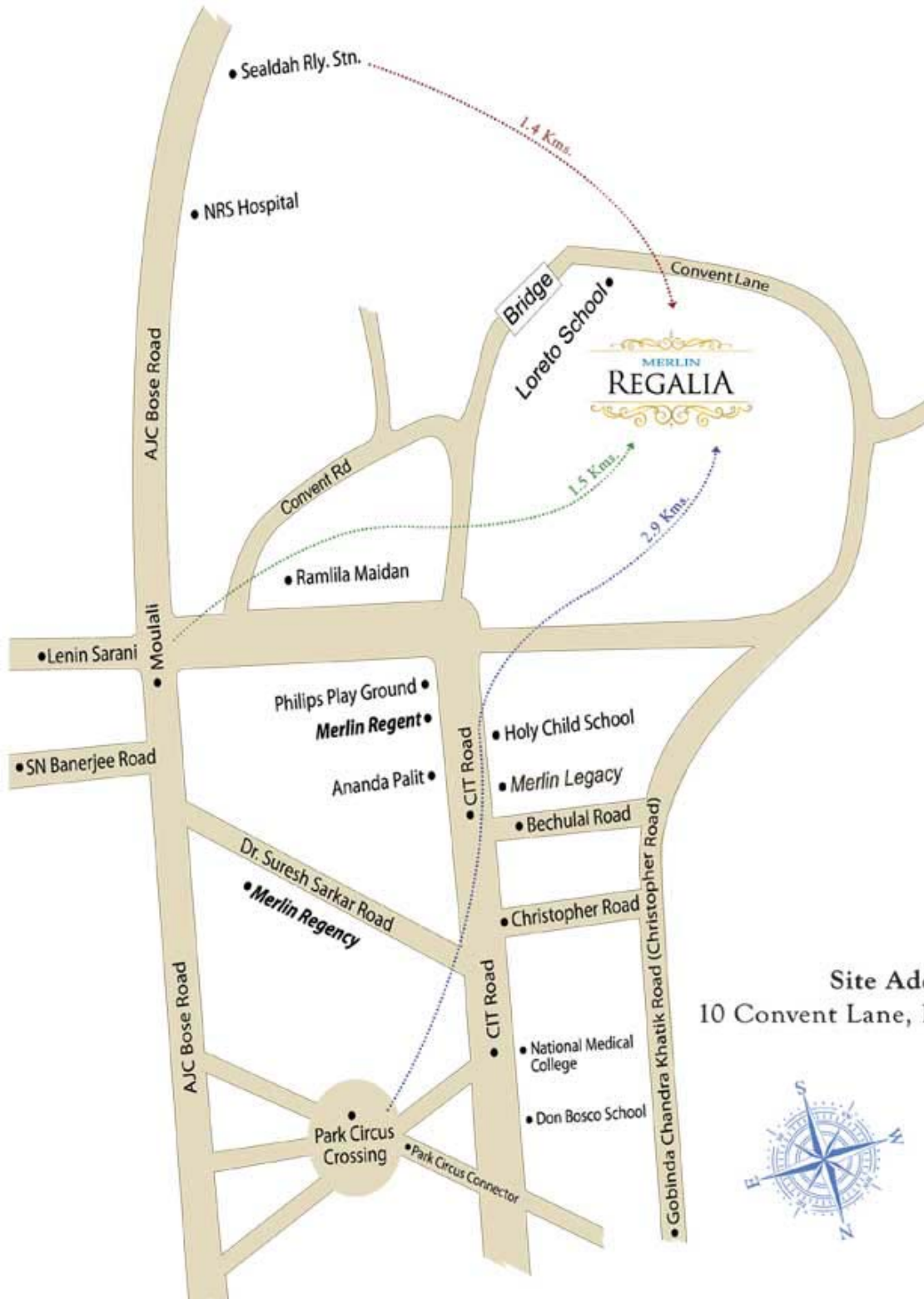
❖ **Live amongst Green, Air & Water:-**

Ample open area and greenery all around
Terraces in some apartments to give a blissful feeling
Meticulously planned apartments, two/three sides open with cross-ventilation and adequate daylight

❖ **Air-conditioning:-** Split air-conditioning in all rooms including the dining/living room



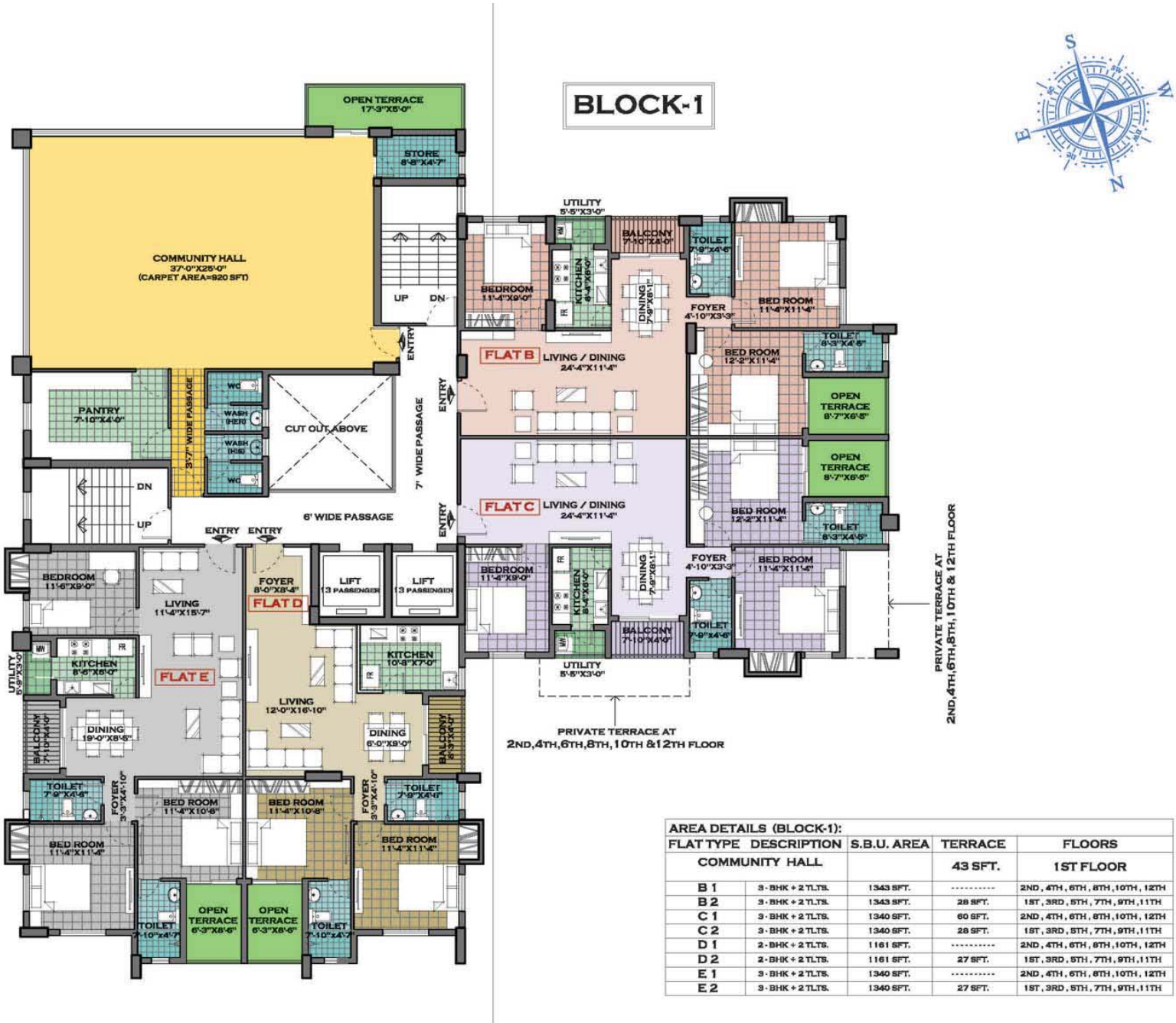
Location



Site Address:
10 Convent Lane, Kolkata - 700015



Typical Floor Plan



Developer



12-A, Lord Sinha Road, Shyamkunj Appt.

Flat # 403, Kolkata 700071 WB

+91 81004 44477



sales@rabcoestates.com