



Specifications

- ❖ **Structure:-**
 - R.C.C framed structure on pile foundation with brick walls (internal & external).
 - Basement with RCC Retaining Walls.
 - Earthquake Safety compliant to Seismic Zone- IV.
 - Bareshell-** For tailormade fitouts to be done by the company.
 - Comfortable Floor Height of 3.9 mts (floor to floor).

- ❖ **Flooring:-**
 - Lobby Ground Floor-** Italian Marble/Granite.
 - Lobby Upper Floor-** Vitrified Tiles/Granite.
 - Unit-** Vitrified Tiles.
 - Toilet-** Vitrified Tiles/Anti-skid Tiles.

- ❖ **Windows:-**
 - Exclusive powder coated Aluminium casement/sliding window.
 - Curtain wall in the front façade.

- ❖ **Walls Finish Unit Area:-**
 - Plaster of Paris; Toilets- Ceramic Tiles.

- ❖ **Toilets Door:-**
 - Wooden flush door finished with enamel paint.

- ❖ **Toilet Fittings:-**
 - Toilet equipped for handicaps.
 - Designer Ceramic tiles on walls up to door height.
 - High quality sanitary ware of reputed brand.
 - Modern CP Fittings of sleek/jaquar or equivalent.

- ❖ **Parking:-**
 - Adequate parking on basement and ground floor.

- ❖ **Unit Main Door:-**
Wooden shutter.
- ❖ **HVAC:-**
Each Unit provided with VRV A.C. Machine (outdoor units only).
- ❖ **Electricals:-**
Unit provided with main DB.
Toilet Area- Complete with copper wiring.
- ❖ **Elevator:-**
2 New generation fully automatic elevators of OTIS/Mitsubishi make. 1 Service Lift.
- ❖ **Fire Protection:-**
Fire Safety system as per recommendations of WBFES.
- ❖ **Landscaping:-**
Beautifully Landscaped Compound with fine paving and planters all around.
- ❖ **Communication:-**
Provisions for easy communication wiring.
Direct from the ground floor or the terrace to each office.
- ❖ **Security:-**
CCTV and Camera aided vigilance for complete safety.
Intercom facility to each office to the reception/security.
- ❖ **Water Supply:-**
Corporation Water.
Supplemented with deep tube well subject to approval by Municipality.
- ❖ **Power Supply:-**
CESC HT/LT, standby power for lifts, 100% power back up by DG Set.

Location



Type & Area

Ground Floor Plan



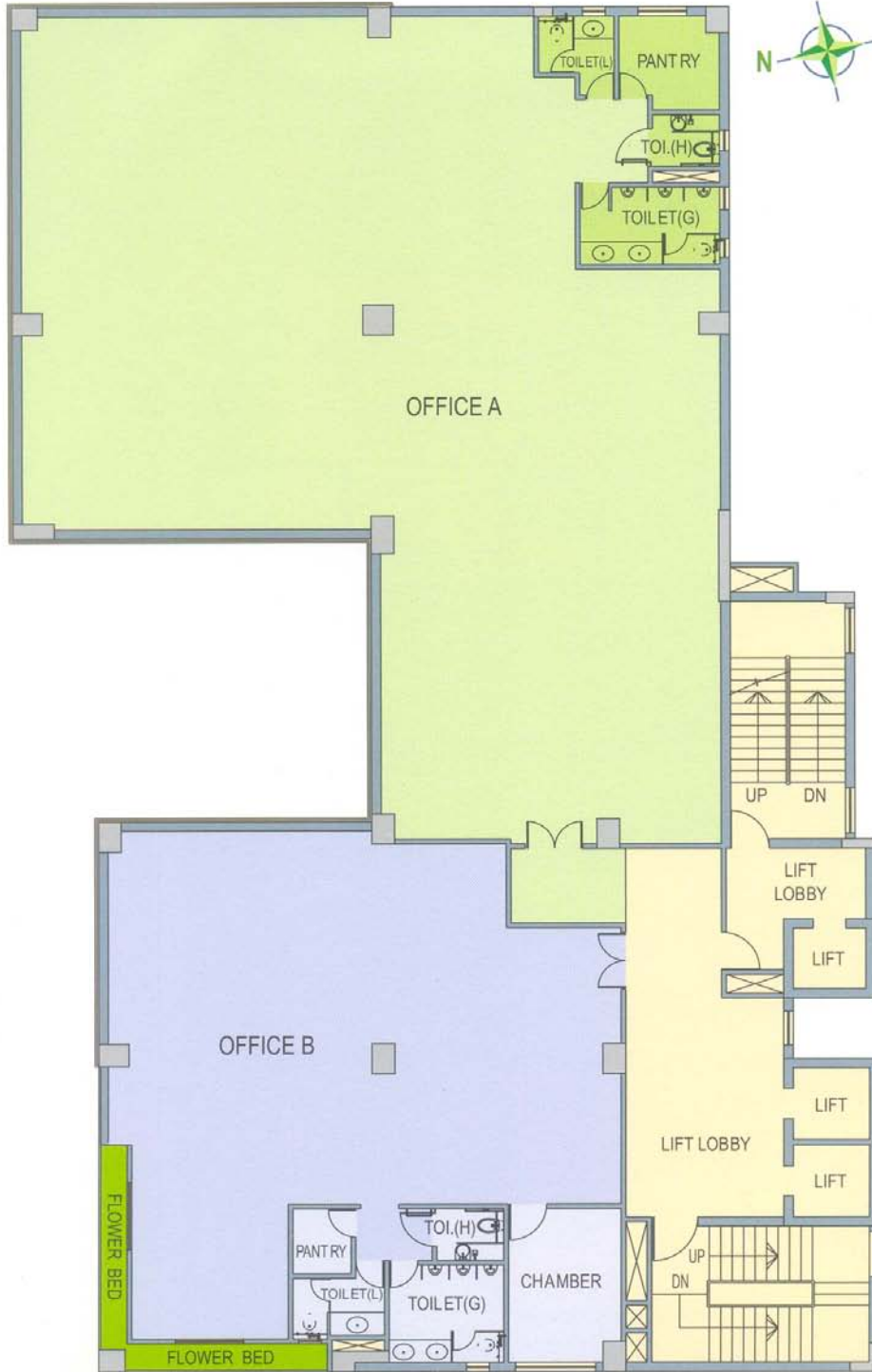
1st Floor Plan



1st Floor Plan

Office	Built Up	Super Built Up	Attached Terrace
1A	3750	5415	861
1B	2068	2986	639

2nd, 3rd, 4th, 5th & 6th Floor Plan



2nd, 3rd, 4th, 5th & 6th floor plans

2nd to 6th Floor

Office	Built Up	Super Built Up
2A	3750	5415
2B	2068	2986
3A	3750	5415
3B	2068	2986
4A	3750	5415
4B	2068	2986
5A	3750	5415
5B	2068	2986
6A	3750	5415
6B	2068	2986

7th & 8th Floor Plan

7th & 8th floor plans



7th & 8th Floor

Office	Built Up	Super Built Up
7A	3688	5326
7B	2711	3915
8A	3688	5326
8B	2711	3915

9th Floor Plan



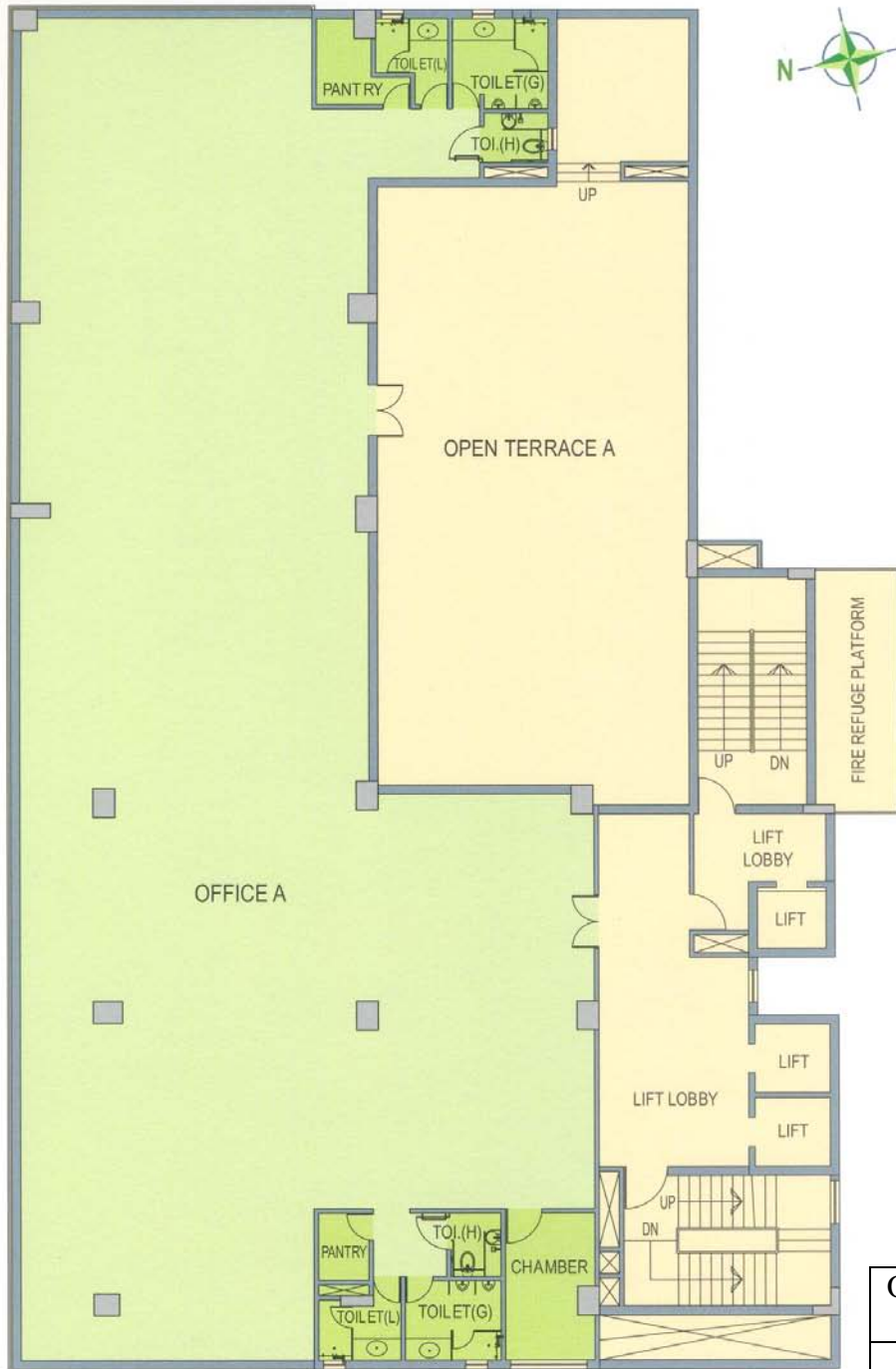
9th Floor

Office	Built Up	Super Built Up
9A	3688	5326
9B	2711	3915

9th floor plan

10th & 11th Floor Plan

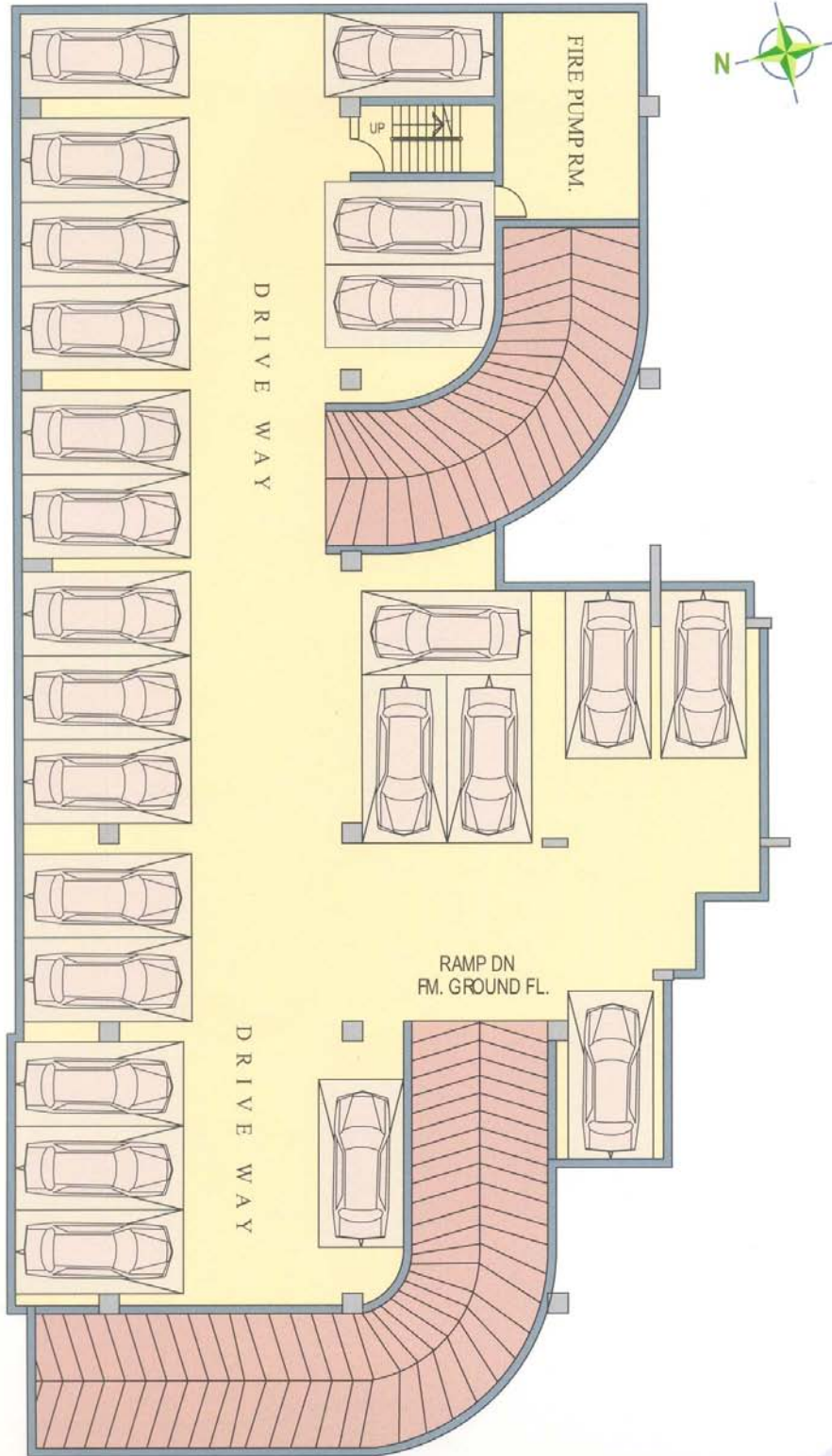
10th & 11th floor plans



10th & 11th Floor

Office	Built Up	Super Built Up	Attached Terrace
10A	5391	7785	1780
11A	5391	7785	

Basement Floor Plan



Basement floor plan

Developer



Tirumala Group

Architect



Agrawal & Agrawal



12-A, Lord Sinha Road, Shyamkunj Appt.

Flat # 403, Kolkata 700071 WB

+91 81004 44477



sales@rabcoestates.com