



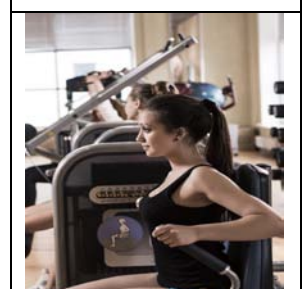
## The Intelligent Home

- ❖ **IP Enabled Camera:-** These cameras relay live images on the internet protocol backbone thereby letting you keep a close vigil.
- ❖ **Panic Button:-** Do not panic if you are alarmed with something inside your house. Just press the console button and you will immediately have help at your door.
- ❖ **Fire & Gas Alarm:-** safety is primary for the residents and the fire & gas alarm installed in each of the apartments assure them the same.
- ❖ **Curtain Control:-** adjusting the curtains is now easy and you will not have to do it manually every single day! Just tap on the console screen and it's done
- ❖ **Mood Lighting:-** Set the right mode as per your mood with just a tap on your console.
- ❖ **Motion Sensor Lights:-** Now the lights will turn on when you enter specific rooms and goes off once the door gets closed!
- ❖ **Access Control:-** As a resident of Dream One, you will have an electronic access control for your block/tower entry to keep the intruders away.
- ❖ **Security Systems:-** With 24x7 security monitoring CCTVs and well equipped guards around the complex, everything is protected.



## The Magnificent Club

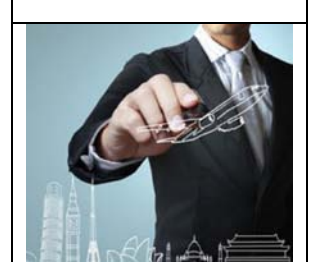
- ❖ **Multi Gym:-** Burn some calories and get fit in the highly equipped multi gym.
- ❖ **Swimming Pool:-** The temperature controlled swimming pool allows you to take a splash even on a chilly winter evening.
- ❖ **Spa:-** Enjoy a calm and peaceful spa service by professionals at the spa, the ultimate health and wellness centre in the Dream One complex.
- ❖ **Atria Lounge:-** The Atria lounge is a high end designer lounge and one of the architectural highlights of Dream One.
- ❖ **Funzone (Kids Club):-** An absolute fun area your kids for playing games and engaging in different recreational activities.
- ❖ **Banquet:-** Celebrate your happy moments with everyone around in the supremely around in the supremely designed luxurious banquet hall.
- ❖ **Cineplex:-** Take watching movie to an entirely new kevel in the highly developed mini Cineplex fitted with the best class projection and sound system.
- ❖ **Indoor Games:-** Finally a place in Dream One, where you can satiate your gaming needs, which is a part of your complex and to be present there, you just need to step out.





## Concierge Services

- ❖ **Doctor at your service:-** Finding the right doctor for a need that may arise is critical. We have doctors who will rush for your aid with just one call.
- ❖ **Ambulance on call:-** The concierge can provide an ambulance service whenever required.
- ❖ **Apartment Maintenance:-** Buyers can enter into a maintenance contract for the upkeep of their homes. So if you are an NRI or simply use it like a second home, you can drop in anytime you like and you will find everything in the house to be in order and welcoming you!
- ❖ **Specialized medical aid:-** The need of oxygen may arrive at any time if you have senior citizens at home. Along with this, blood sample collections and other specialized services are available in our service portfolio.
- ❖ **Travel Desk:-** Our concierge assistance can help you plan holdings to domestic and international destinations. Right from ticketing to travel itinerary every bit of the plan can be executed.
- ❖ **House Keeping Services:-** Your guests are at home for a function and everybody needs washing or ironing of their clothes? Just call for our superior house keeping services.
- ❖ **Luxury transport services:-** Want to book a cab for an airport/station drop? Or get a car for a city tour or go shopping? We have luxury transport assistance for you.



## Specifications

- ❖ **Structure:-** RCC frame structure. Earthquake resistant structure. Dream Eco-City uses best quality rebars and cement to build superior quality structures that last for generations.
- ❖ **Staircase and Lobby:-** Wide spacious staircase, elegantly designed Lobby and corridors with high quality marble, kota/granite stone.
- ❖ **Flooring:-**  
**Master Bedroom:** Laminated Wooden Flooring  
**Living Room:** Italian tile slab  
**Kitchen:** Anti Skid Tiles  
**Toilet:** Anti Skid Tiles
- ❖ **Toilet:-**  
**Fitting:** Elegant CP fittings of premium make  
 Antiskid tiles of premium make on the floors. And walls upto door height. Hot and Cold water points
- ❖ **Kitchen:-**  
 Granite Platform with Dado tiles upto 2' height above the counter.  
 Stainless Steel Sink.  
 Hot and Cold Water Points  
 Provision for exhaust fan
- ❖ **Windows:-** High quality powder coated sliding windows will minimize sound and air pollutants from your living space, facilitating a peaceful existence within the confines of your abode.



- ❖ **Doors & Hardware:-**
  - Frame:** Sal Wood
  - Shutter:** Flush Doors
  - Main Door:** Solid Flush Door.
  - Brass and Stainless Steel hardware fittings of reputed make.
- ❖ **Wall Finishes:-**
  - Exterior:** Weather proof paint and decorative finish.
  - Interior:** Smooth Plaster of Paris wall finish.
- ❖ **Electrical and Voice/Data points:-**
  - Copper wiring of premium make MCB of premium make.
  - AC point in Master bedroom/Geyser points in bathroom.
  - Adequate light and fan points.
  - Modular switches of premium make.
- ❖ **Water Supply:-** 24 Hours uninterrupted treated water supply.
- ❖ **Telephone/Cable TV:-** Telephone, Cable TV points in Living & Dining Rooms. Telephone wiring and points in every home enabled external telecom service providers to bring you voice and data services. Cable TV wiring and points will be provided that allow residents the option of availing a host of DTH services.
- ❖ **Wi-Fi:-** Certain areas of the complex will be Wi-Fi enabled so that you can access the internet on the go.
- ❖ **Power back up:-** 24x7 power back up to safe guard you from power outages.
- ❖ **Lift:-** Two High quality lifts of Otis or equivalent make in each block.
- ❖ **Fire:-** Adequate fire fighting equipment with best quality pressure water hose pipes and fire alarm system will be installed.



## Location





## Type & Area

### Master Plan





Block- 1 & 2  
Atria Club Floor Plan

BLOCK-1&2  
Atria Club Floor Plan



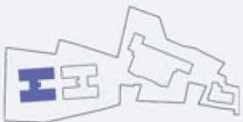
**Block- 1**  
**2nd & 3rd Floor Plan**

**BLOCK-1**

2nd & 3rd floor plan



Flat	BHK	SBA (Sq.ft)
A	3	2045
B	4	2395
D	3	2045



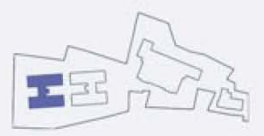
**Block- 1**  
**4th, 7th, 10th & 13th Floor Plan**



**BLOCK-1**  
4th, 7th, 10th & 13th floor



Flat	BHK	SBA (Sq.ft)
A	3	2110
B	4	2455
C	4	2490
D	3	2120



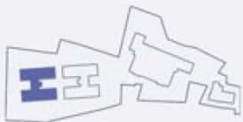


**Block-1**  
**5th, 8th, 11th & 14th Floor Plan**

**BLOCK-1**  
5th, 8th, 11th & 14th floor



Flat	BHK	SBA (Sq.ft)
A	3	2120
B	4	2490
C	4	2455
D	3	2110



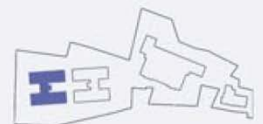
**Block- 1**  
**6th, 9th & 12th Floor Plan**



**BLOCK-1**  
6th, 9th, & 12th floor



Flat	BHK	SBA (Sq. ft)
A	3	2045
B	4	2395
C	4	2395
D	3	2045



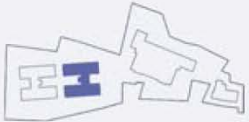
**Block- 2**  
**2nd & 3rd Floor Plan**

**BLOCK-2**

2nd & 3rd floor plan



Flat	BHK	SBA (Sq.ft)
A	3	2045
B	4	2395
D	3	2045





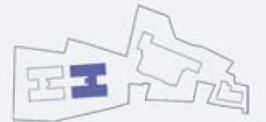
**Block- 2**  
**4th, 7th & 10th Floor Plan**



**BLOCK-2**  
4th, 7th, & 10th floor



Flat	BHK	SBA (Sq.ft)
A	3	2110
B	4	2455
C	4	2490
D	3	2120



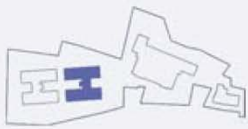
**Block- 2**  
**5th & 8th Floor Plan**

**BLOCK-2**

5th, & 8th floor



Flat	BHK	SBA (Sq.ft)
A	3	2120
B	4	2490
C	4	2455
D	3	2110



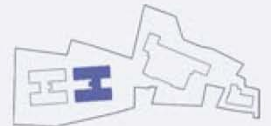
**Block- 2**  
**6th & 9th Floor Plan**



**BLOCK-2**  
6th, & 9th floor



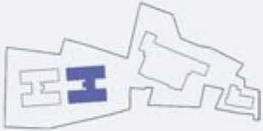
Flat	BHK	SBA (Sq.ft)
A	3	2045
B	4	2395
C	4	2395
D	3	2045





Block- 2- Penthouse  
11th & 12th Floor Plan

**BLOCK-2**  
Floor 11 & 12  
Penthouse



Block- 2- Penthouse  
11th & 12th Floor Plan

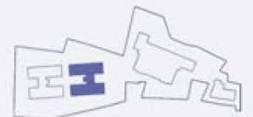


**BLOCK-2**  
Floor 11 & 12  
Penthouse



Flat	SBA (Sq.ft)	OT* BUA
A	2990	420
B	3230	610
C	3195	610
D	2975	420

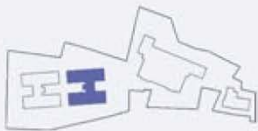
\* open terrace





**Block- 2- Penthouse**  
**13th & 14th Floor Plan**

**BLOCK-2**  
Floor 13 & 14  
Penthouse





**Block- 2 Penthouse**  
**13th & 14th Floor Plan**



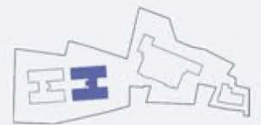
**BLOCK-2**  
Floor 13 & 14  
Penthouse



Floor 14

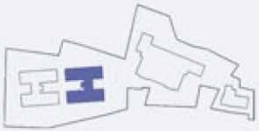
Flat	SBA (Sq.ft)	OT* BUA
A	3361	637
B	3591	765
C	3428	765
D	3222	635

\* open terrace



Block- 2  
Roof Plan

**BLOCK-2**  
Roof Plan





**Block- 3**  
**1st Floor Plan**





**Block- 3**  
**2nd, 5th, 8th, 11th Floor Plan**

**BLOCK-3**

2ND, 5TH, 8TH, 11TH Floor



Flat	BHK	SBA (Sq.ft)
A	4	2280
B	4	2315
C	3	2010
D	3	2010
E	4	2315
F	4	2280



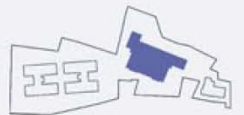
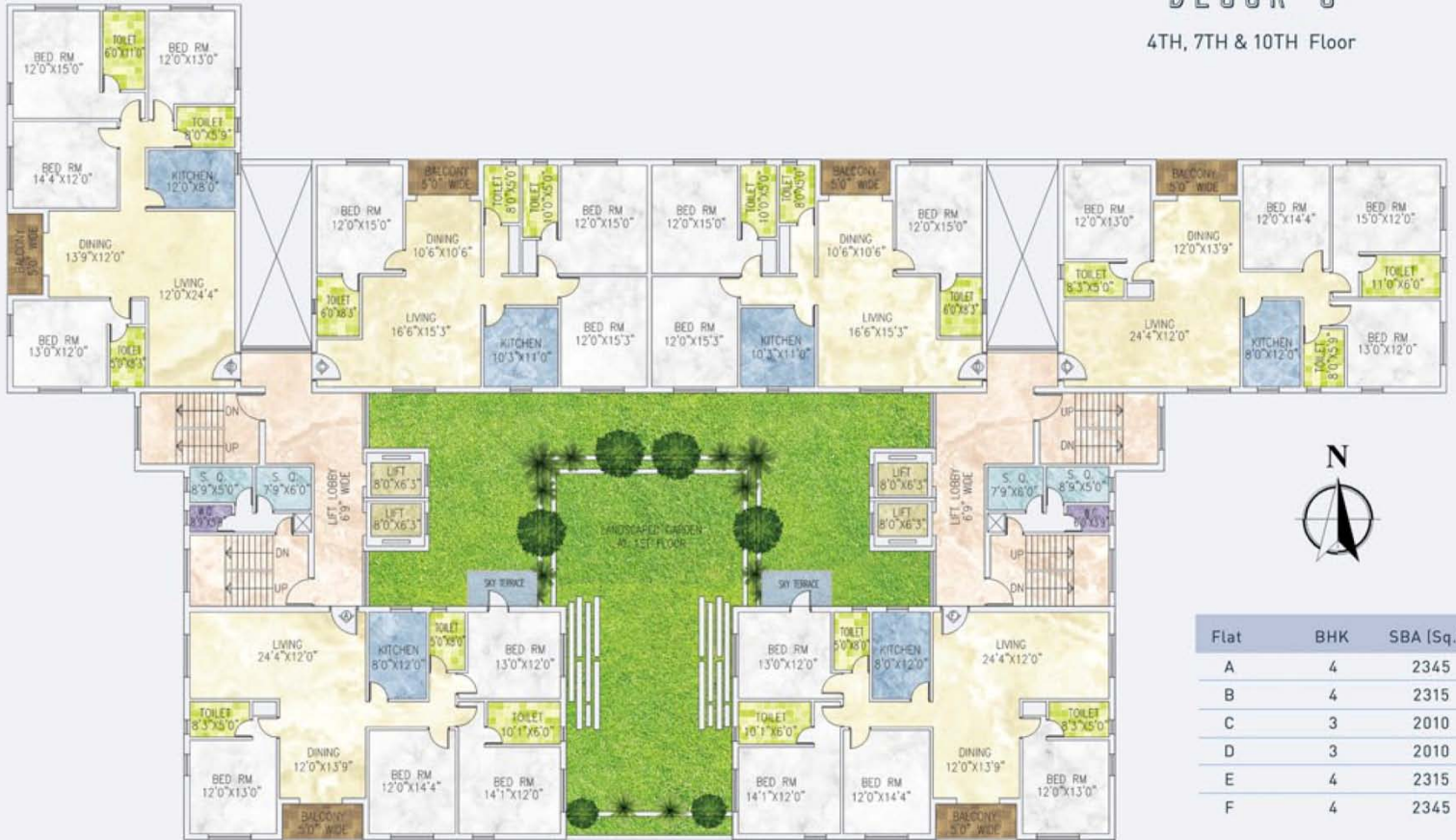
**Block- 3**  
**3rd, 6th, 9th, 12th Floor Plan**



**Block-3**  
**4th, 7th & 10th Floor Plan**

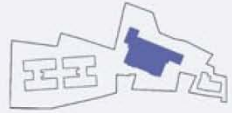
**BLOCK-3**

4TH, 7TH & 10TH Floor





**Block- 3**  
**13th Floor Plan**



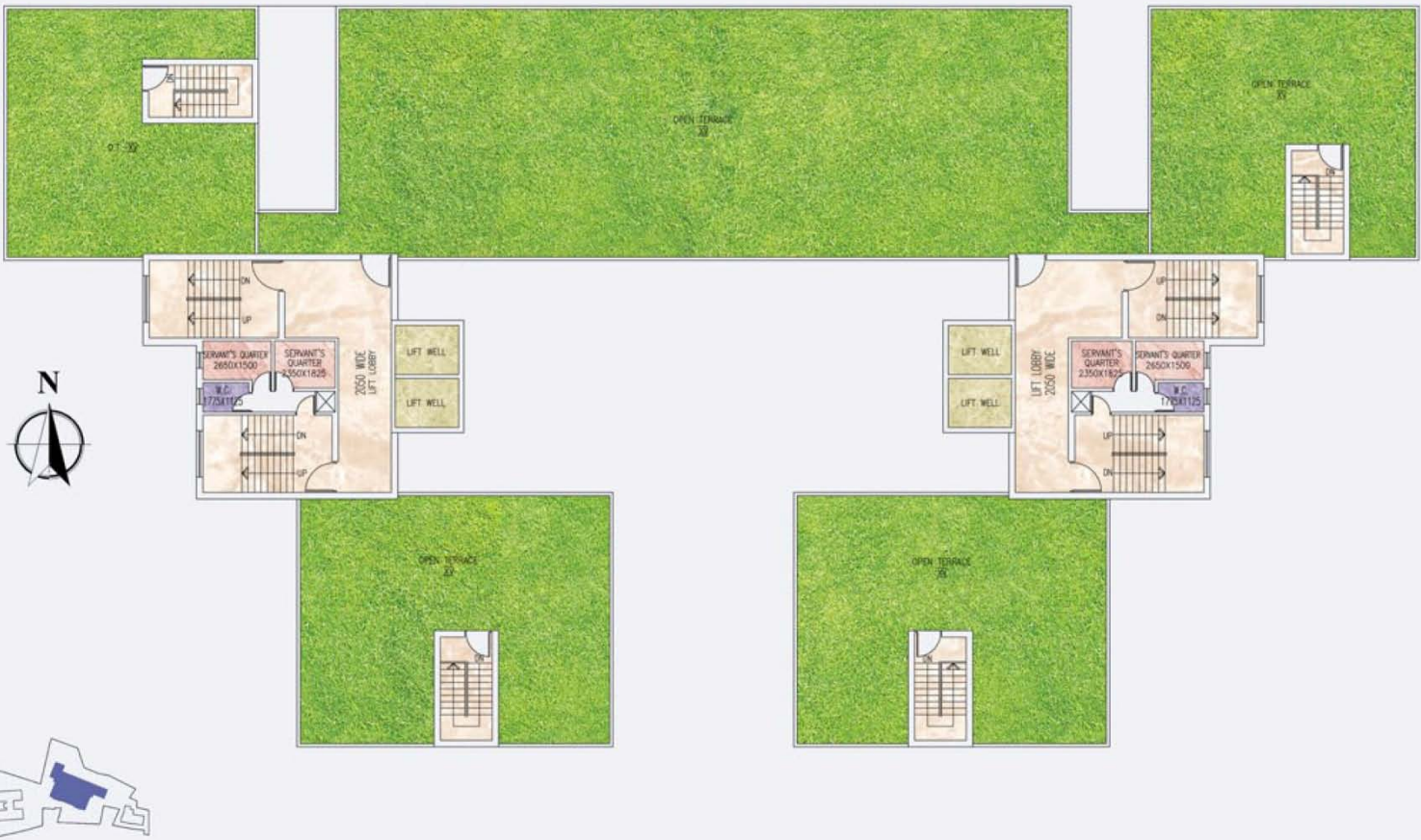
**Block-3**  
**14th Floor Plan**



**Block- 3**  
**Roof Plan**

**BLOCK-3**

Roof Plan





**Block- 3 (Typical Floor Plan)**  
**1st Floor Plan**



**Block- 3 (Typical Floor Plan)**  
2nd, 5th, 8th & 11th Floor



**Block- 3 (Typical Floor Plan)**  
**3rd, 6th, 9th & 12th Floor**

**BLOCK-3**  
Typical Floor Plan  
3rd, 6th, 9th & 12th Floor





**Block- 3 (Typical Floor Plan)**  
4th, 7th & 10th Floor



**Block- 4**  
**1st to 7th Floor Plan**

**BLOCK-4**

1st to 7th floor



Flat	BHK	SBA (Sq.ft)
A	3	1650
B	3	1655



## Developer



Jain Group



12-A, Lord Sinha Road, Shyamkunj Appt.  
Flat # 403, Kolkata 700071 WB

+91 81004 44477



[sales@rabcoestates.com](mailto:sales@rabcoestates.com)