

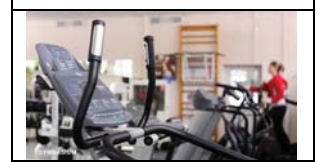


Give Wings  
to your Dream!



## Amenities

- ❖ Landscaped Garden
- ❖ Children's Play Area
- ❖ Gymnasium
- ❖ SPA
- ❖ Library with Wi-Fi
- ❖ Indoor Games Room
- ❖ Security
- ❖ Shuttle Service



## Specifications

- ❖ **Structure:-** Earthquake resistant RCC structure, built using superior quality cement and rebar's.
- ❖ **Wall Finish:-**  
**Exterior Finish:** High quality weather proof paint with decorative finish.  
**Interior Finish:** Smooth Plaster of Paris wall finish.
- ❖ **Staircase and Lobby:-** Wide spacious staircase, elegantly designed Lobby and corridors with high quality marble, kota/tiles.
- ❖ **Elevation:-** A world where simplicity meets modernity
- ❖ **Flooring:-** Quality Vitrified tiles of reputed make in the living room, bedrooms and kitchen
- ❖ **Kitchen:-** Granite top platform with stainless steel sink and anti skid tiles
- ❖ **Bathroom:-** CP fittings of reputed make along with anti-skid tiles on the floors and walls up to door height. Hot and cold water plumbing and western style sanitary fittings.



❖ **Doors:-**

**Main Door:**

Solid and polished flush door with Godrej night latch.  
Good quality flush doors in all other rooms.

**Hardware:** Brass and stainless steel hardware fittings of reputed make

- ❖ **Windows:-** High quality powder coated sliding windows will minimize sound and air pollutants from your living space, facilitating a peaceful existence within the confines of your abode.

- ❖ **Lift:-** High quality lifts of reputed make in each block.

❖ **Electrical and Voice/Data points:-**

Copper wiring of reputed make

MCB of HAVELLS or equivalent make

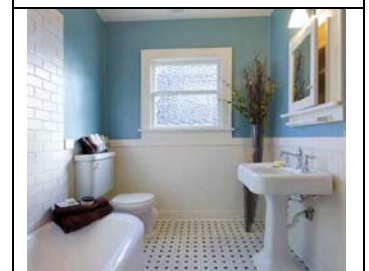
AC point in Master bedroom/Geysers points in bathroom

Adequate light and fan points

Modular switches from ANCHOR or equivalent make.

- ❖ **Power Back Up:-** 24X7 power back up to safe guard you from power outages

- ❖ **Water Supply:-** 24 hours uninterrupted treated water supply



## Location



Proposed Metro	3 mins
School	1 min
Hospital	2 mins
Municipality	2 mins
Chowmatha	2 mins



# Type & Area

## Site Plan



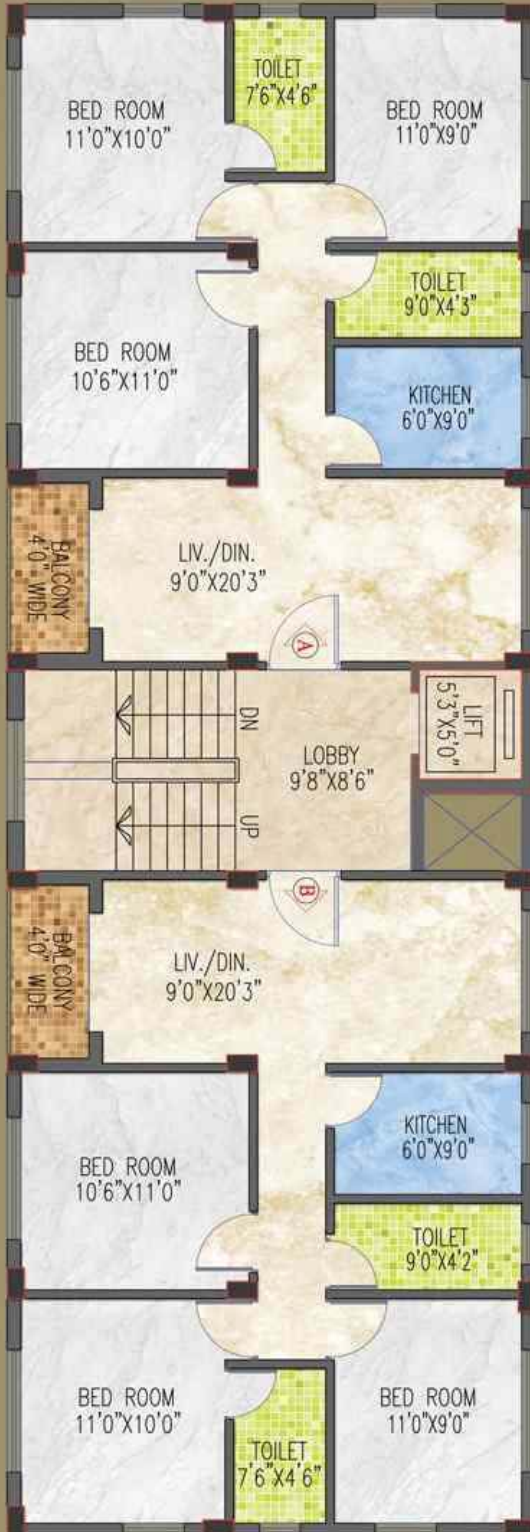
Typical Floor Plan  
1st to 4th Floor (Block- 1)

**TYPICAL FLOOR PLAN  
(1ST TO 4TH)  
BLOCK 1**

SBUA			
BLOCK	TYPE	TOTAL	BHK
BLOCK 1	A	1105	3
	B	860	2
	C	860	2
	D	1105	3
	E	1105	3
	F	860	2
	G	860	2
	H	1105	3



Typical Floor Plan  
1st to 4th Floor (Block- 2 & 7)



**TYPICAL FLOOR PLAN  
(1ST TO 4TH)  
BLOCK 2 & 7**

SBUA

BLOCK	TYPE	TOTAL	BHK
BLOCK 2 & 7	A	1120	3
	B	1120	3



**Typical Floor Plan**  
1st to 4th Floor (Block- 3, 4, 5 & 6)



**TYPICAL FLOOR PLAN**  
(1ST TO 4TH)  
BLOCK 3, 4, 5 & 6

SBUA			
BLOCK	TYPE	TOTAL	BHK
BLOCK 3,4,5&6	A	850	2
	B	850	2
	C	1045	3
	D	1045	3

## Developer



Jain Group



12-A, Lord Sinha Road, Shyamkunj Appt.  
Flat # 403, Kolkata 700071 WB

+91 81004 44477



[sales@rabcoestates.com](mailto:sales@rabcoestates.com)