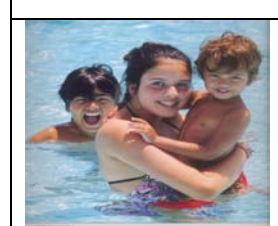
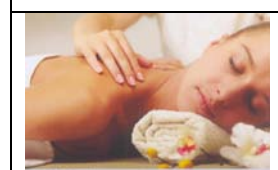




Amenities

- ❖ Squash Court
- ❖ Golf Putting Green
- ❖ Gymnasium
- ❖ Spa & Massage Room
- ❖ Walking & Jogging Trail
- ❖ Infinity Swimming Pool
- ❖ Party Lounge
- ❖ Home Theatre
- ❖ Banquet Hall
- ❖ Cards Room
- ❖ Kids Play Area
- ❖ Table Tennis
- ❖ Pool



Specifications

❖ **Flooring:-**

Vitrified tiles in living room / dining room
High pressure laminate wooden flooring in bedroom
Anti-skid tiles in balcony/ terrace
Ceramic tiles in utility area

❖ **Walls:-**

POP punning with health acrylic emulsion paint in living room/
dining room/ bedroom
Weather proof paint in balcony/ terrace
Ceramic tiles in utility area

❖ **Ceilings:-**

Plastic emulsion paint/ oil bound distemper in living room/ dining
room/ bedroom
Weather proof paint in balcony/ terrace
Oil bound distemper/ part box ceiling in utility area

❖ **Doors:-**

Internal door: Skin door
External door: UPVC/ powder coated or anodized aluminium
doors

❖ **Windows:-**

UPVC/ powder coated or anodized aluminium glazing

❖ **Kitchen:-**

Flooring: Matt finish homogeneous ceramic tiles/ vitrified tiles

Walls: Tiles up to 2 feet above the counter and rest health acrylic emulsion paint

Ceiling: Plastic emulsion paint/ oil bound distemper/ part box ceiling

Skin door/ UPVC/ powder coated or anodized aluminium doors

Others: International style modular kitchen, granite counter top, stainless steel sink and CP fittings

❖ **Toilets:-**

Flooring: Matt finish homogeneous ceramic tiles/ vitrified tiles

Walls: Matt finish homogeneous ceramic tiles

Ceiling: Plastic emulsion paint/ oil bound distemper/ part box ceiling

Doors: Skin doors shutters

Other: High quality chinaware, CP fittings, natural stone counter

❖ **Electrical:-**

Copper electrical wiring in concealed conduits with MCB, fiber optics cable for TV, telephone and premium modular switches

Location

E.M. Bypass – A Landmark that Foretells the Future of Kolkata

Today, one can't stop, but notice the pace at which E.M. Bypass is transforming into the most preferred destination of Kolkata, well connected by rail and road lines with access to major five star hotels, food joints, upcoming Metro and BRTS.



Type & Area

Flat Type- A & B
8th,11th,17th,20th,23rd,26th,29th,32nd Floor

Floor Plans: 8TH, 11TH, 14TH, 17TH, 20TH, 23RD, 26TH, 29TH, 32ND Floor
Flat Type: A & B



Flat Type- A & B
2nd-7th,12th,18th,21st,24th,27th,30th,33rd Floor

Floor Plans: 2ND - 7TH, 9TH, 12TH, 18TH, 21ST, 24TH, 27TH, 30TH, 33RD Floor
Flat Type: A & B



Flat Type- A & B
10th,16th,19th,22nd,25th,28th,31st,34th Floor

Floor Plans: 10TH, 13TH, 16TH, 19TH, 22ND, 25TH, 28TH, 31ST, 34TH Floor

Flat Type: A & B



Flat Type- C & D
2nd-7th, 9th,12th,21st,24th,27th,30th,33rd Floor

Floor Plans: 2ND - 7TH, 9TH, 12TH, 18TH, 21ST, 24TH, 27TH, 30TH, 33RD Floor
Flat Type: C & D



Flat Type- C & D
8th,11th,14th,17th,20th,23rd,26th,29th,32nd Floor

Floor Plans: 8TH, 11TH, 14TH, 17TH, 20TH, 23RD, 26TH, 29TH, 32ND Floor
Flat Type: C & D



Flat Type- C & D
10th,13th,16th,19th,22nd,25th,28th,31st,34th Floor

Floor Plans: 10TH, 13TH, 16TH, 19TH, 22ND, 25TH, 28TH, 31ST, 34TH Floor
Flat Type: C & D



Developer



12-A, Lord Sinha Road, Shyamkunj Appt.

Flat # 403, Kolkata 700071 WB

+91 81004 44477



sales@rabcoestates.com