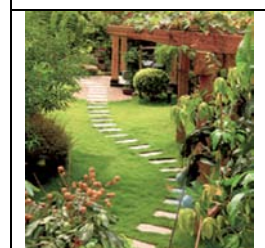
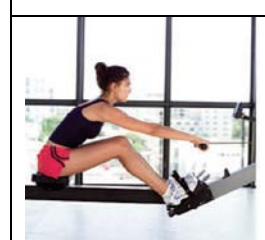
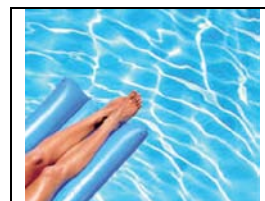




Amenities

❖ Healthcare and Entertainment:-

Air Conditioned Community hall
Indoor Games Room (TT, Chess, Carrom, etc.)
Gymnasium
Toddlers Swimming Pool
Landscape Garden
Children's' Play Area



❖ Others:-

Adequate capacity standby generator for common areas and services
Generator back-up load BHK wise:
2BHK-500W; 2.5BHK-600W;
3BHK-750W; 4 BHK - 1000W
Fire-fighting equipment and extinguishers as required by law
Elevators of (OTIS/ KONE / MISTIBUSHI / equivalent make)
Centrax cum Telephone Exchange Intercom System or Equivalent, from Service Provider BSNL / or Any other Service Provide
In-house solid and water waste management system

❖ Security:-

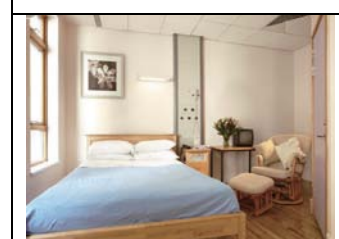
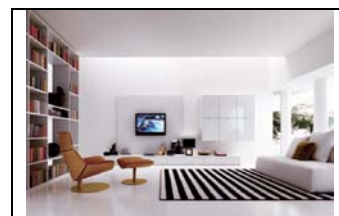
Closed Circuit T.V. at the ground floor level with security room
All the important points duly manned by well trained security personnel / guards

❖ Water Management:-

24-hour water supply
Water filtration plant

Specifications

- ❖ **Foundation:-** Reinforced concrete cement structure
- ❖ **Wall Finish:-**
 - Interior:** Conventional brickwork with Plaster of Paris
 - Exterior:** Combination of cladding and / or high quality cement/textured paint
- ❖ **Flooring:-**
 - Master Bedroom:** Vitrified tiles/Anti-skid ceramic tiles
 - Other Bedrooms:** Vitrified tiles/Anti-skid ceramic tiles
 - Living/Dining:** Vitrified tiles
- ❖ **Kitchen:-**
 - Anti-skid tiles
 - Granite platform with honed edges
 - Stainless steel sink
 - Dado of ceramic tiles up to 2 ft above the counter/platform
 - Electrical points for refrigerator, water filter and exhaust fan
 - Provision for exhaust
- ❖ **Toilet:-**
 - Anti-skid ceramic tiles for flooring
 - Wall tiles up to door height
 - Sanitary ware of Parryware/Hindware or equivalent make
 - CP fittings of Jaguar/Ess Ess/Hindware or equivalent make
 - Electrical points for geyser and exhaust fan
 - Plumbing provision for hot/cold water line
- ❖ **Doors and Windows:-**
 - Door frame: Made of seasoned and treated wood
 - Main door: Solid core flush doors with decorative brass handles
 - Main door fittings: Godrej night latch and eyepiece
 - Internal doors: Solid core flush doors with stainless steel locks
 - Windows: Fully glazed anodised/powder coated aluminum windows
- ❖ **Electricals:-**
 - AC points in living, dining and all bedrooms
 - Cable TV, telephone and broadband wiring in living / dining
 - Adequate 15 Amp and 5 Amp electrical points in all bedrooms, living/dining, kitchen and toilets
 - Concealed copper wiring with central MCB of reputed brands
 - Door bell point at the main entrance door
 - Modular switches of reputed high-end brands



Location



Type & Area

Typical Floor Layout



Typical Floor Layout

Block- 1
Typical Floor Plan

Block 1 (Typical Floor Plan)



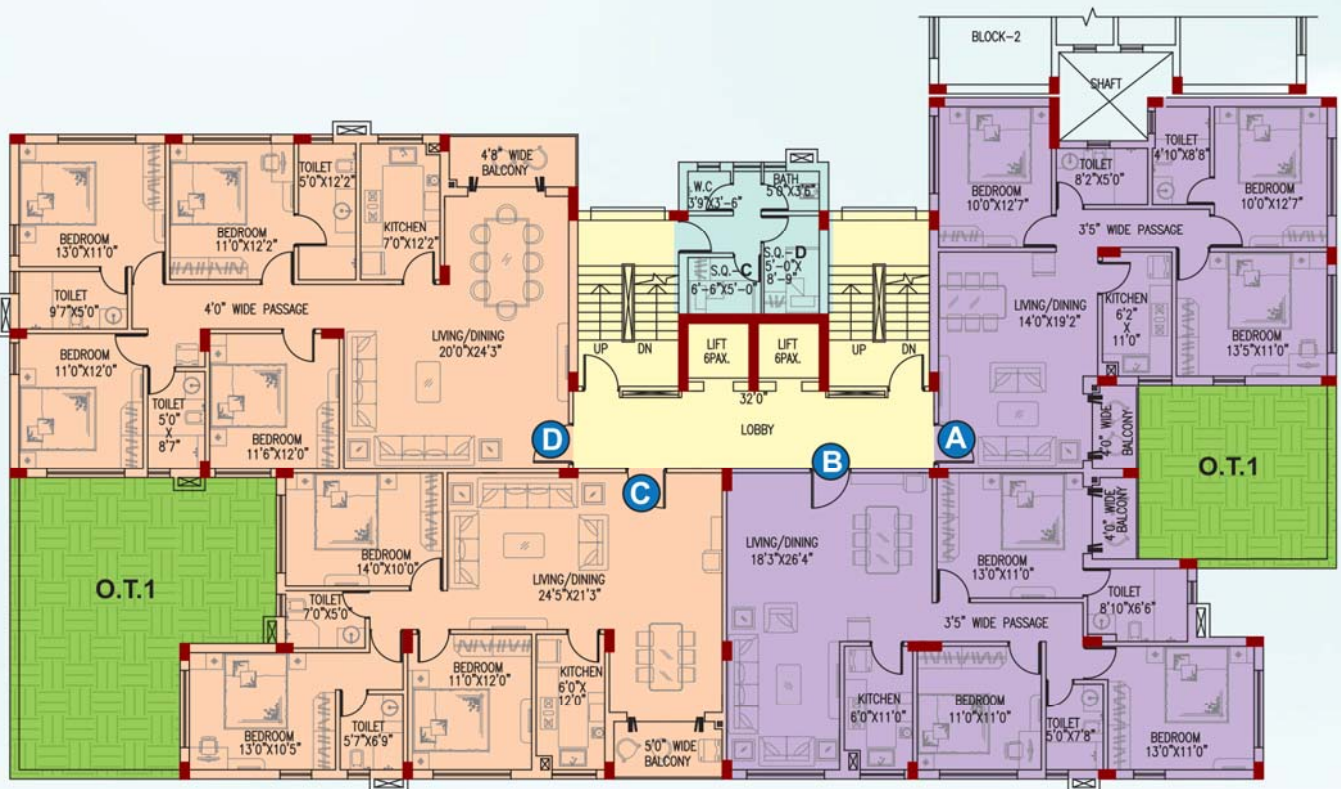
BLOCK-1

Flat Name	Flat Type	Superbuilt Area (Sq. Ft)
A	4B3T	2,064
B	3B3T	1,642
C	3B3T	1,753
D	3B3T+STUDY	1,831
E	2B+STUDY	1,113



Block- 1A
Typical Floor Plan

Block 1A (Typical Floor Plan)



BLOCK-1A

Flat Name	Flat Type	Superbuilt Area (Sq. Ft)
A	3B2T	1,340
B	3B2T	1,538
C	3B2T	1,659
D	4B3T	2,112



Block- 1B
Typical Floor Plan

Block 1B (Typical Floor Plan)



BLOCK-1B

Flat Name	Flat Type	Superbuilt Area (Sq. Ft)
A	4BHK	2,444
B	4BHK	2,321



Block- 2
Typical Floor Plan

Block 2 (Typical Floor Plan)



BLOCK-2

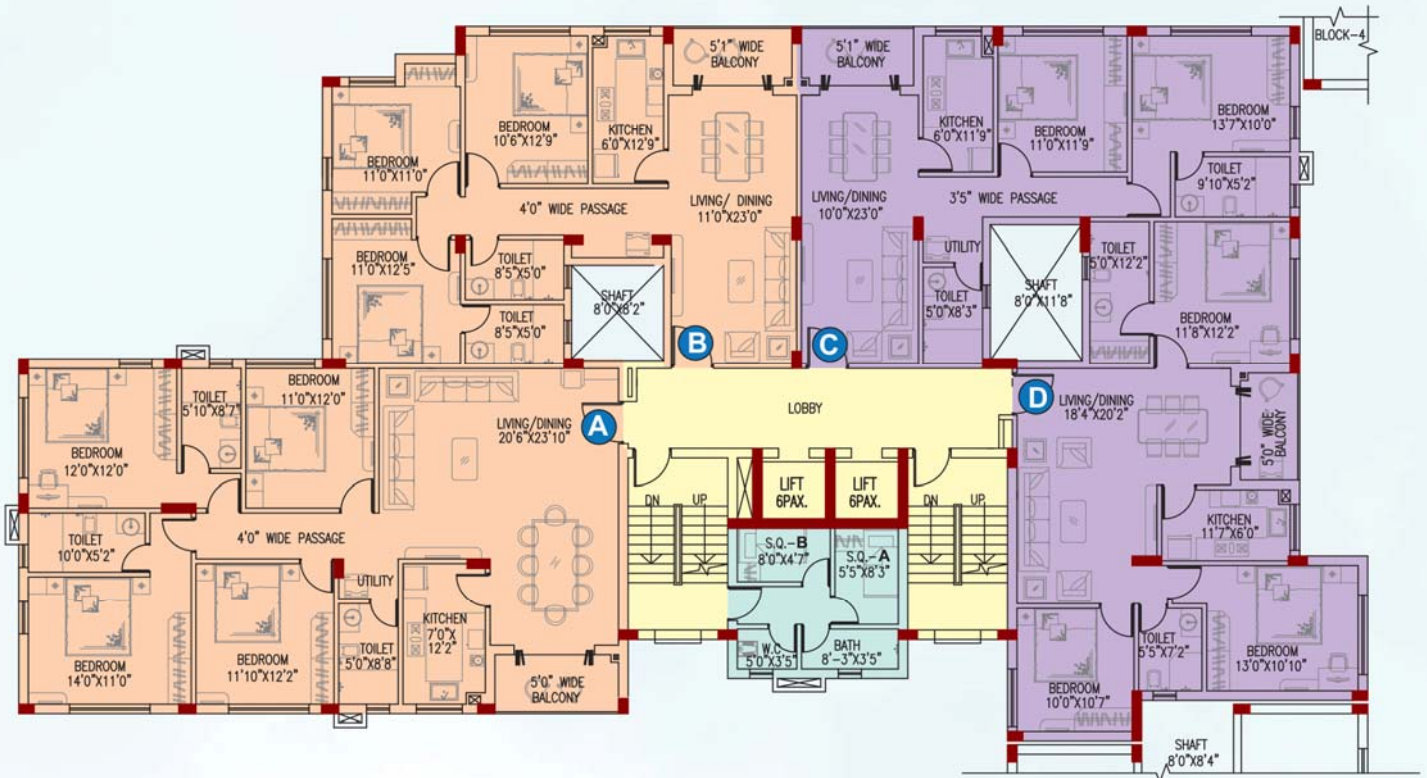
Flat Name	Flat Type	Superbuilt Area (Sq. Ft)
A	4B3T	1,972
B	3B2T	1,510
C	2B2T	1,071

*Block-2 Servants' Quarter will be allocated in a different block. Servants' Quarter area is not included in the super built-up area.



Block- 3
Typical Floor Plan

Block 3 (Typical Floor Plan)

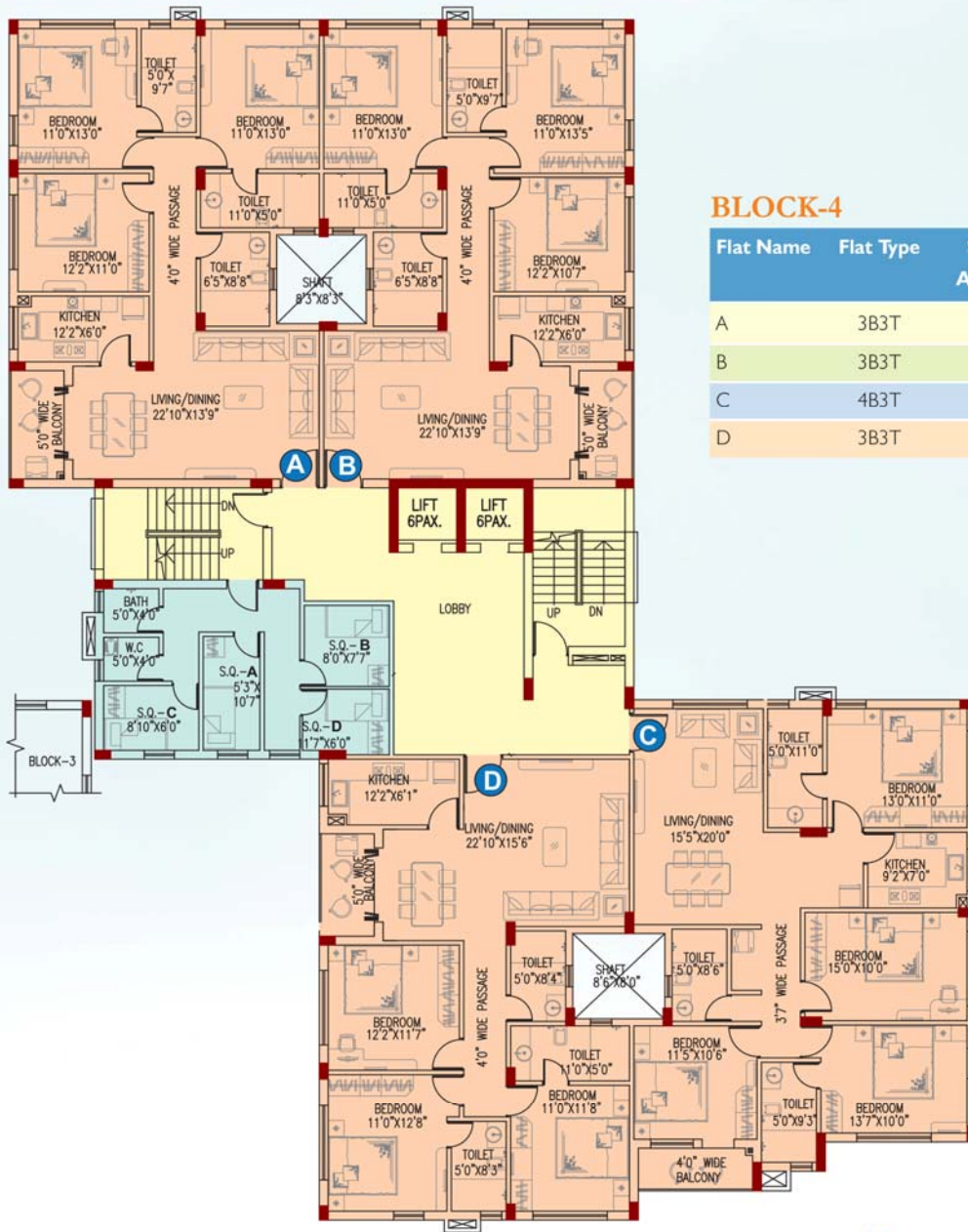


BLOCK-3

Flat Name	Flat Type	Superbuilt Area (Sq. Ft)
A	4B3T	2,197
B	3B2T	1,535
C	2B2T	1,203
D	3B2T	1,384

Block- 4
Typical Floor Plan

Block 4 (Typical Floor Plan)



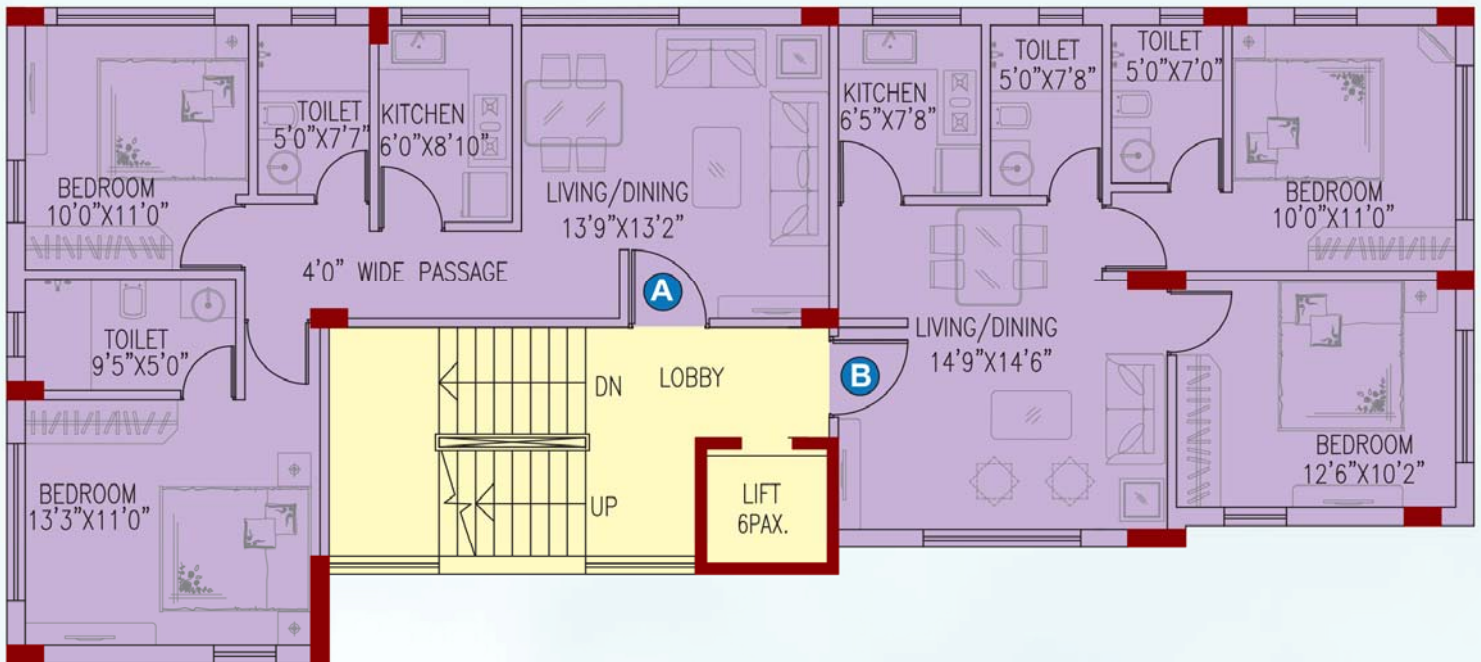
BLOCK-4

Flat Name	Flat Type	Superbuilt Area (Sq. Ft)
A	3B3T	1,733
B	3B3T	1,740
C	4B3T	1,911
D	3B3T	1,685



Block- 4A
1st Floor Plan

Block 4A (First Floor Plan)



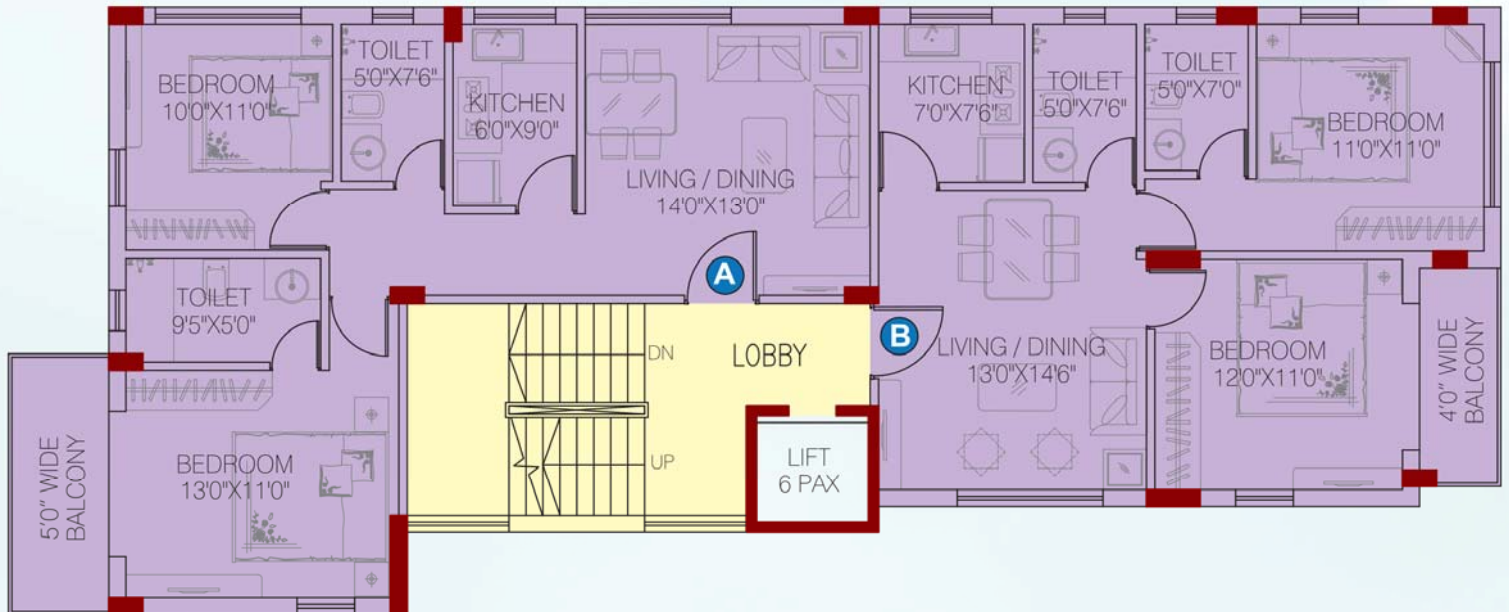
BLOCK-4A (FIRST FLOOR)

Flat Name	Flat Type	Superbuilt Area (Sq. Ft)
A	2BHK	973
B	2BHK	888



Block- 4A
2nd-5th Floor Plan

Block 4A (2nd-5th Floor Plan)



BLOCK-4A (2nd-5th FLOOR)

Flat Name	Flat Type	Superbuilt Area (Sq. Ft)
A	2BHK	1,058
B	2BHK	951



Block- 5
Typical Floor Plan

Block 5 (Typical Floor Plan)

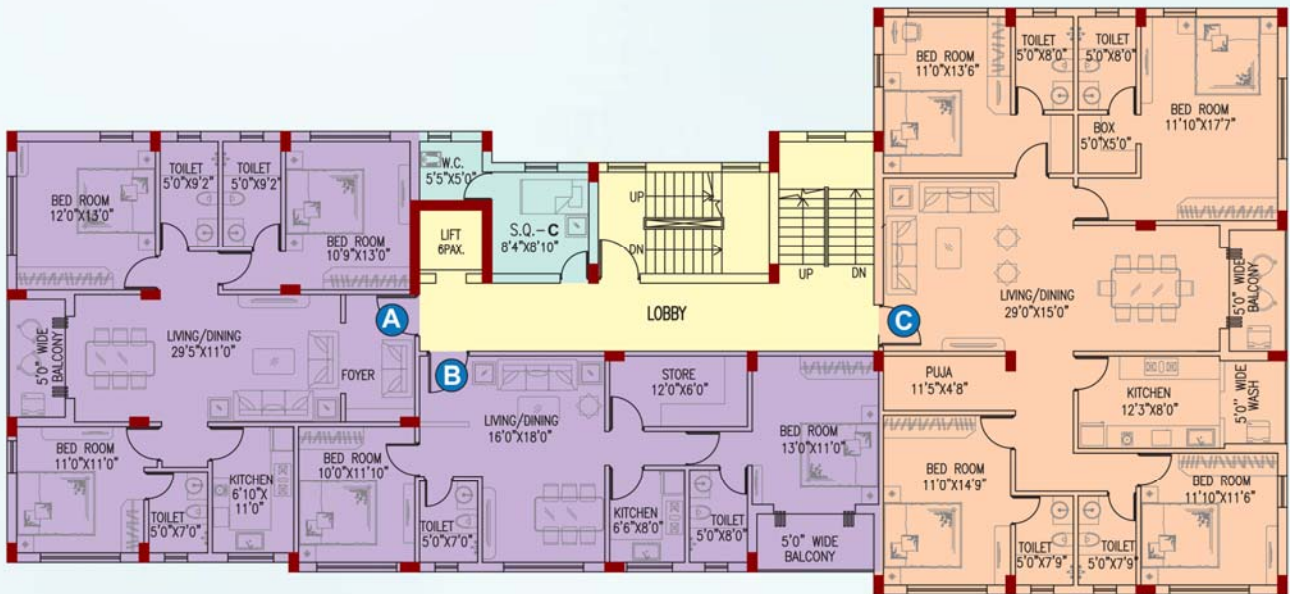


BLOCK-5

Flat Name	Flat Type	Superbuilt Area (Sq. Ft)
A	3B3T	1,649
B	3B3T	1,759
C	3B3T	1,743

Block- 5A
Typical Floor Plan

Block 5A (Typical Floor Plan)



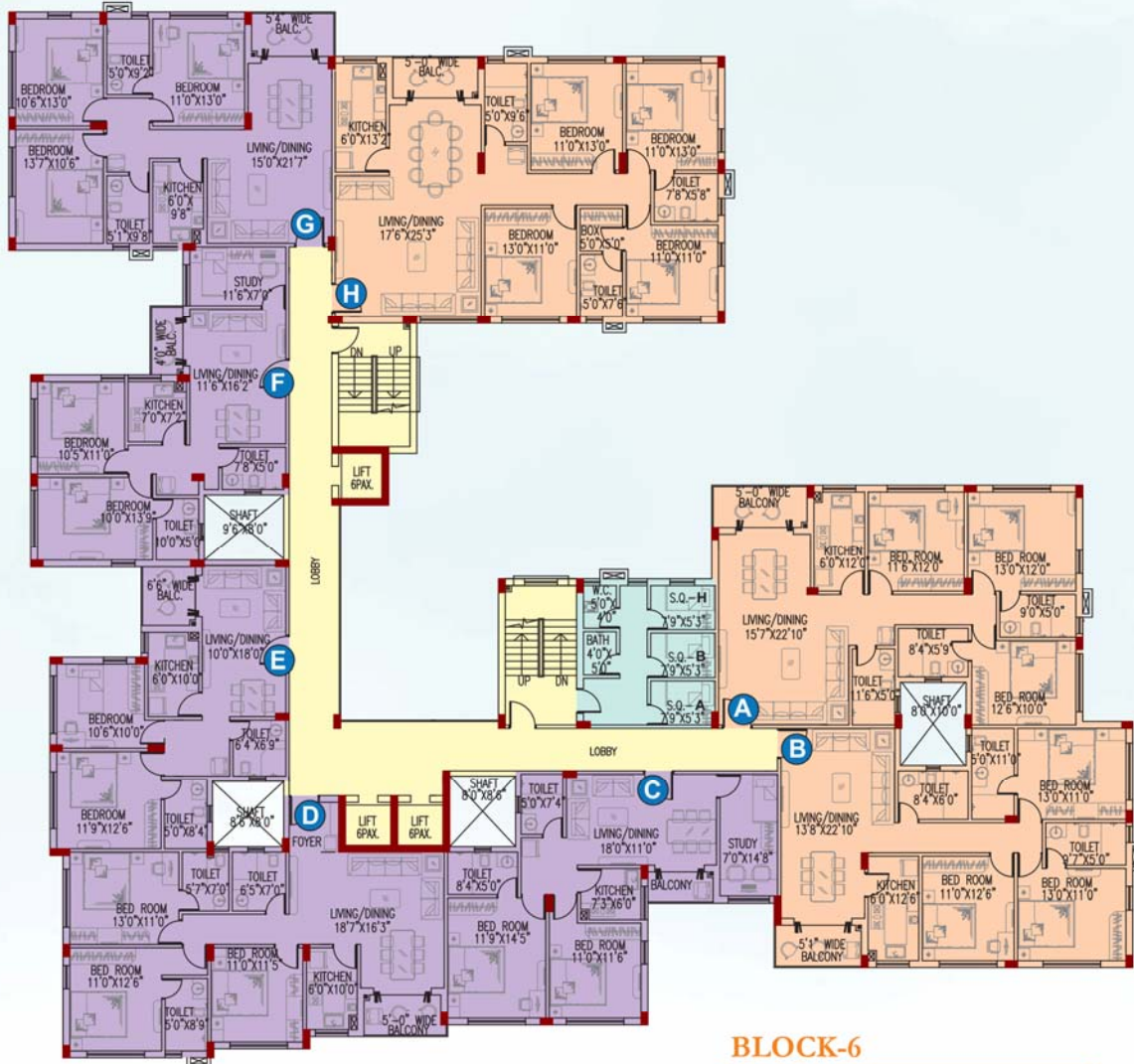
BLOCK-5A

Flat Name	Flat Type	Superbuilt Area (Sq. Ft)
A	3BHK	1,560
B	2.5 BHK	1,169
C	4 BHK	2,484



Block- 6
Typical Floor Plan

Block 6 (Typical Floor Plan)



BLOCK-6

Flat Name	Flat Type	Superbuilt Area (Sq. Ft)
A	3B3T	1,733
B	3B3T	1,676
C	2B2T+STUDY	1,186
D	3B3T	1,491
E	2B2T	1,028
F	2B2T+STUDY	1,109
G	3B3T	1,430
H	4B3T	2,083

Developer



Architect



12-A, Lord Sinha Road, Shyamkunj Appt.
Flat # 403, Kolkata 700071 WB
☎ +91 81004 44477
📧 sales@rabcoestates.com