



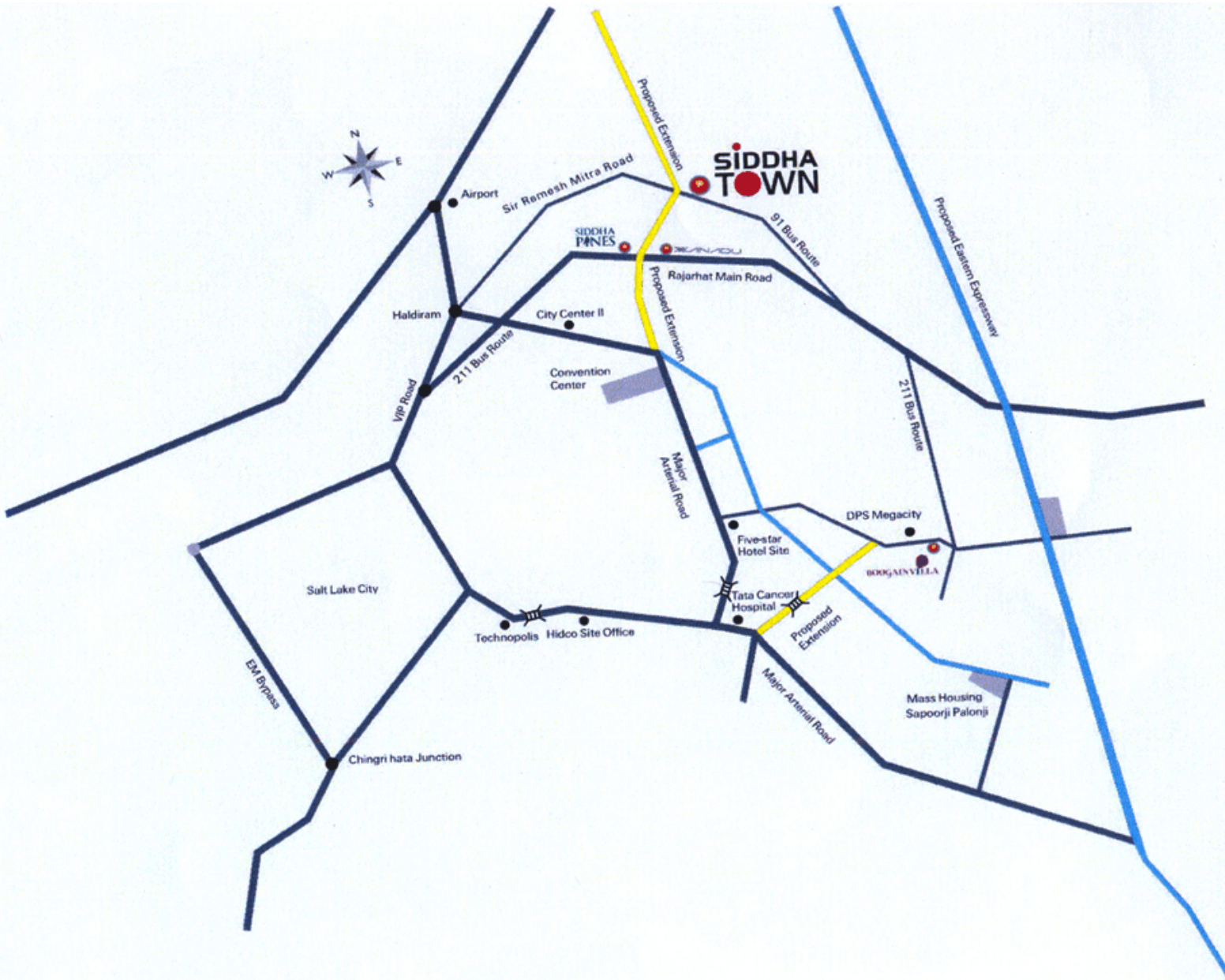
## Amenities

- ❖ Well decorated Lobby
- ❖ Landscaped Green Area
- ❖ Childrens Play area
- ❖ Residents Club
- ❖ Swimming Pool
- ❖ Gym
- ❖ Library
- ❖ Community Hall
- ❖ Indoor Outdoor Home
- ❖ Yoga/ Meditation Room
- ❖ Intercom
- ❖ Cable TV
- ❖ Broadband Connection
- ❖ 24 Hrs Water Supply
- ❖ Elevators
- ❖ Visitors Car Parking

## Specifications

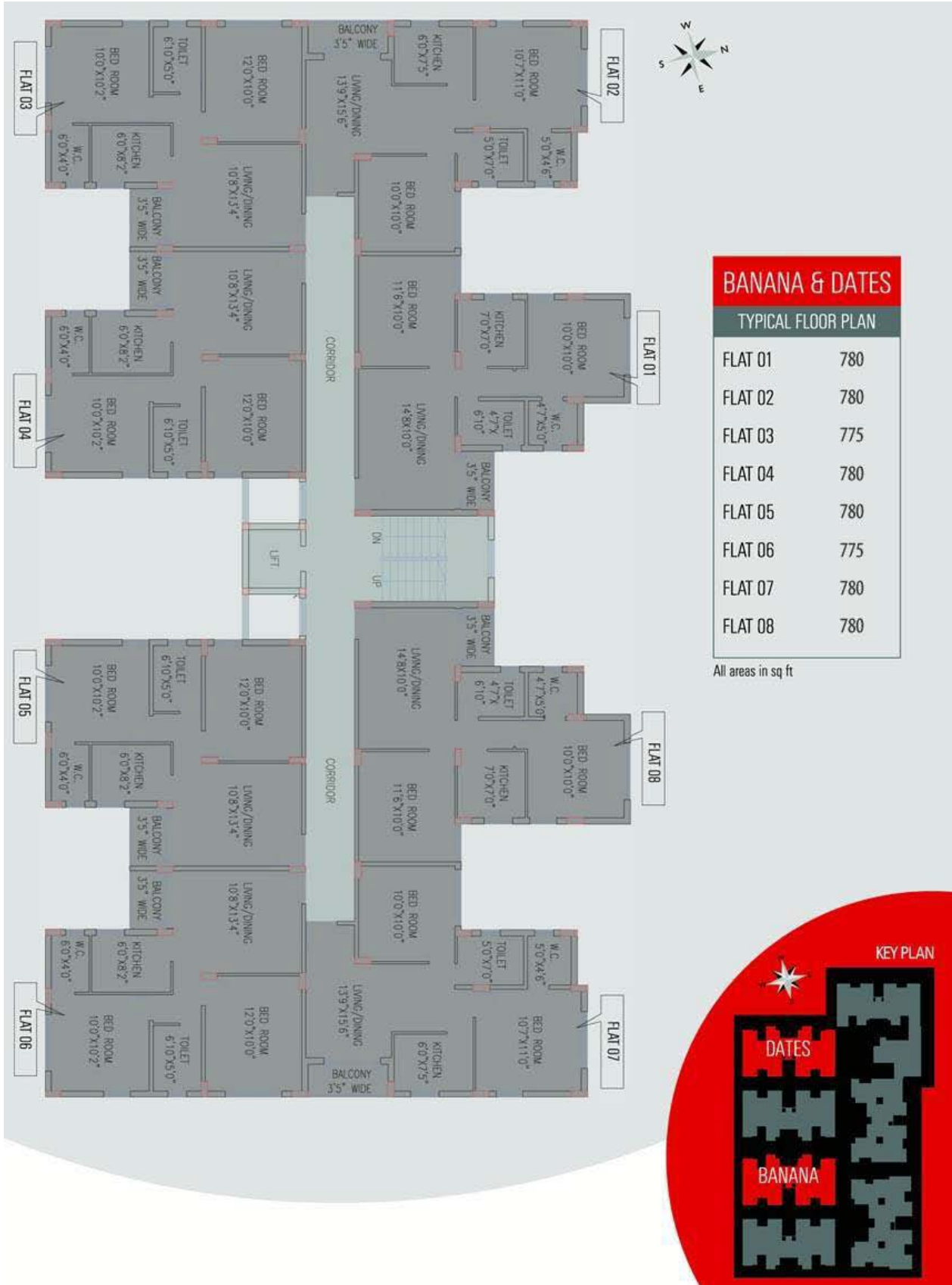
- ❖ **Structure:-** Earthquake resistant RCC framed construction with infill brick walls.
- ❖ **Internal Walls:-** Cement plastering overlaid with smooth, impervious plaster-of-Paris
- ❖ **Doors:-** Doors with tough timber frames and solid-core flush shutters.
- ❖ **Windows:-** Aluminum frames with fully glazed shutters and superior quality fittings.
- ❖ **Flooring:-** Vitrified tile flooring in all Bedrooms, Living/Dining Room and Common Areas
- ❖ **Kitchen:-** Vitrified/Ceramic tiles, Counter Tops, Granite with steel sink with draining board, Dados Ceramic tiles up to a height of 2 feet from the granite top.
- ❖ **Toilet:-** Floor Ceramic tile flooring, Dados Ceramic tiles up to a height of 7 feet.
- ❖ **Sanitaryware:-** White, high quality porcelain fittings of Parryware or equivalent. Chromium-plated fittings of Jaquar or equivalent. Geysers in all bathrooms and one washing machine point.
- ❖ **Electricals:-** Superior quality concealed copper wiring with the latest modular switches and miniature circuit breakers. TV socket and broadband connection.
- ❖ **Telephone Wiring:-** Central distribution box at ground floor with a network of in-built telephone wiring to each apartment, with provision for outlet points in the master bedroom and other areas of the apartment.
- ❖ **Exterior:-** Latest weatherproof non-fading exterior finish of the highest quality.

## Location

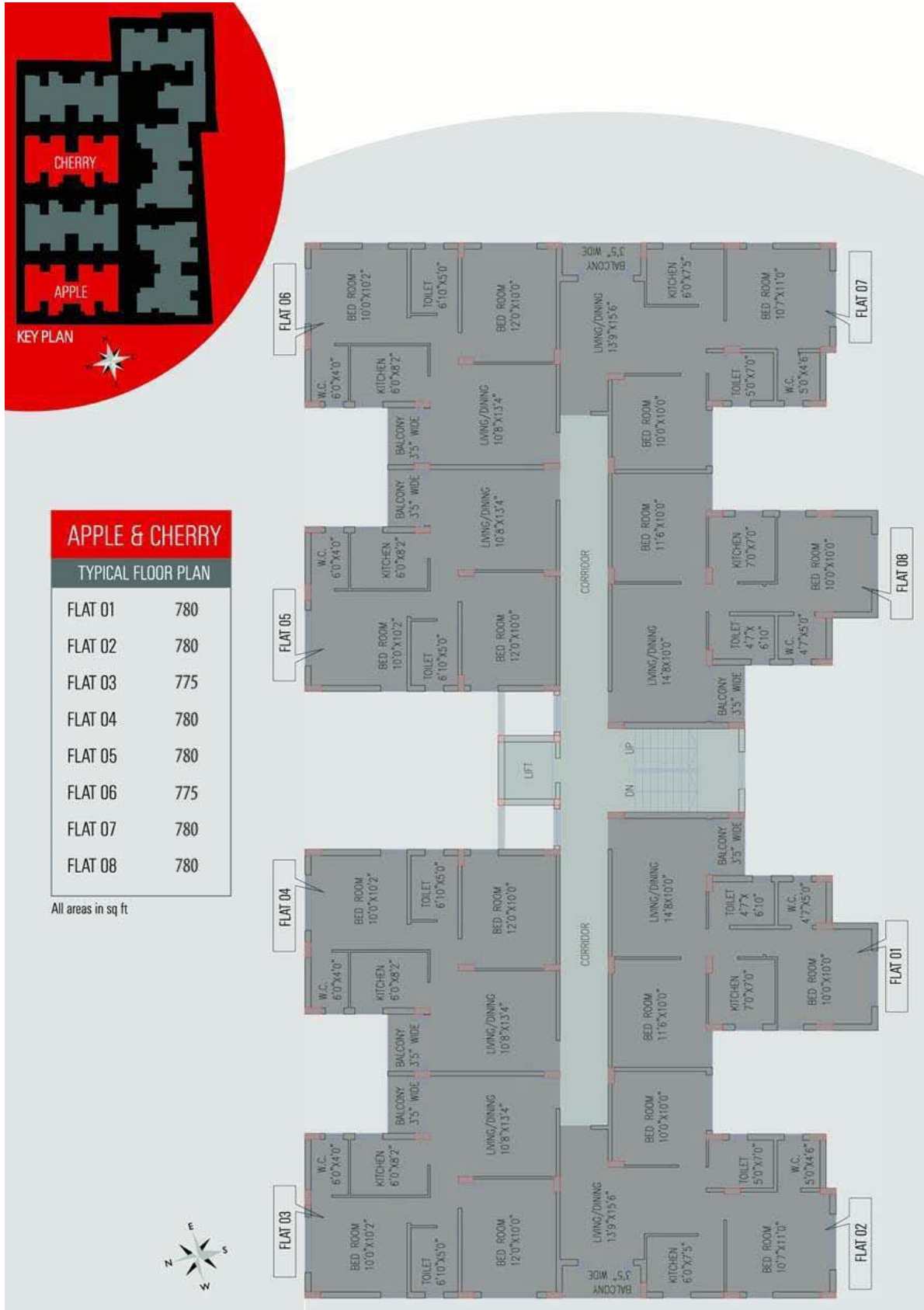




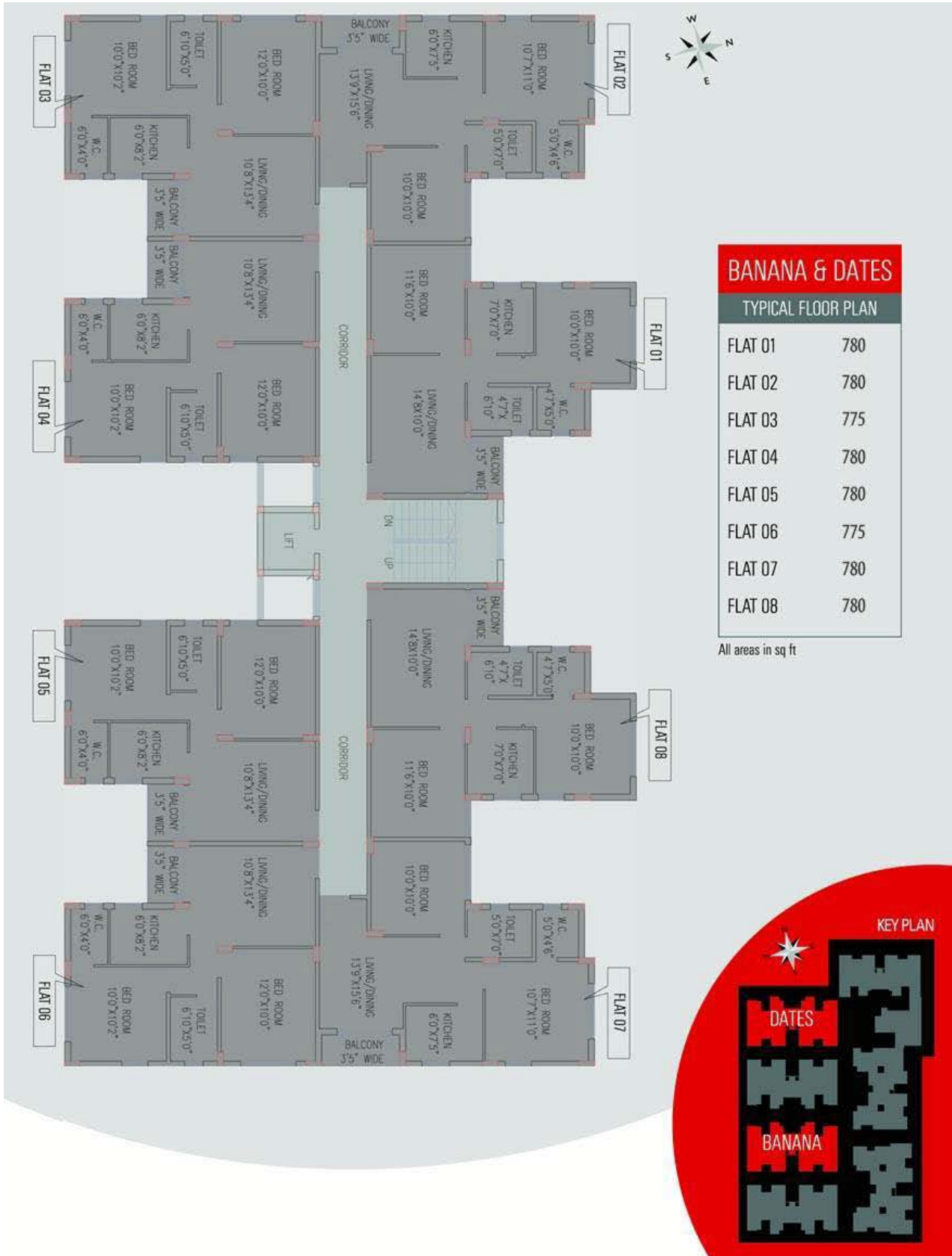
Cluster- 1 (Banana)



Cluster- 1 (Cherry)

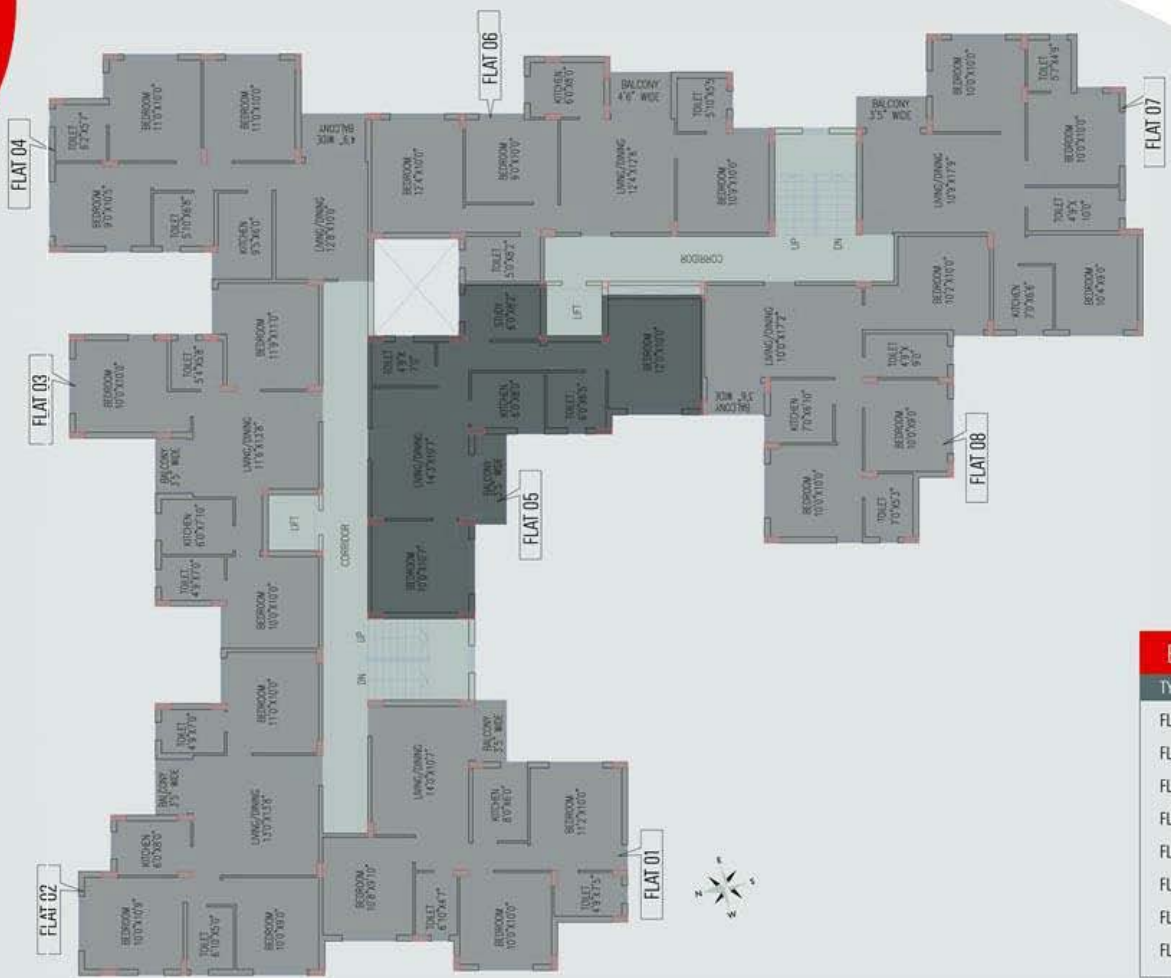


Cluster- 1 (Dates)





Cluster- 1 (Elderberry)



ELDERBERRY	
TYPICAL FLOOR PLAN	
FLAT 01	975
FLAT 02	960
FLAT 03	970
FLAT 04	965
FLAT 05	980
FLAT 06	1015
FLAT 07	1005
FLAT 08	1000

All areas in sq ft

Cluster- 1 (Fig)

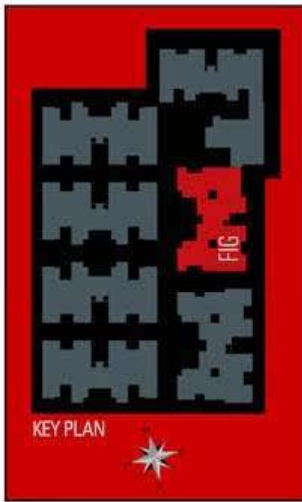
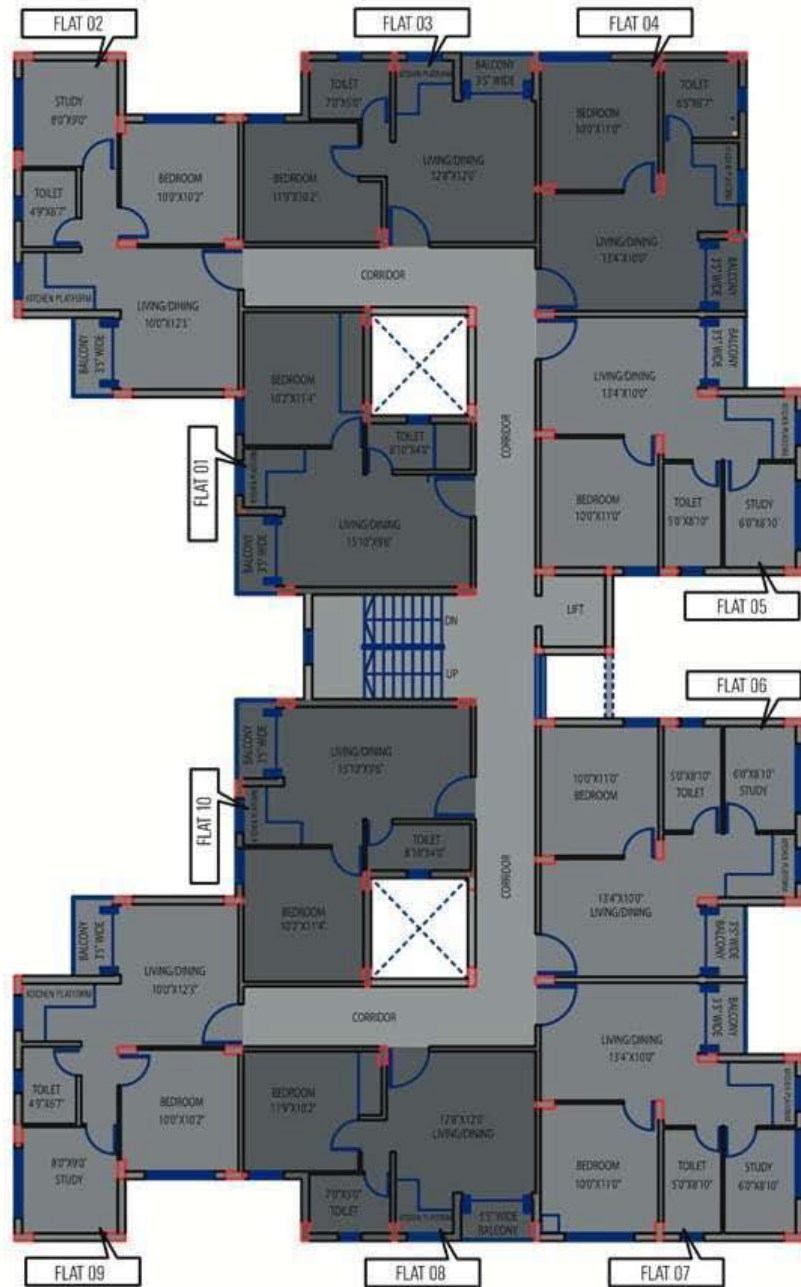
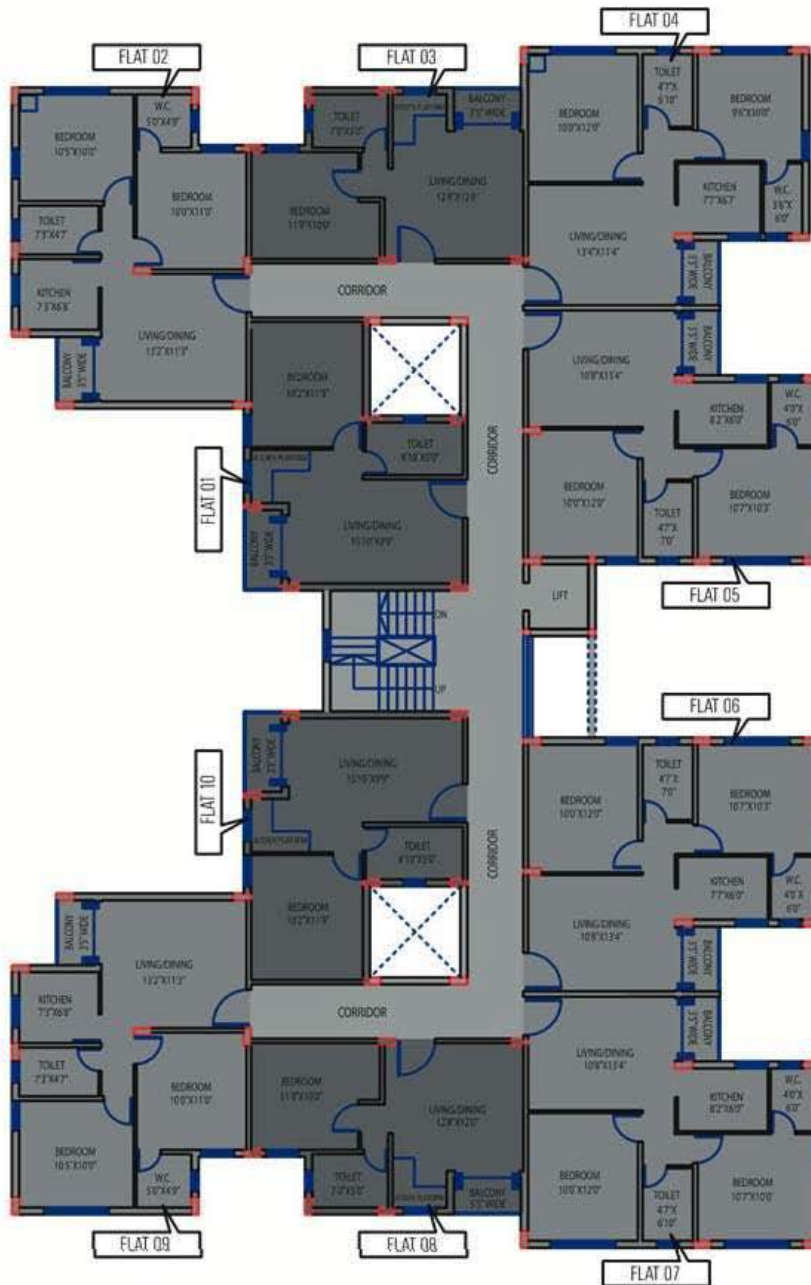


FIG	
TYPICAL FLOOR PLAN	
FLAT 01	570
FLAT 02	660
FLAT 03	540
FLAT 04	545
FLAT 05	655
FLAT 06	655
FLAT 07	650
FLAT 08	540
FLAT 09	660
FLAT 10	570

All areas in sq ft

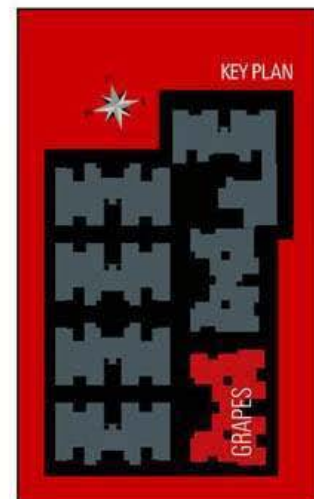


Cluster- 1 (Grapes)

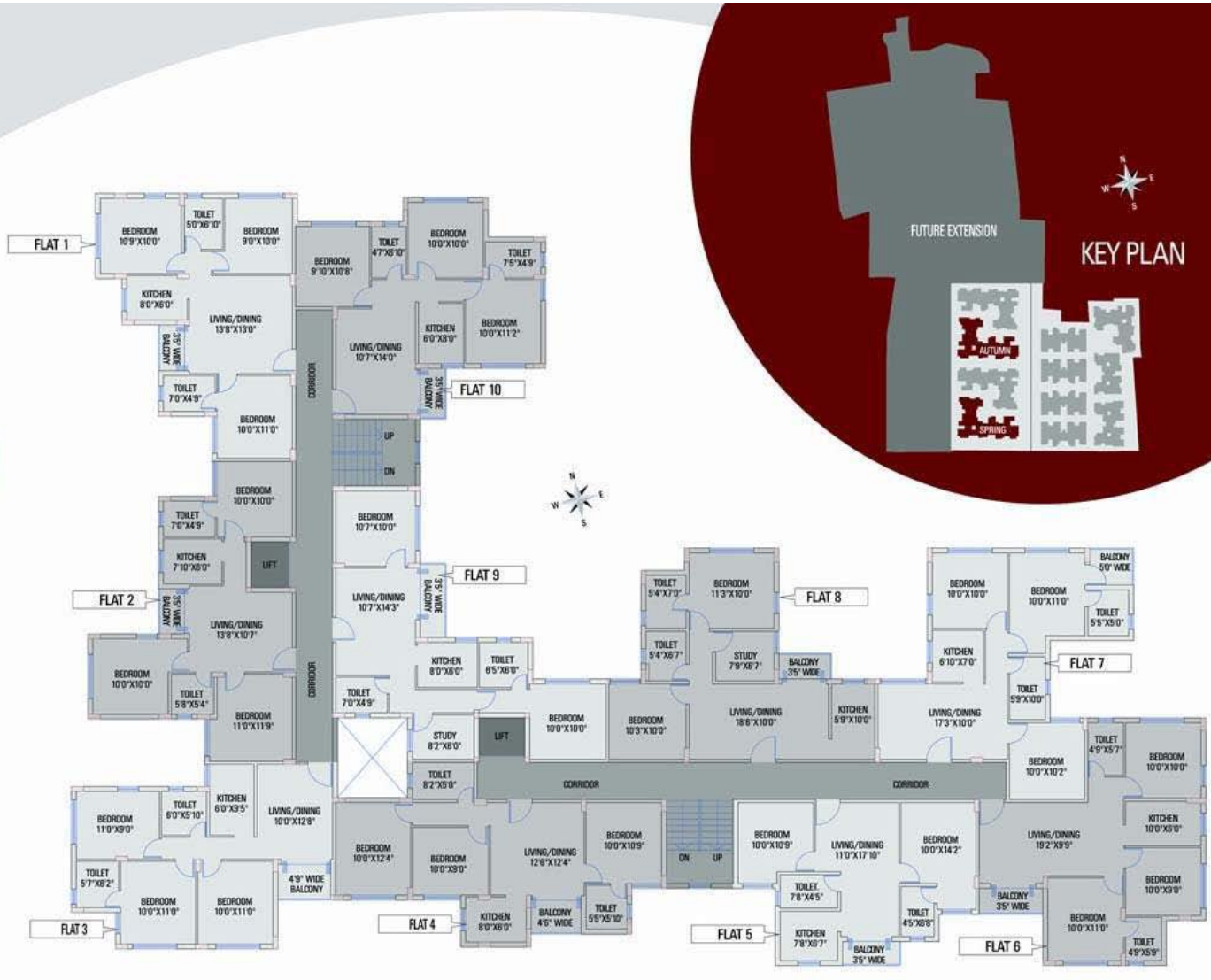


GRAPES	
TYPICAL FLOOR PLAN	
FLAT 01	595
FLAT 02	815
FLAT 03	530
FLAT 04	795
FLAT 05	810
FLAT 06	810
FLAT 07	795
FLAT 08	530
FLAT 09	815
FLAT 10	595

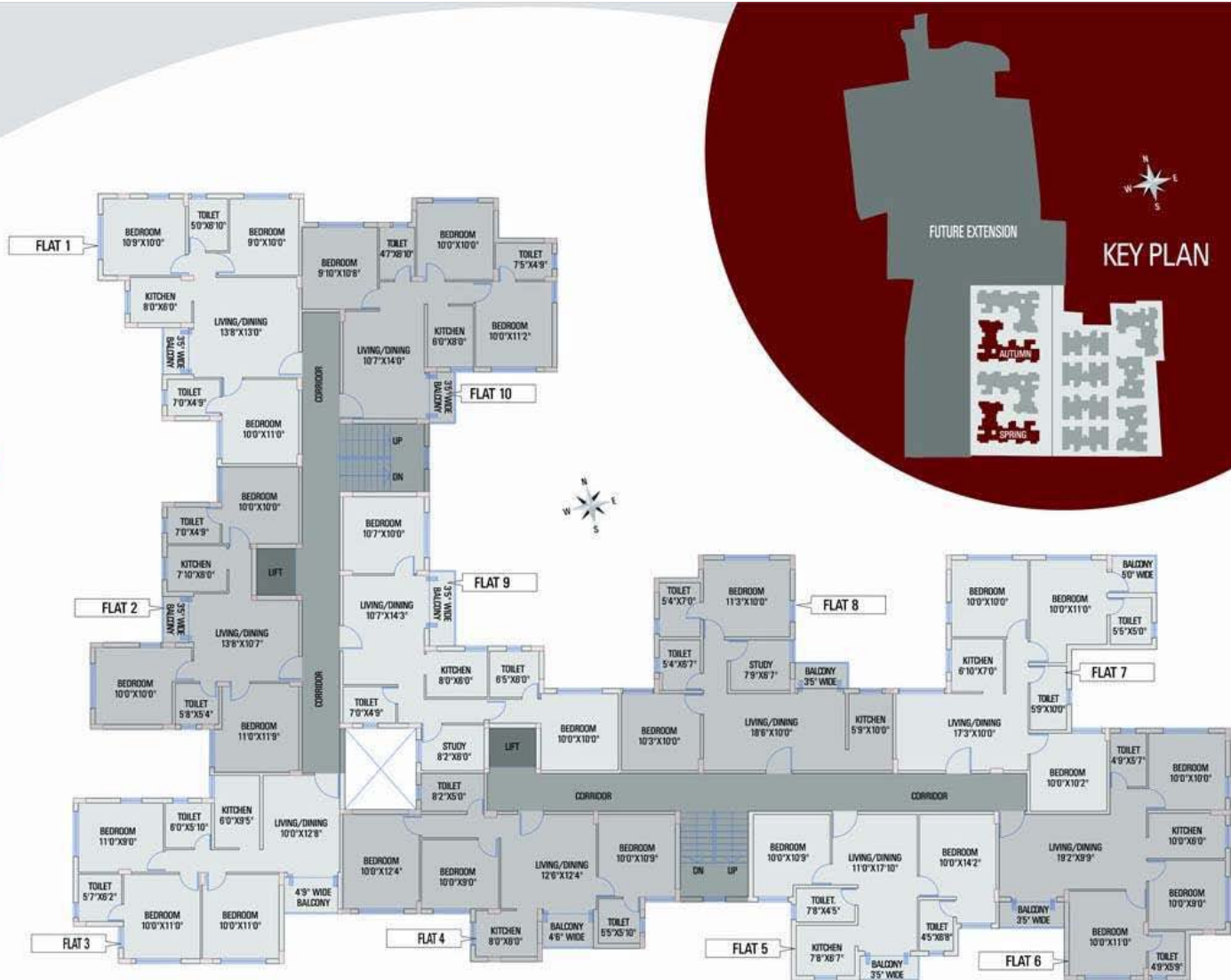
All areas in sq ft



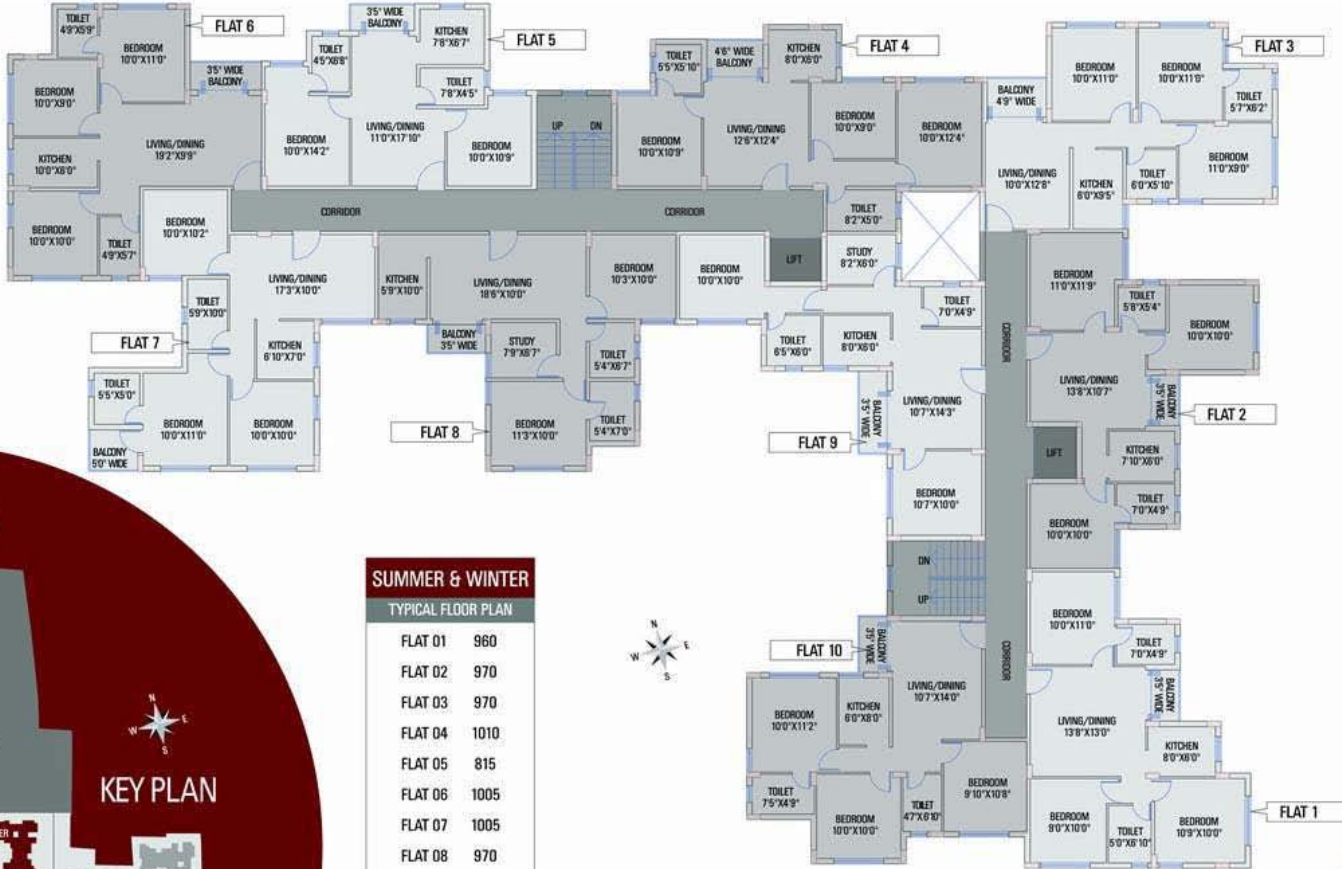
Cluster-2 (Autumn)



Cluster- 2 (Spring)



Cluster- 2 (Summer)

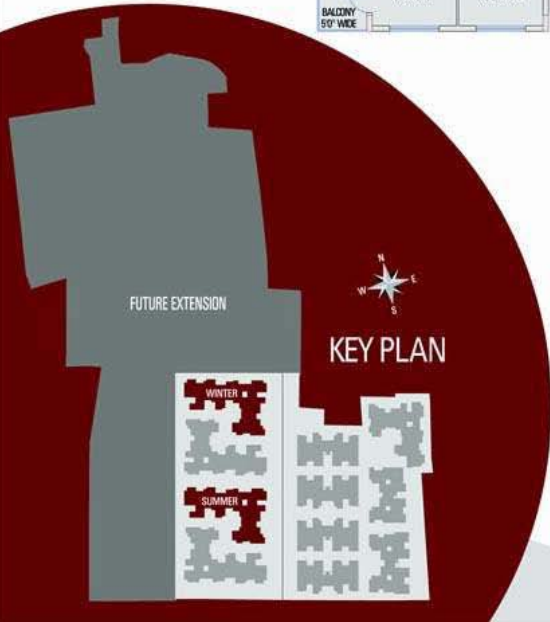


**SUMMER & WINTER**

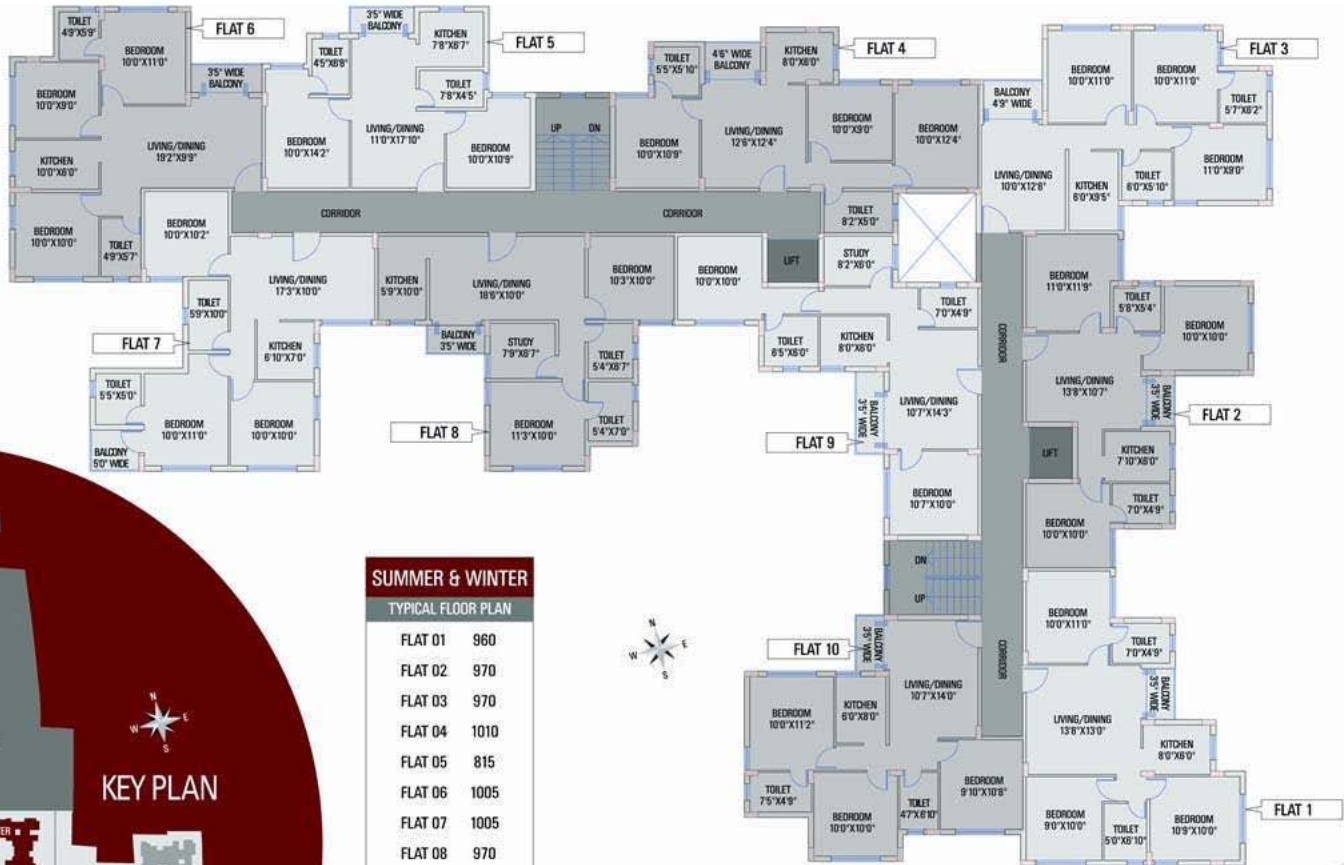
TYPICAL FLOOR PLAN

FLAT 01	960
FLAT 02	970
FLAT 03	970
FLAT 04	1010
FLAT 05	815
FLAT 06	1005
FLAT 07	1005
FLAT 08	970
FLAT 09	955
FLAT 10	975

All areas in sq ft



Cluster- 2 (Winter)

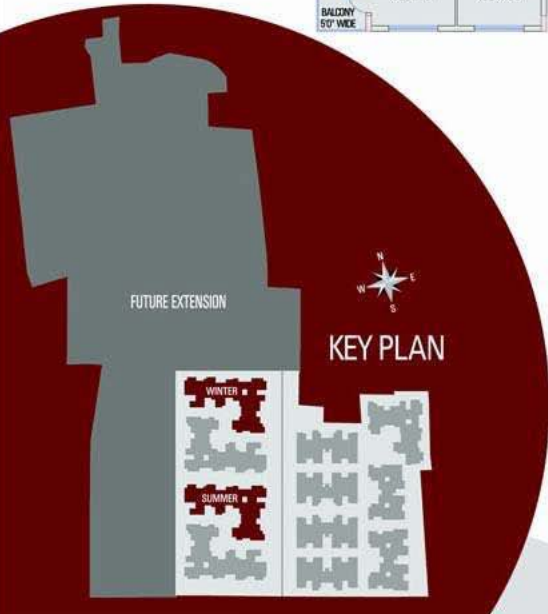


**SUMMER & WINTER**

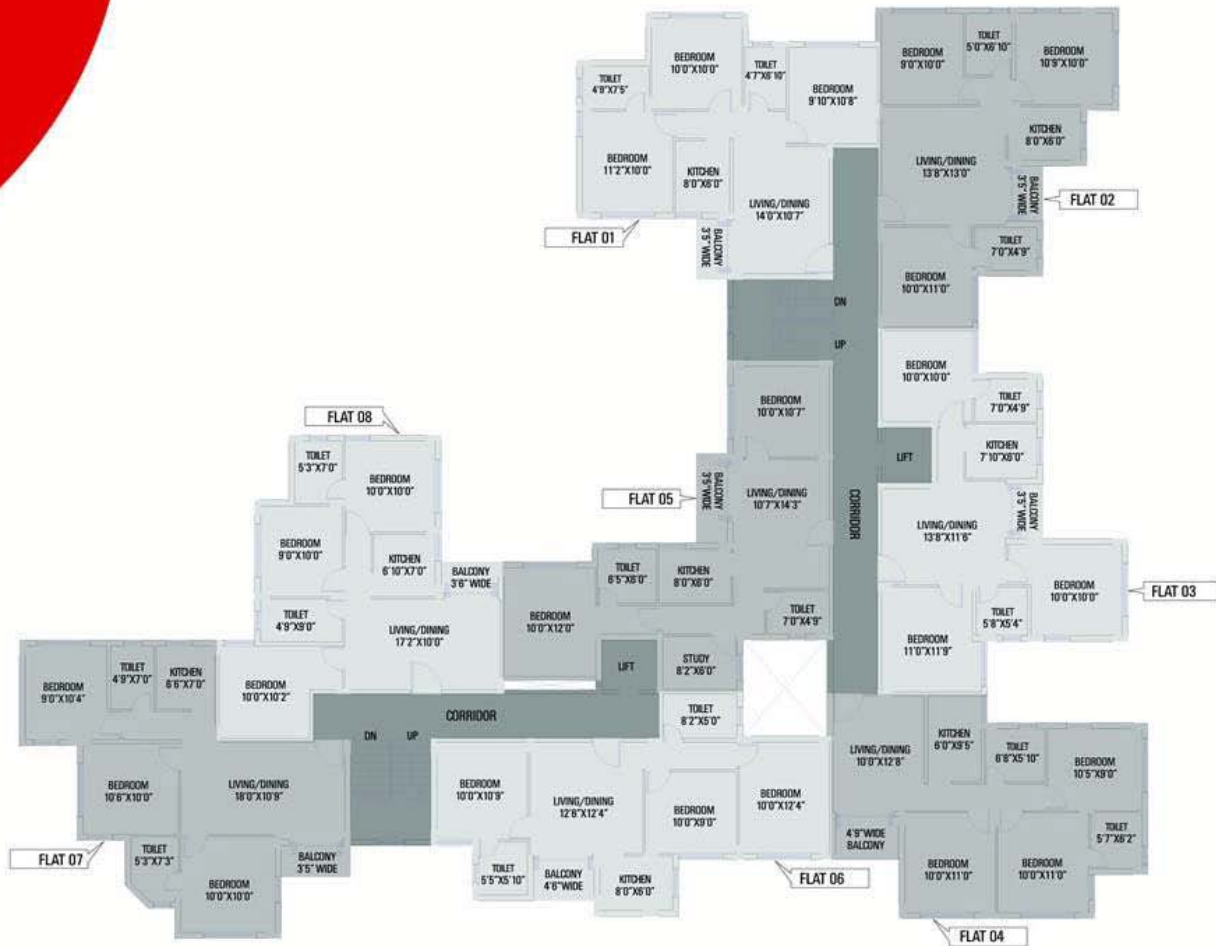
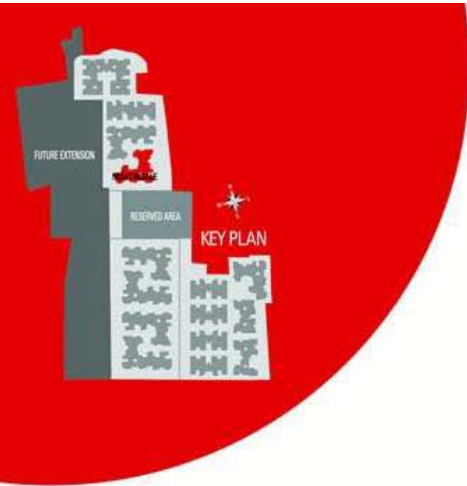
TYPICAL FLOOR PLAN

FLAT 01	960
FLAT 02	970
FLAT 03	970
FLAT 04	1010
FLAT 05	815
FLAT 06	1005
FLAT 07	1005
FLAT 08	970
FLAT 09	955
FLAT 10	975

All areas in sq ft



Cluster- 3 (Nightingale)

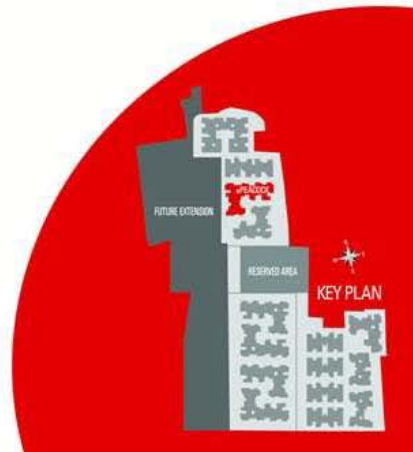
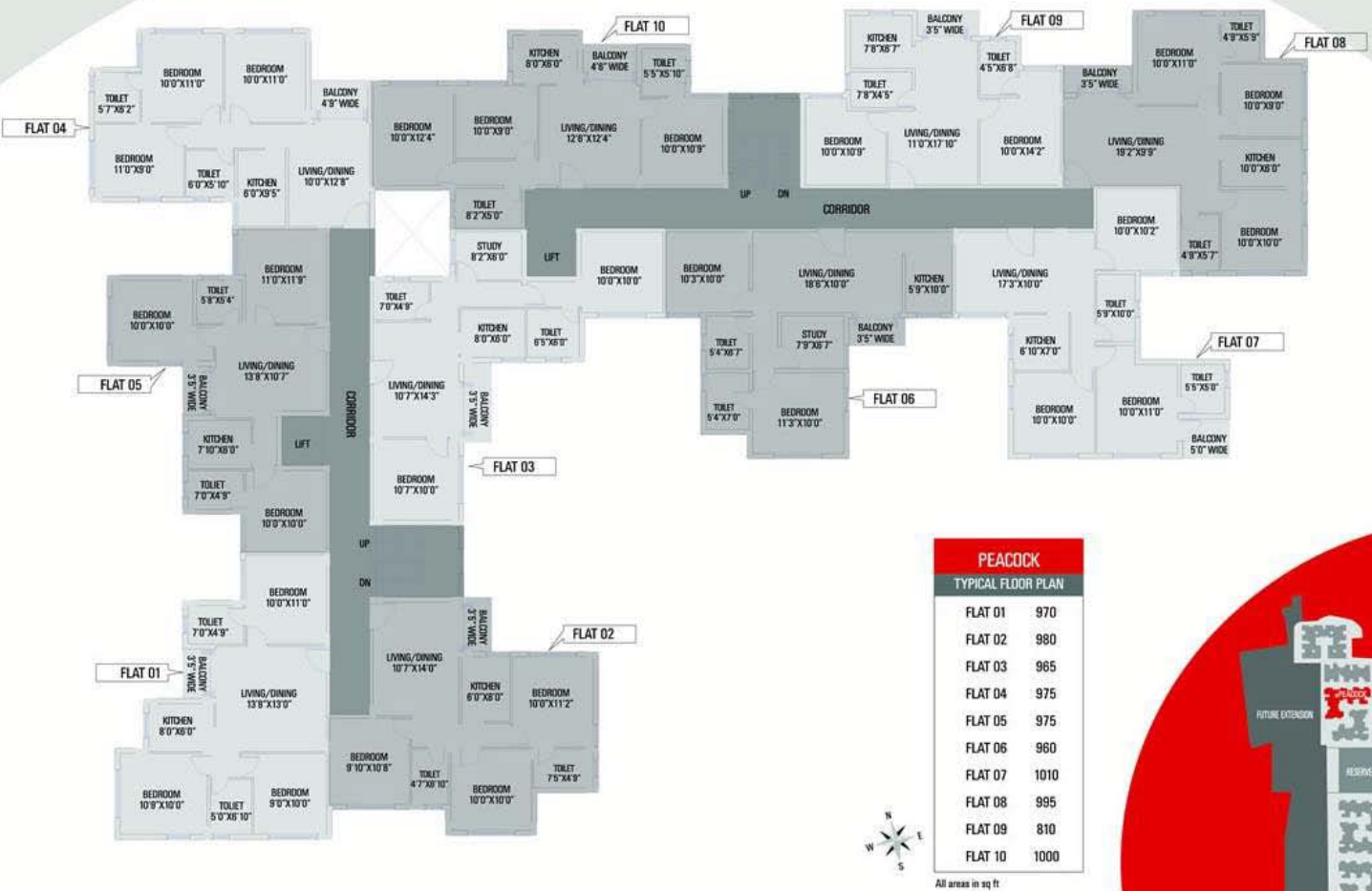


NIGHTINGALE	
TYPICAL FLOOR PLAN	
FLAT 01	980
FLAT 02	970
FLAT 03	980
FLAT 04	980
FLAT 05	990
FLAT 06	1005
FLAT 07	1030
FLAT 08	985

All areas in sq ft



Cluster- 3 (Peacock)

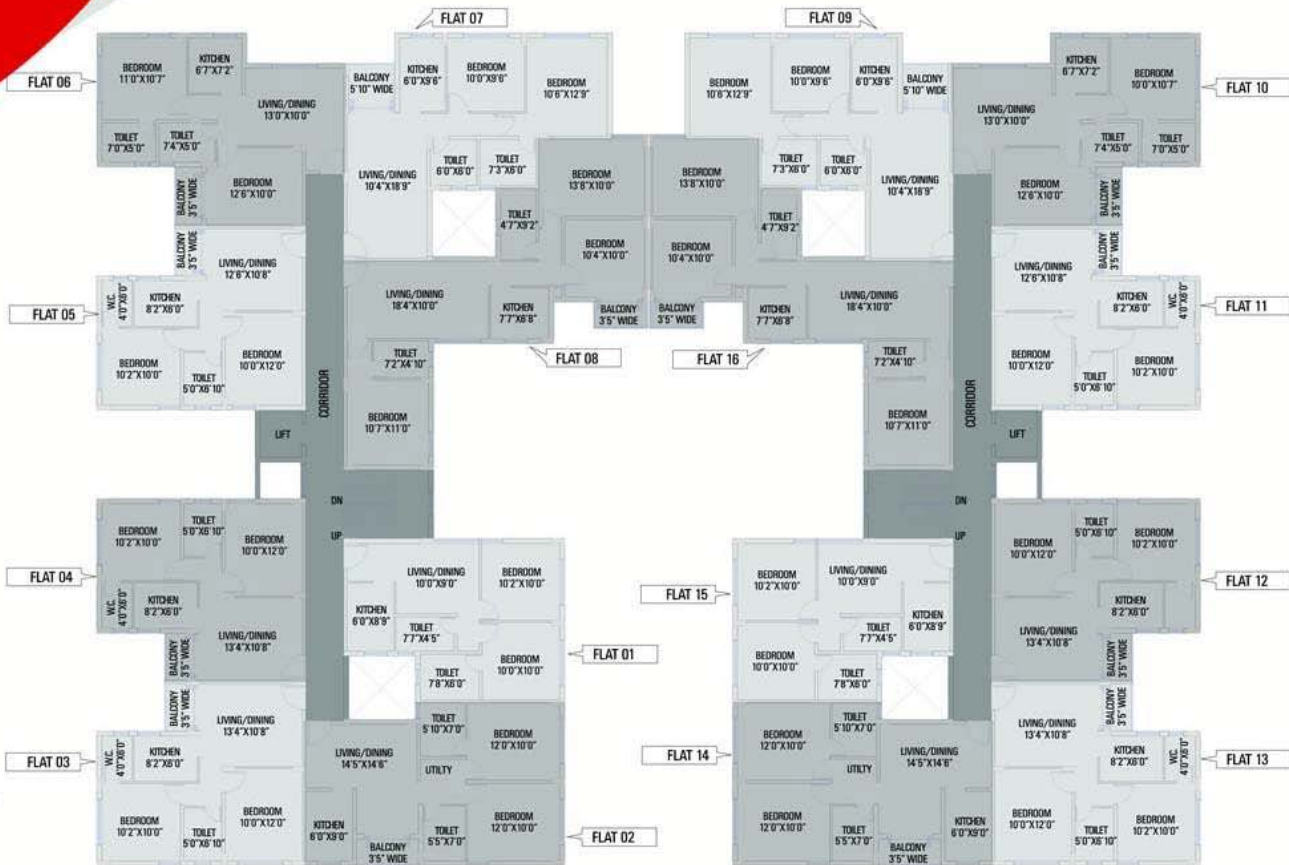


Cluster- 3 (Swan)



SWAN	
TYPICAL FLOOR PLAN	
FLAT 01	715
FLAT 02	890
FLAT 03	760
FLAT 04	765
FLAT 05	755
FLAT 06	840
FLAT 07	930
FLAT 08	1115
FLAT 09	930
FLAT 10	840
FLAT 11	755
FLAT 12	765
FLAT 13	760
FLAT 14	890
FLAT 15	715
FLAT 16	1115

All areas in sq ft



## Developer



Siddha Group

## Architect




Agrawal & Agrawal



12-A, Lord Sinha Road, Shyamkunj Appt.

Flat # 403, Kolkata 700071 WB

+91 81004 44477

 [sales@rabcoestates.com](mailto:sales@rabcoestates.com)