



Exclusive Skywalk Features

- ❖ Leisure Pool
- ❖ Open Air Café
- ❖ Entertainment Area
- ❖ Party Zone
- ❖ Skyplex

Other Skywalk Features

- ❖ Landscaped Greens
- ❖ Sitting Area
- ❖ Joggers Track
- ❖ Telescope Deck
- ❖ Waterbodies with Fountain
- ❖ Outdoor Lounge
- ❖ Kids Play Area
- ❖ Yoga and Meditation Zone
- ❖ Amphitheatre
- ❖ Sundeck
- ❖ Pantry/Toilet

Facilities

- ❖ Visitors Car Park
- ❖ Intercom Network
- ❖ Rainwater Harvesting System
- ❖ Fire Fighting System
- ❖ Cable TV and Broadband Point
- ❖ Water Filtration Plant
- ❖ Sewage Treatment Plant
- ❖ Solar Lighting in Open Areas
- ❖ Power Backup for Common Areas
- ❖ 24/7 Water Supply
- ❖ High Speed Elevators
- ❖ Facility Management Services
- ❖ 24/7 Security and Surveillance

Conveniences

- ❖ Video Door Phones
- ❖ Guest House
- ❖ Pet-friendly Zone
- ❖ Ambulance/Doctor on Call
- ❖ Ramp for People with Special Needs

Ground level highlights

- ❖ Landscaped Green Areas
- ❖ Children's/Kids Play Zone
- ❖ Convenio
- ❖ Multi-level Car Park

Multi-level Car Park

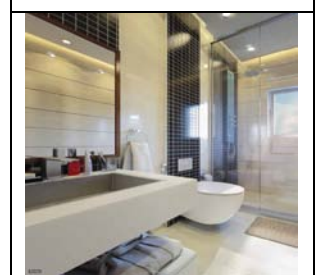
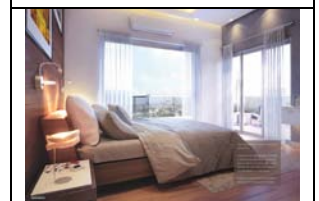
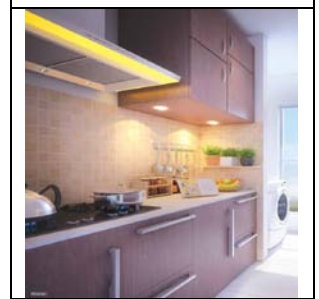
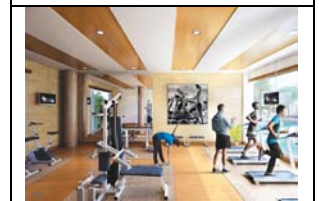
- ❖ Tennis Court
- ❖ Badminton Court
- ❖ Sitting Area

Club highlights

- ❖ Swimming Pool
- ❖ Library cum Lounge
- ❖ Indoor Games Facility
- ❖ Health Club
- ❖ Gymnasium
- ❖ Business Centre
- ❖ Virtual Games Room
- ❖ Cafeteria
- ❖ AC Banquet Hall
- ❖ Multi-activity Room
- ❖ Squash Court

Specifications

- ❖ **Super Structure:-** Earthquake resistant RCC framed structure with Monolithic concrete
- ❖ **Doors:-**
Solid timber frames
Solid core flush shutters
- ❖ **Windows:-** Anodized powder coated aluminum frames with fully glazed shutters
- ❖ **Flooring:-** Glazed vitrified tiles/Italian marble in bedrooms, dining room and balcony
- ❖ **Kitchen:-**
Floor: Anti-skid ceramic tiles
Countertops: Granite with steel sink
Dados: Ceramic tiles up to lintel level from the granite counter top
- ❖ **Toilet:-**
Floor: Anti-skid ceramic tiles
Dados: Ceramic tiles up to 7 ft/up to soffit of lintel level
- ❖ **Sanitary ware:-** Chromium plated fittings with high quality porcelain fixtures
- ❖ **Electrical:-** Superior quality concealed copper (fire resistant, low smoke) wiring Latest modular switches and miniature circuit breakers, TV socket, broadband point
- ❖ **Telephone Wiring:-** Central distribution console networked with all apartments
- ❖ **Exterior:-** Weather-proof exterior finish
- ❖ **Lift Facia:-** Granite/Italian marble
- ❖ **Lift Lobby:-** Vitrified tiles



Location



At Canal South Road, Siddha Sky is mostly open to Nature. The project is well connected to the tech hub at Sector V via the EM Bypass. It is easily accessible from New Town, Dalhousie, Park Street as well as Science City.



Type & Area

Master Plan



Block- 1
1st Floor Plan

Block 1

1st Floor

3 BHK with 3 Toilets & Study • Flat #1



Flat #1	Dimensions	
	Milimeter	Feet
Living/Dining	5125X5325	16'10"X17'6"
Bedroom 1	3650X4125	12'0"X13'7"
Bedroom 2	3575X3575	11'9"X11'9"
Bedroom 3	3300X3700	10'10"X12'2"
Study	2100X3700	6'11"X12'2"
Toilet 1	1775X2950	5'10"X9'8"
Toilet 2	1850X2376	6'1"X7'10"
Toilet 3	1700X2675	5'7"X8'9"
Kitchen	2100X2575	6'11"X8'5"
Balcony	1325	4'4" wide

Flat #2	Dimensions	
	Milimeter	Feet
Living/Dining	5000X11300	16'5"X37'1"
Bedroom 1	4250X3600	13'11"X11'10"
Bedroom 2	4925X4300	16'2"X14'1"
Bedroom 3	4350X4600	14'3"X15'1"
Bedroom 4	4150X4500	13'8"X14'9"
Toilet 1	1800X2575	5'11"X8'5"
Toilet 2	2000X3175	6'7"X10'5"
Toilet 3	2525X1800	8'3"X5'11"
Toilet 4	1725X2975	5'8"X9'9"
Kitchen	3700X3050	12'2"X10'0"
Balcony	2500	8'3" wide

Flat #3	Dimensions	
	Milimeter	Feet
Living/Dining	6775X5450	22'3"X17'11"
Bedroom 1	3425X4425	11'3"X14'6"
Bedroom 2	3425X4000	11'3"X13'2"
Bedroom 3	3600X4000	11'10"X13'2"
Bedroom 4	3775X4000	12'5"X13'2"
Toilet 1	2275X3075	7'5"X10'1"
Toilet 2	2275X3400	7'5"X11'2"
Toilet 3	1850X2975	6'1"X9'9"
Kitchen	2575X2775	8'5"X9'1"
Balcony	1850	6'1" wide

Block 1						
Flat #	Flat Type	BUA		SBUA		OT
		(sq ft)	(sq mt)	(sq ft)	(sq mt)	
1	3BHK+3T+ST	1492	139	2015	187	1638
2	4BHK+4T	2455	228	3315	308	
3	4BHK+3T	1835	170	2480	230	

The BUA of all flats include SQ
BHK = Bedroom, Hall, Kitchen T = Toilet ST = Study SQ = Servant's Quarter
BUA = Bulk Up Area SBUA = Super Bulk Up Area OT = Open Terrace



Block- 1 (Level- 1)

Block 1

Typical Floor Plan

4th, 7th, 10th, 13th, 16th, 19th, 22nd, 25th, 28th, 31st

3 BHK with 3 Toilets & Study • Flat #1

Level 1



Flat #1	Dimensions	
	Millimeter	Feet
Living/Dining	5125X3225	16'10"X17'6"
Bedroom 1	3650X4125	12'0"X13'7"
Bedroom 2	3575X3575	11'9"X11'9"
Bedroom 3	3300X3700	10'10"X12'2"
Study	2100X3750	6'11"X12'2"
Toilet 1	1775X1950	5'10"X9'8"
Toilet 2	1850X2375	6'1"X7'10"
Toilet 3	1700X2675	5'7"X8'9"
Kitchen	2100X2575	6'11"X8'5"
Balcony	1325	4'4" wide

Flat #2	Dimensions	
	Millimeter	Feet
Living/Dining	5000X1300	16'5"X37'1"
Bedroom 1	4250X3600	13'11"X11'10"
Bedroom 2	4925X4300	16'2"X14'1"
Bedroom 3	4350X4500	14'3"X15'1"
Bedroom 4	4150X4500	13'8"X14'9"
Toilet 1	1800X2575	5'11"X8'5"
Toilet 2	2000X3175	6'7"X10'5"
Toilet 3	2525X1800	8'3"X5'11"
Toilet 4	1725X2975	5'8"X9'9"
Kitchen	3700X3050	12'2"X10'0"
Balcony	2500	8'3" wide

Flat #3	Dimensions	
	Millimeter	Feet
Living/Dining	6775X4500	22'3"X17'11"
Bedroom 1	3425X4425	11'3"X14'5"
Bedroom 2	3425X4000	11'3"X13'2"
Bedroom 3	3600X4000	11'10"X13'2"
Bedroom 4	3775X4000	12'5"X13'2"
Toilet 1	2275X3075	7'6"X10'2"
Toilet 2	2275X3400	7'6"X11'2"
Toilet 3	1850X2975	6'1"X9'9"
Kitchen	2575X2775	8'5"X9'1"
Balcony	1850	6'1" wide

Block 1					
Level 1					
Flat #	Flat Type	BUA		SBUA	
		(sq ft)	(sq mt)	(sq ft)	(sq mt)
1	3BHK+3T+ST	1492	139	2015	187
2	4BHK+4T	2455	228	3315	308
3	4BHK+3T	1835	170	2480	230

The BUA of all flats include SQ
BHK = Bedroom, Hall, Kitchen T = Toilet ST = Study SQ = Servants Quarter
BUA = Built Up Area SBUA = Super Built Up Area



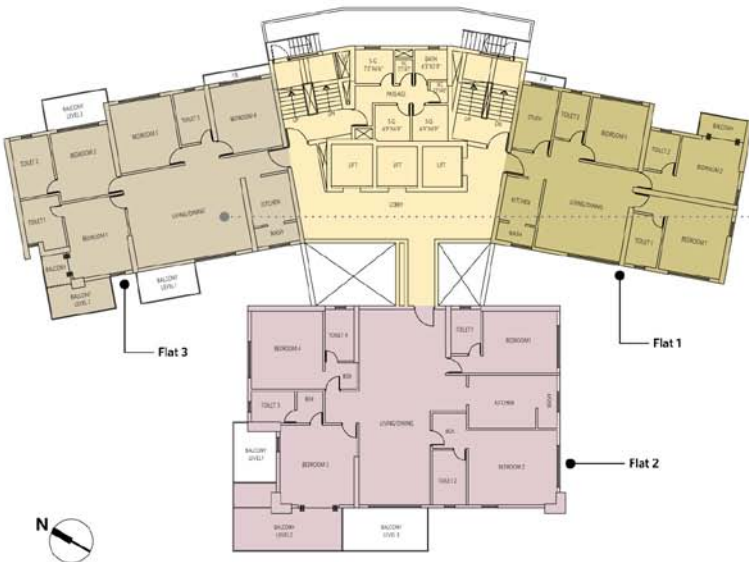
Block 1

Block- 1 (Level- 2)

Block 1

Typical Floor Plan
2nd, 5th, 8th, 11th, 14th, 17th, 20th, 23rd, 26th, 29th
Level 2

4 BHK with 3 Toilets • Flat #3



Flat #1	Dimensions	
	Millimeter	Feet
Living/Dining	5125X5325	16'10"X17'6"
Bedroom 1	3650X4125	12'0"X13'7"
Bedroom 2	3575X3575	11'9"X11'9"
Bedroom 3	3300X3700	10'10"X12'2"
Study	2100X3700	6'11"X12'2"
Toilet 1	1775X2950	5'10"X9'8"
Toilet 2	1850X2375	6'1"X7'10"
Toilet 3	1700X2675	5'7"X8'9"
Kitchen	2100X2575	6'11"X8'6"
Balcony	1325	4'4" wide

Flat #2	Dimensions	
	Millimeter	Feet
Living/Dining	5000X11300	16'5"X37'11"
Bedroom 1	4250X3600	13'11"X11'10"
Bedroom 2	4925X4300	16'2"X14'11"
Bedroom 3	4350X4600	14'3"X15'11"
Bedroom 4	4150X4500	13'8"X14'9"
Toilet 1	1800X2575	5'11"X8'5"
Toilet 2	2000X3175	6'7"X10'5"
Toilet 3	2525X1800	8'3"X5'11"
Toilet 4	1725X2975	5'8"X9'9"
Kitchen	3700X3050	12'2"X10'0"
Balcony	2500	8'3" wide

Flat #3	Dimensions	
	Millimeter	Feet
Living/Dining	6775X6450	22'3"X17'11"
Bedroom 1	3425X4425	11'3"X14'6"
Bedroom 2	3425X4000	11'3"X13'2"
Bedroom 3	3600X4000	11'10"X13'2"
Bedroom 4	3775X4000	12'5"X13'2"
Toilet 1	2275X3075	7'6"X10'1"
Toilet 2	2275X3400	7'6"X11'2"
Toilet 3	1850X2975	6'1"X9'9"
Kitchen	2575X2775	8'5"X9'1"
Balcony	1850	6'1" wide

Block 1 Level 2					
Flat #	Flat Type	BUA		SBUA	
		(sq ft)	(sq mt)	(sq ft)	(sq mt)
1	3BHK+3T+ST	1492	139	2015	187
2	4BHK+4T	2539	236	3430	319
3	4BHK+3T	1838	171	2485	231

The BUA of all Flats include SQ
BHK = Bedroom, Hall, Kitchen T = Toilet ST = Study SQ = Servant's Quarter
BUA = Built Up Area SBUA = Super Built Up Area



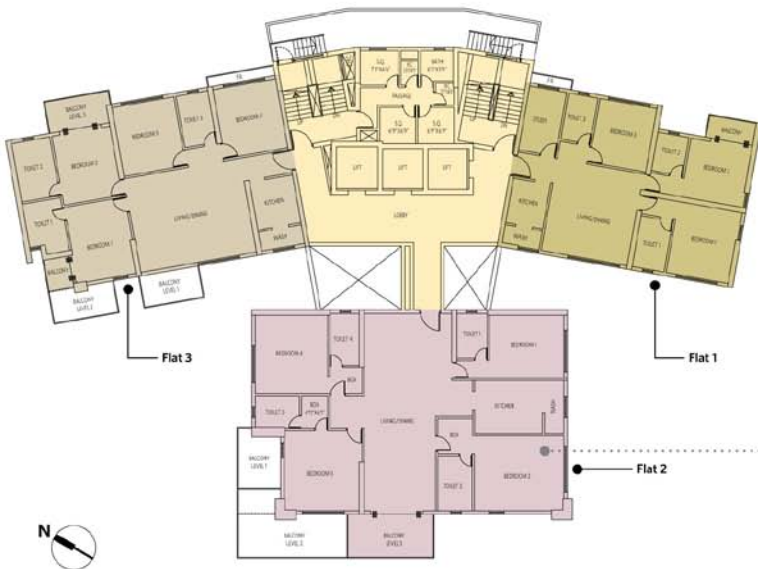
Block- 1 (Level- 3)

Block 1

Level 3

Typical Floor Plan
3rd, 6th, 9th, 12th, 15th, 18th, 21st, 24th, 27th, 30th

4 BHK with 4 Toilets • Flat #2



Flat #1	Dimensions	
	Millimeter	Feet
Living/Dining	5125X5325	16'7"X17'6"
Bedroom 1	3650X4125	12'0"X13'7"
Bedroom 2	3575X3575	11'9"X11'9"
Bedroom 3	3300X3700	10'10"X12'2"
Study	2100X3700	6'11"X12'2"
Toilet 1	1775X2950	5'10"X9'8"
Toilet 2	1850X2375	6'1"X7'10"
Toilet 3	1700X2675	5'7"X8'9"
Kitchen	2100X2575	6'11"X8'5"
Balcony	1325	4'4" wide

Flat #2	Dimensions	
	Millimeter	Feet
Living/Dining	5000X1300	16'5"X37'1"
Bedroom 1	4250X3600	13'11"X11'10"
Bedroom 2	4925X4300	16'2"X14'1"
Bedroom 3	4350X4600	14'3"X15'1"
Bedroom 4	4150X4500	13'8"X14'9"
Toilet 1	1800X2575	5'11"X8'5"
Toilet 2	2000X3175	6'7"X10'5"
Toilet 3	2525X1800	8'3"X5'11"
Toilet 4	1725X2975	5'8"X9'9"
Kitchen	3700X3050	12'9"X10'0"
Balcony	2500	8'3" wide

Flat #3	Dimensions	
	Millimeter	Feet
Living/Dining	6775X5450	22'3"X17'11"
Bedroom 1	3425X4425	11'3"X14'6"
Bedroom 2	3425X4000	11'3"X13'2"
Bedroom 3	3600X4000	11'10"X13'2"
Bedroom 4	3775X4000	12'5"X13'2"
Toilet 1	2275X3075	7'5"X8'3"
Toilet 2	2225X3400	7'5"X11'2"
Toilet 3	1850X2975	6'1"X9'9"
Kitchen	2575X2775	8'5"X9'1"
Balcony	1850	6'1" wide

Block 1		Level 3			
Flat #	Flat Type	BUA		SBUA	
		(sq ft)	(sq mt)	(sq ft)	(sq mt)
1	⊙ 3BHK+3T+ST	1492	139	2015	187
2	⊙ 4BHK+4T	2475	230	3345	311
3	⊙ 4BHK+3T	1838	171	2485	231

The BUA of all flats include SQ.
BHK = Bedroom, Hall, Kitchen T = Toilet ST = Study SQ = Servant's Quarter
BUA = Built Up Area SBUA = Super Built Up Area

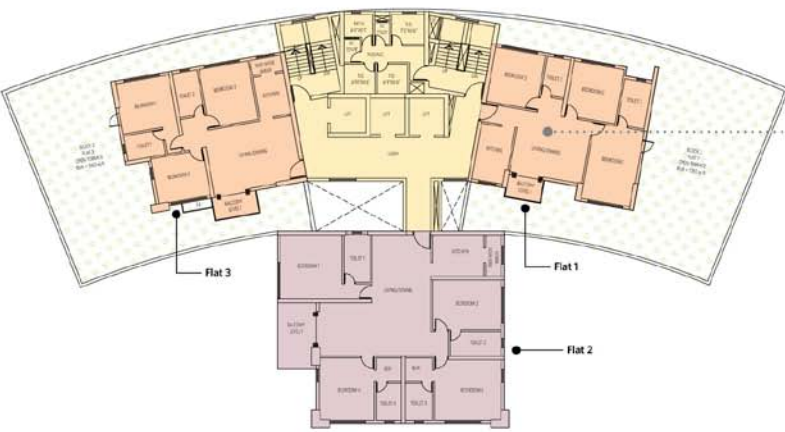


Block- 2
1st Floor Plan

Block 2

1st Floor

3 BHK with 2 Toilets • Flat #1



Flat #1	Dimensions	
	Millimeter	Feet
Living/Dining	4925X4225	16'2"X13'10"
Bedroom 1	3400X5175	11'2"X17'0"
Bedroom 2	3425X3700	11'3"X12'2"
Bedroom 3	3400X3700	11'2"X12'2"
Toilet 1	1850X3100	6'1"X10'2"
Toilet 2	1575X2575	5'2"X8'5"
Kitchen	2275X3800	7'6"X12'6"
Balcony	1550 mm	5'1" wide

Flat #2	Dimensions	
	Millimeter	Feet
Living/Dining	7500X8125	24'7"X26'8"
Bedroom 1	4150X4300	13'8"X14'1"
Bedroom 2	4600X3350	15'1"X11'0"
Bedroom 3	4475X4075	14'8"X13'5"
Bedroom 4	3700X4200	12'2"X13'9"
Toilet 1	1750X3225	5'9"X10'7"
Toilet 2	3450X1625	11'4"X5'4"
Toilet 3	1850X2500	6'1"X8'3"
Toilet 4	1700X2500	5'7"X8'3"
Kitchen	3425X2775	11'3"X9'1"
Balcony	2600	8'6" wide

Flat #3	Dimensions	
	Millimeter	Feet
Living/Dining	6000X4325	19'8"X14'2"
Bedroom 1	3700X3400	12'2"X11'2"
Bedroom 2	3525X3100	11'7"X10'2"
Bedroom 3	3350X4000	11'0"X13'2"
Toilet 1	2575X1700	8'5"X5'7"
Toilet 2	1675X2975	5'6"X9'9"
Kitchen	2100X2825	6'11"X9'3"
Balcony	1550	5'1" wide

Block 2					
1st Floor					
Flat #	Flat Type	BUA		OT	
		(sq ft)	(sq mt)	(sq ft)	(sq ft)
1	3BHK+2T	1251	116	1690	157
2	4BHK+4T	2151	200	2905	270
3	3BHK+2T	1254	116	1695	157

The BUA of all flats include SQ.
BHK = Bedroom, Hall, Kitchen T = Toilet ST = Study SQ = Servant's Quarter
BUA = Built-Up Area SBUA = Super Built-Up Area OT = Open Terrace



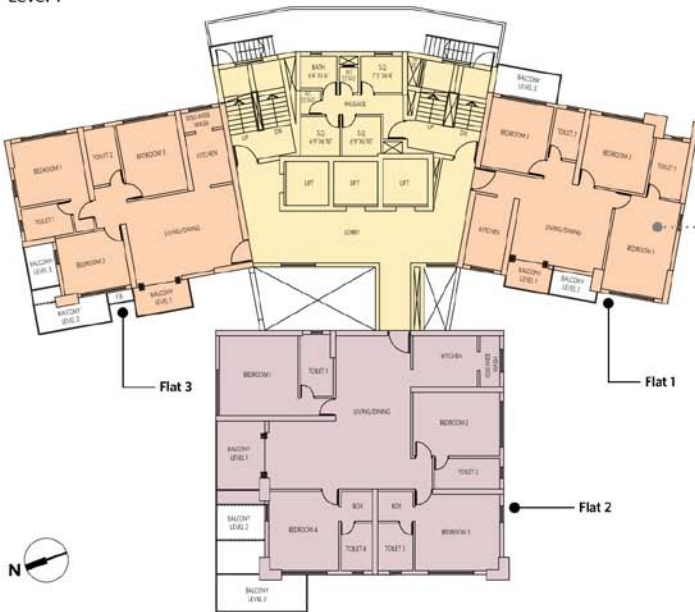
Block- 2 (Level- 1)

Block 2

Level 1

Typical Floor Plan
4th, 7th, 10th, 13th, 16th, 19th, 22nd, 25th, 28th, 31st

3 BHK with 2 Toilets • Flat #1



Flat #1	Dimensions	
	Millimeter	Feet
Living/Dining	4925X4225	16'2" X13'10"
Bedroom 1	3400X3175	11'2" X17'0"
Bedroom 2	3425X3700	11'3" X12'2"
Bedroom 3	3400X3700	11'2" X12'2"
Toilet 1	1850X3100	6'1" X10'2"
Toilet 2	1575X2575	5'2" X8'5"
Kitchen	2275X3800	7'6" X12'6"
Balcony	1550 mm	5'1" wide

Flat #2	Dimensions	
	Millimeter	Feet
Living/Dining	7500X8125	24'7" X26'8"
Bedroom 1	4150X4300	13'8" X14'1"
Bedroom 2	4600X3350	15'1" X11'0"
Bedroom 3	4475X4075	14'8" X13'5"
Bedroom 4	3700X4200	12'2" X13'9"
Toilet 1	1750X3225	5'9" X10'7"
Toilet 2	3450X1625	11'4" X5'4"
Toilet 3	1850X2500	6'1" X8'3"
Toilet 4	1700X2500	5'7" X8'3"
Kitchen	3425X2775	11'3" X9'1"
Balcony	2500	8'6" wide

Flat #3	Dimensions	
	Millimeter	Feet
Living/Dining	6000X4325	19'8" X14'2"
Bedroom 1	3700X3400	12'2" X11'2"
Bedroom 2	3525X3100	11'7" X10'2"
Bedroom 3	3350X4000	11'0" X13'2"
Toilet 1	2575X1700	8'5" X5'7"
Toilet 2	1675X2975	5'6" X9'9"
Kitchen	2100X2825	6'11" X9'3"
Balcony	1550	5'1" wide

Block 2		Level 1			
Flat #	Flat Type	BUA		SBUA	
		(sq ft)	(sq mt)	(sq ft)	(sq mt)
1	3BHK+2T	1251	116	1690	157
2	4BHK+4T	2151	200	2905	270
3	3BHK+2T	1254	116	1695	157

The BUA of all flats includes S2
BHK = Bedroom, Hall, Kitchen T = Toilet SF = Study SQ = Servant's Quarter
BUA = Built Up Area SBUA = Super Built Up Area



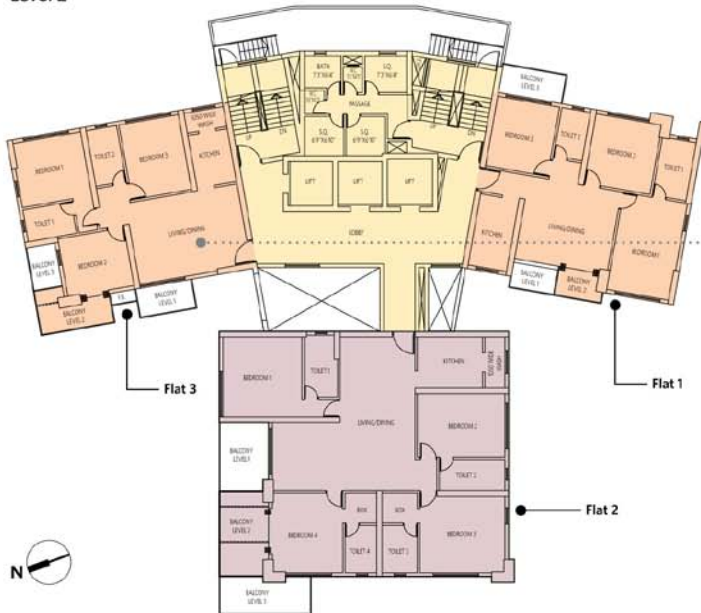
Block- 2 (Level- 2)

Block 2

Level 2

Typical Floor Plan
2nd, 5th, 8th, 11th, 14th, 17th, 20th, 23rd, 26th, 29th

3 BHK with 2 Toilets • Flat #3



Flat #1	Dimensions	
	Millimeter	Feet
Living/Dining	4925X4425	16'2"X14'6"
Bedroom 1	3400X5175	11'2"X17'0"
Bedroom 2	3525X3700	11'7"X12'2"
Bedroom 3	3300X3700	10'10"X12'2"
Toilet 1	1800X3100	5'11"X10'2"
Toilet 2	1525X2575	5'0"X8'5"
Kitchen	2050X3800	6'9"X12'6"
Balcony	1250 mm	4'1" wide

Flat #2	Dimensions	
	Millimeter	Feet
Living/Dining	7500X8125	24'7"X26'8"
Bedroom 1	4150X4300	13'8"X14'1"
Bedroom 2	4600X3250	15'1"X10'0"
Bedroom 3	4475X4075	14'8"X13'5"
Bedroom 4	3700X4200	12'2"X13'9"
Toilet 1	1750X3225	5'9"X10'7"
Toilet 2	3450X1625	11'4"X5'4"
Toilet 3	1850X2500	6'1"X8'3"
Toilet 4	1700X2500	5'7"X8'3"
Kitchen	3425X2775	11'3"X9'1"
Balcony	2600	8'6" wide

Flat #3	Dimensions	
	Millimeter	Feet
Living/Dining	6000X4325	19'8"X14'2"
Bedroom 1	3700X3400	12'2"X11'2"
Bedroom 2	3525X3100	11'7"X10'2"
Bedroom 3	3350X4000	11'0"X13'2"
Toilet 1	2575X1700	8'5"X5'7"
Toilet 2	1675X2975	5'6"X9'9"
Kitchen	2100X2825	6'11"X9'3"
Balcony	1550	5'1" wide

Block 2 Level 2					
Flat #	Flat Type	BUA		SBUA	
		(sq R)	(sq mt)	(sq ft)	(sq mt)
1	3BHK+2T	1250	116	1690	157
2	4BHK+4T	2151	200	2905	270
3	3BHK+2T	1279	119	1730	161

The BUA of all flats include SQ
BHK = Bedroom, Hall, Kitchen, T = Toilet, ST = Study, SQ = Servant's Quarter
BUA = Built Up Area, SBUA = Super Built Up Area



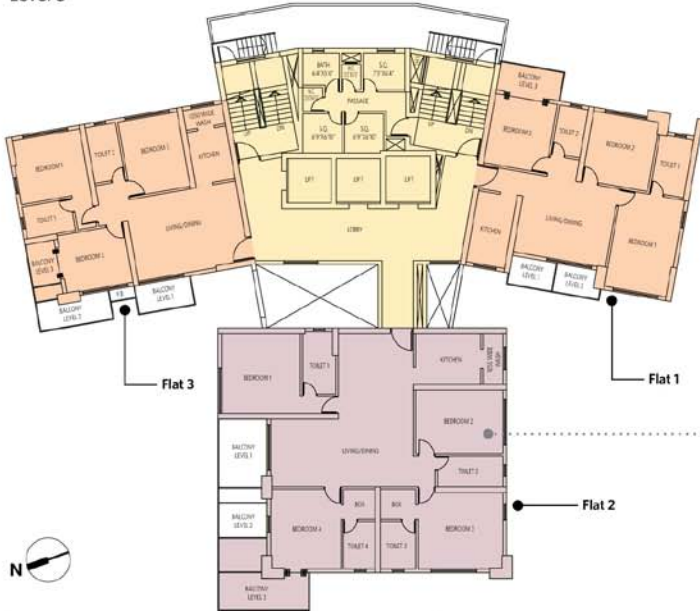
Block- 2 (Level- 3)

Block 2

Typical Floor Plan
3rd, 6th, 9th, 12th, 15th, 18th, 21st, 24th, 27th, 30th

4 BHK with 4 Toilets • Flat #2

Level 3



Flat #1	Dimensions	
	Millimeter	Feet
Living/Dining	4925X4225	16'2"X13'10"
Bedroom 1	3400X3175	11'2"X10'0"
Bedroom 2	3425X3700	11'3"X12'2"
Bedroom 3	3400X3700	11'2"X12'2"
Toilet 1	1850X3100	6'1"X10'2"
Toilet 2	1575X2575	5'2"X8'5"
Kitchen	2275X3800	7'6"X12'6"
Balcony	1550 mm	5'1" wide

Flat #2	Dimensions	
	Millimeter	Feet
Living/Dining	7500X8125	24'7"X26'8"
Bedroom 1	4150X4300	13'8"X14'1"
Bedroom 2	4600X3350	15'1"X11'0"
Bedroom 3	4475X4075	14'8"X13'5"
Bedroom 4	3700X4200	12'2"X13'9"
Toilet 1	1750X3225	5'9"X10'7"
Toilet 2	3450X1625	11'4"X5'4"
Toilet 3	1850X2500	6'1"X8'3"
Toilet 4	1700X2500	5'7"X8'3"
Kitchen	3425X2675	11'3"X8'9"
Balcony	2600	8'6" wide

Flat #3	Dimensions	
	Millimeter	Feet
Living/Dining	6000X4325	19'8"X14'2"
Bedroom 1	3700X3400	12'2"X11'2"
Bedroom 2	3525X3100	11'7"X10'2"
Bedroom 3	3350X4000	11'0"X13'2"
Toilet 1	2575X1700	8'5"X5'7"
Toilet 2	1675X2975	5'6"X9'9"
Kitchen	2100X2825	6'11"X9'3"
Balcony	1550	5'1" wide

Block 2 Level 3					
Flat #	Flat Type	BUA		SBUA	
		(sq ft)	(sq mt)	(sq ft)	(sq mt)
1	3BHK+2T	1267	118	1710	159
2	4BHK+4T	2196	204	2965	276
3	3BHK+2T	1255	117	1695	158

The BUA of all flats include SQ
BHK = Bedroom, Hall, Kitchen T = Toilet ST = Study SQ = Servant's Quarter
BUA = Built Up Area SBUA = Super Built Up Area



Block- 2
29th Floor Plan

Block 4

Typical Floor Plan

3 BHK with 2 Toilets • Flat #1

29th Floor



Flat #1	Dimensions	
	Millimeter	Feet
Living/Dining	5175X4225	17'0"X13'10"
Bedroom 1	3250X4000	10'8"X13'2"
Bedroom 2	3350X4000	11'0"X13'2"
Bedroom 3	3400X3100	11'2"X10'2"
Toilet 1	1725X2625	5'6"X8'7"
Toilet 2	1725X3000	5'8"X9'10"
Kitchen	1900X2900	6'3"X9'5"
Balcony	1550	5'1" wide

Flat #2	Dimensions	
	Millimeter	Feet
Living/Dining	3800X7700	12'6"X24'11"
Bedroom 1	3175X3450	10'5"X11'4"
Bedroom 2	3700X4125	12'2"X13'7"
Bedroom 3	3550X3100	11'8"X10'2"
Toilet 1	2650X1550	8'8"X5'1"
Toilet 2	1675X2375	5'6"X7'10"
Toilet 3	2525X1550	8'3"X5'1"
Kitchen	2650X3650	8'8"X12'0"
Study	1875X3400	6'2"X11'2"
Balcony	2000	6'7" wide

Block 4		29th Floor		BUA		SBUA	
Flat #	Flat Type	(sq ft)	(sq mt)	(sq ft)	(sq mt)	(sq ft)	(sq mt)
1	3BHK+2T	1295	120	1750	163		
2	3BHK+3T+ST	1520	141	2055	191		

BUA of flat 1 and 2 includes SQ.
BHK = Bedroom, Hall, Kitchen T = Toilet ST = Study SQ = Servant's Quarter
BUA = Built Up Area SBUA = Super Built Up Area

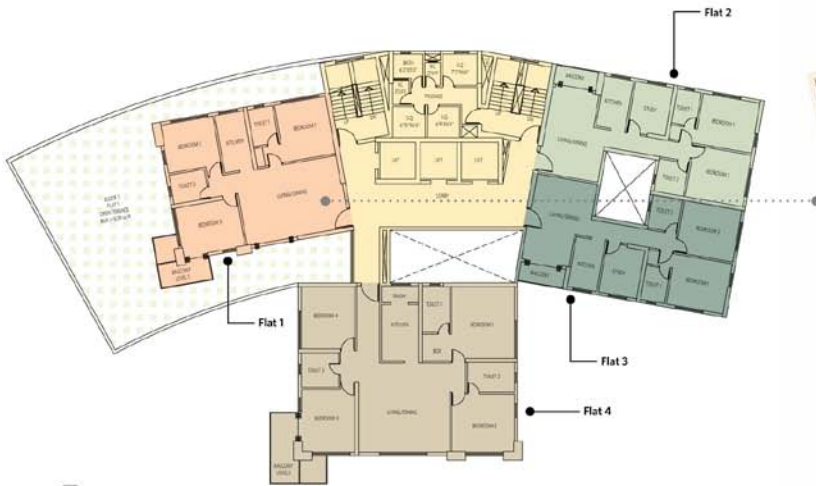


Block- 3 1st Floor Plan

Block 3

1st Floor

3 BHK with 2 Toilets • Flat #1



Flat #1	Dimensions	
	Millimeter	Feet
Living/Dining	6550X4675	21'10" X15'4"
Bedroom 1	3300X3700	10'10" X12'2"
Bedroom 2	3400X3100	11'2" X10'2"
Bedroom 3	4000X3150	13'2" X10'4"
Toilet 1	1625X2375	5'4" X7'10"
Toilet 2	2275X1875	7'6" X6'2"
Kitchen	1850X3700	6'1" X12'2"
Balcony	1550	5'1" wide

Flat #2	Dimensions	
	Millimeter	Feet
Living/Dining	3875X5500	12'9" X18'0"
Bedroom 1	3650X3225	12'0" X10'7"
Bedroom 2	3700X3225	12'2" X10'11"
Toilet 1	1550X2200	5'1" X7'3"
Toilet 2	1900X2100	6'3" X6'11"
Kitchen	1875X3225	6'2" X10'7"
Study	2450X3100	8'1" X10'2"
Balcony	1250	4'1" wide

Flat #3	Dimensions	
	Millimeter	Feet
Living/Dining	3875X5500	12'9" X18'0"
Bedroom 1	3650X3225	12'0" X10'7"
Bedroom 2	3700X3225	12'2" X10'11"
Toilet 1	1550X2200	5'1" X7'3"
Toilet 2	1900X2100	6'3" X6'11"
Kitchen	1875X3225	6'2" X10'7"
Study	2450X3100	8'1" X10'2"
Balcony	1250	4'1" wide

Flat #4	Dimensions	
	Millimeter	Feet
Living/Dining	5775X5675	19'0" X18'8"
Bedroom 1	4000X4550	13'2" X14'11"
Bedroom 2	4000X3700	13'2" X12'2"
Bedroom 3	3400X4000	11'2" X13'2"
Bedroom 4	3400X3950	11'2" X13'0"
Toilet 1	1725X2950	5'8" X9'8"
Toilet 2	2975X1900	9'9" X6'3"
Toilet 3	2375X2200	7'10" X7'3"
Kitchen	2350X3600	7'9" X11'10"
Wash	1050	3'5"
Balcony	1800	5'11" wide

Block 3 1st Floor						
Flat #	Flat Type	BUA		SBUA		OT
		(sq ft)	(sq mt)	(sq ft)	(sq mt)	
1	3BHK+2T	1287	120	1740	162	1679
2	2BHK+2T+ST	961	89	1300	121	
3	2BHK+2T+ST	957	89	1295	120	
4	4BHK+3T	1906	177	2575	239	

BUA of Flat 1 and 4 includes SQ. Flat 2 and 3 does not include SQ.
BHK = Bedroom, HK = Hall, Kitchen T = Toilet ST = Study SQ = Servant's Quarter
BUA = Built Up Area SBUA = Super Built Up Area OT = Open Terrace



Block- 3 (Level- 1)

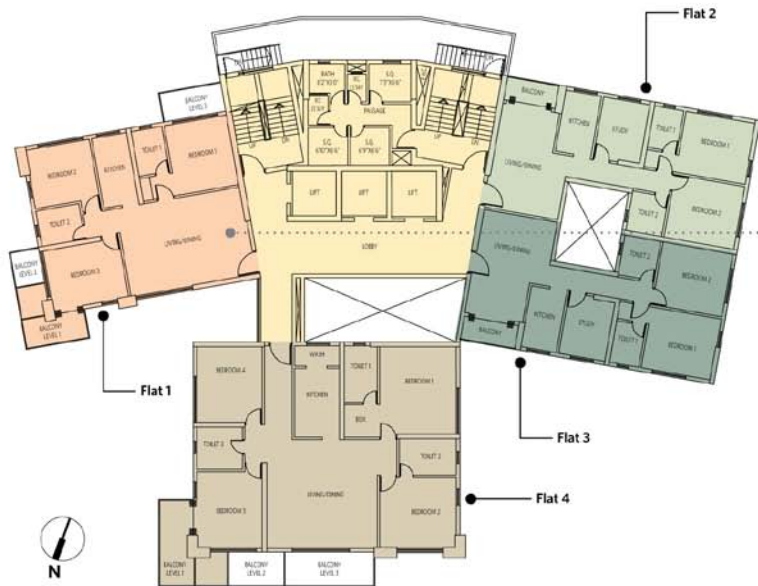
Block 3

Typical Floor Plan

4th, 7th, 10th, 13th, 16th, 19th, 22nd, 25th, 28th, 31st

3 BHK with 2 Toilets • Flat #1

Level 1



Flat #1	Dimensions	
	Millimeter	Feet
Living/Dining	6550X4675	21'10"X15'4"
Bedroom 1	3300X3700	10'10"X12'2"
Bedroom 2	3400X3100	11'2"X10'2"
Bedroom 3	4000X3150	13'2"X10'4"
Toilet 1	1625X2375	5'4"X7'10"
Toilet 2	2275X1875	7'6"X6'2"
Kitchen	1850X3700	6'1"X12'2"
Balcony	1550	5'1" wide

Flat #2	Dimensions	
	Millimeter	Feet
Living/Dining	3875X5500	12'9"X18'0"
Bedroom 1	1650X3275	12'0"X10'7"
Bedroom 2	3700X3325	12'2"X10'11"
Toilet 1	1550X2200	5'1"X7'3"
Toilet 2	1900X2100	6'3"X6'11"
Kitchen	1875X3225	6'2"X10'7"
Study	2450X3100	8'1"X10'2"
Balcony	1250	4'1" wide

Flat #3	Dimensions	
	Millimeter	Feet
Living/Dining	3875X5500	12'9"X18'0"
Bedroom 1	1650X3225	12'0"X10'7"
Bedroom 2	3700X3325	12'2"X10'11"
Toilet 1	1550X2200	5'1"X7'3"
Toilet 2	1900X2100	6'3"X6'11"
Kitchen	1875X3225	6'2"X10'7"
Study	2450X3100	8'1"X10'2"
Balcony	1250	4'1" wide

Flat #4	Dimensions	
	Millimeter	Feet
Living/Dining	5775X5675	19'0"X18'8"
Bedroom 1	4000X4550	13'2"X14'11"
Bedroom 2	4000X3700	13'2"X12'2"
Bedroom 3	3400X4000	11'2"X13'2"
Bedroom 4	3400X3950	11'2"X13'0"
Toilet 1	1725X2950	5'8"X9'8"
Toilet 2	2975X1900	9'9"X6'3"
Toilet 3	2375X2200	7'10"X7'3"
Kitchen	2350X3600	7'9"X11'10"
Wash	1050	3'5"
Balcony	1800	5'11" wide

Block 3					
Level 1					
Flat #	Flat Type	BUA		SBUA	
		(sq ft)	(sq mt)	(sq ft)	(sq mt)
1	3BHK+2T	1287	120	1740	162
2	2BHK+2T+5T	961	89	1300	121
3	2BHK+2T+5T	957	89	1295	120
4	4BHK+3T	1906	177	2575	239

BUA of Flat 1 and 4 includes SQ Flat 2 and 3 does not include SQ
BHK = Bedroom, Hall, Kitchen T = Toilet ST = Study SQ = Servants Quarter
BUA = Built Up Area SBUA = Super Built Up Area



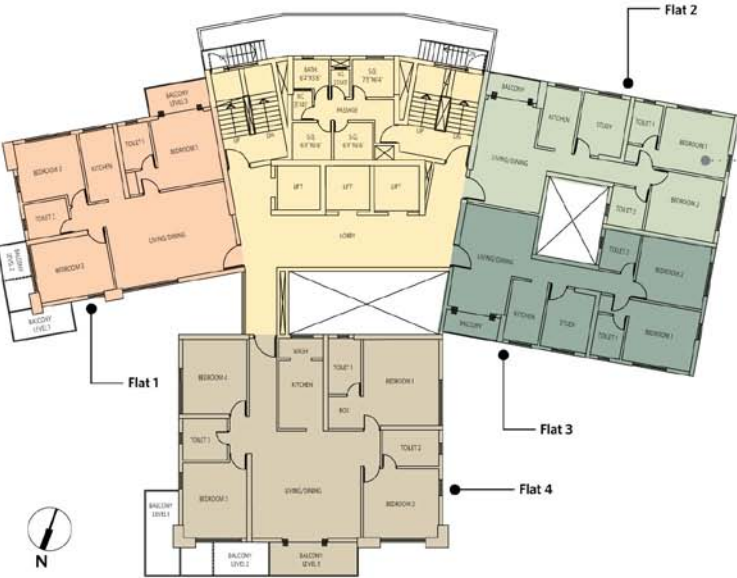
Block- 3 (Level- 3)

Block 3

Typical Floor Plan
3rd, 6th, 9th, 12th, 15th, 18th, 21st, 24th, 27th, 30th

2 BHK with 2 Toilets & Study • Flat #2

Level 3



Flat #1	Dimensions	
	Millimeter	Feet
Living/Dining	6550X4675	21'10"X15'4"
Bedroom 1	3300X3700	10'10"X12'2"
Bedroom 2	3400X3100	11'2"X10'2"
Bedroom 3	4000X3150	13'2"X10'4"
Toilet 1	1625X2375	5'4"X7'10"
Toilet 2	2275X1875	7'6"X6'2"
Kitchen	1850X3700	6'1"X12'2"
Balcony	1550	5'1" wide

Flat #2	Dimensions	
	Millimeter	Feet
Living/Dining	3875X5500	12'9"X18'0"
Bedroom 1	3650X3225	12'0"X10'7"
Bedroom 2	3700X3325	12'2"X10'11"
Toilet 1	1550X2200	5'1"X7'3"
Toilet 2	1900X2100	6'3"X6'11"
Kitchen	1875X3225	6'2"X10'7"
Study	2450X3100	8'1"X10'2"
Balcony	1250	4'1" wide

Flat #3	Dimensions	
	Millimeter	Feet
Living/Dining	3875X5500	12'9"X18'0"
Bedroom 1	3650X3225	12'0"X10'7"
Bedroom 2	3700X3325	12'2"X10'11"
Toilet 1	1550X2200	5'1"X7'3"
Toilet 2	1900X2100	6'3"X6'11"
Kitchen	1875X3225	6'2"X10'7"
Study	2450X3100	8'1"X10'2"
Balcony	1250	4'1" wide

Flat #4	Dimensions	
	Millimeter	Feet
Living/Dining	5775X5675	19'0"X18'8"
Bedroom 1	4000X4550	13'2"X14'11"
Bedroom 2	4000X3700	13'2"X12'2"
Bedroom 3	3400X4000	11'2"X13'2"
Bedroom 4	3400X3950	11'2"X13'0"
Toilet 1	1725X2950	5'8"X9'8"
Toilet 2	2975X1900	9'9"X6'3"
Toilet 3	2375X2200	7'10"X7'3"
Kitchen	2350X3600	7'9"X11'10"
Wash	1050	3'5"
Balcony	1800	5'11" wide

Block 3					
Level 3					
Flat #	Flat Type	BUA		SBUA	
		(sq ft)	(sq mt)	(sq ft)	(sq mt)
1	3BHK+2T	1261	117	1705	158
2	2BHK+2T+ST	961	89	1300	121
3	2BHK+2T+ST	957	89	1295	120
4	4BHK+3T	1880	175	2540	236

BUA of Flat 3 and 4 includes SQ, Flat 2 and 3 does not include SQ.
BHK = Bedroom, Hall, Kitchen T = Toilet ST = Study SQ = Servant's Quarter
BUA = Built Up Area SBUA = Super Built Up Area



Block- 4 (Level- 1)

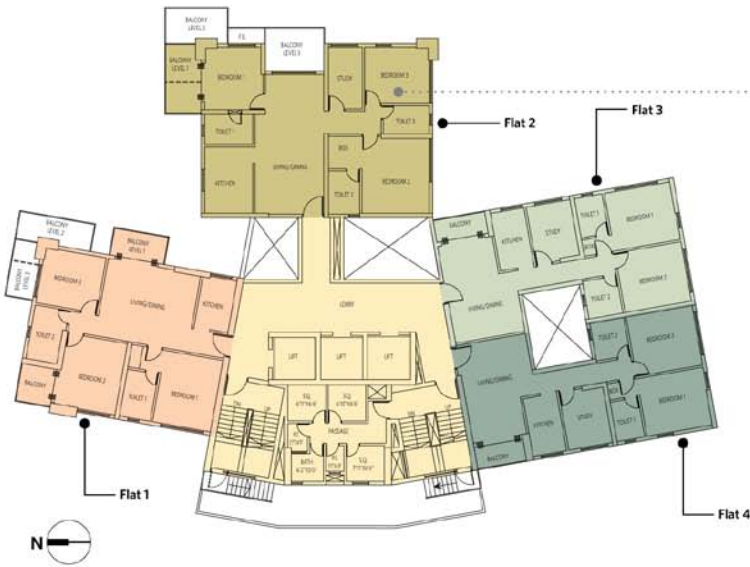
Block 4

Typical Floor Plan

1st, 4th, 7th, 10th, 13th, 16th, 19th, 22nd, 25th, 28th

Level 1

3 BHK with 3 Toilets & Study • Flat #2



Flat #1	Dimensions	
	Millimeter	Feet
Living/Dining	5175X4225	17'0"X13'10"
Bedroom 1	3250X4000	10'8"X13'2"
Bedroom 2	3350X4000	11'0"X13'2"
Bedroom 3	3400X3100	11'2"X10'2"
Toilet 1	1725X2625	5'6"X8'7"
Toilet 2	1725X3000	5'8"X9'10"
Kitchen	1900X2900	6'3"X9'6"
Balcony	1550	5'1" wide

Flat #2	Dimensions	
	Millimeter	Feet
Living/Dining	3800X7700	12'6"X25'3"
Bedroom 1	3175X3450	10'5"X11'4"
Bedroom 2	3700X4125	12'2"X13'7"
Bedroom 3	3550X3100	11'8"X10'2"
Toilet 1	2650X1675	8'8"X5'5"
Toilet 2	1725X2375	5'8"X7'10"
Toilet 3	2525X1550	8'3"X5'1"
Kitchen	2650X3650	8'8"X12'0"
Study	1875X3400	6'2"X11'2"
Balcony	2000	6'7" wide

Flat #3	Dimensions	
	Millimeter	Feet
Living/Dining	3875X5500	12'9"X18'0"
Bedroom 1	3650X3225	12'0"X10'7"
Bedroom 2	3700X3325	12'2"X10'11"
Toilet 1	1550X2200	5'1"X7'3"
Toilet 2	1900X2100	6'3"X6'11"
Kitchen	1875X3225	6'2"X10'7"
Study	2450X3100	8'1"X10'2"
Balcony	1250	4'1" wide

Flat #4	Dimensions	
	Millimeter	Feet
Living/Dining	3875X5500	12'9"X18'0"
Bedroom 1	3650X3225	12'0"X10'7"
Bedroom 2	3700X3325	12'2"X10'11"
Toilet 1	1550X2200	5'1"X7'3"
Toilet 2	1900X2100	6'3"X6'11"
Kitchen	1875X3225	6'2"X10'7"
Study	2450X3100	8'1"X10'2"
Balcony	1250	4'1" wide

Block 4 Level 1					
Flat #	Flat Type	BUA		SBUA	
		(sq ft)	(sq mt)	(sq ft)	(sq mt)
1	3BHK-2T	1261	117	1705	158
2	3BHK-3T+ST	1487	138	2010	187
3	2BHK-2T+ST	958	89	1295	120
4	2BHK-2T+ST	960	89	1295	121

BUA of flat 1 and 4 includes SQ. Flat 2 and 3 does not include SQ.
BHK = Bedroom, Hall, Kitchen. T = Toilet. ST = Study. SQ = Servant's Quarter.
BUA = Built Up Area. SBUA = Super Built Up Area.

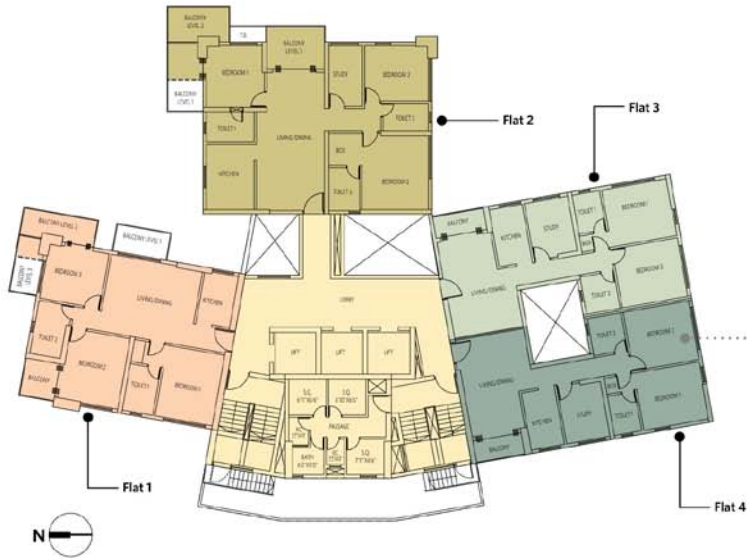


Block- 4 (Level- 2)

Block 4

Typical Floor Plan
2nd, 5th, 8th, 11th, 14th, 17th, 20th, 23rd, 26th
Level 2

2 BHK with 2 Toilets & Study • Flat #4



Flat #1	Dimensions	
	Millimeter	Feet
Living/Dining	5175X4225	17'0" X13'10"
Bedroom 1	3250X4000	10'8" X13'2"
Bedroom 2	3300X4000	11'0" X13'2"
Bedroom 3	3400X3100	11'2" X10'2"
Toilet 1	1725X2625	5'6" X8'7"
Toilet 2	1725X3000	5'8" X9'10"
Kitchen	1900X2900	6'3" X9'6"
Balcony	1550	5'1" wide

Flat #2	Dimensions	
	Millimeter	Feet
Living/Dining	3800X7700	12'6" X25'3"
Bedroom 1	3175X3450	10'5" X11'4"
Bedroom 2	3700X4125	12'2" X13'7"
Bedroom 3	3550X3100	11'8" X10'2"
Toilet 1	2650X1675	8'8" X5'6"
Toilet 2	1725X2375	5'8" X7'10"
Toilet 3	2525X1550	8'3" X5'1"
Kitchen	2650X3650	8'8" X12'0"
Study	1875X3400	6'2" X11'2"
Balcony	2000	6'7" wide

Flat #3	Dimensions	
	Millimeter	Feet
Living/Dining	3875X5500	12'9" X18'0"
Bedroom 1	3650X3225	12'0" X10'7"
Bedroom 2	3700X3325	12'2" X10'11"
Toilet 1	1550X2200	5'1" X7'3"
Toilet 2	1900X2100	6'3" X6'11"
Kitchen	1875X3225	6'2" X10'7"
Study	2450X3100	8'1" X10'2"
Balcony	1250	4'1" wide

Flat #4	Dimensions	
	Millimeter	Feet
Living/Dining	3875X5500	12'9" X18'0"
Bedroom 1	3650X3225	12'0" X10'7"
Bedroom 2	3700X3325	12'2" X10'11"
Toilet 1	1550X2200	5'1" X7'3"
Toilet 2	1900X2100	6'3" X6'11"
Kitchen	1875X3225	6'2" X10'7"
Study	2450X3100	8'1" X10'2"
Balcony	1250	4'1" wide

Block 4 Level 2					
Flat #	Flat Type	BUA		SBUA	
		(sq ft)	(sq mt)	(sq ft)	(sq mt)
1	3BHK+2T	1295	120	1750	163
2	3BHK+3T+ST	1521	141	2055	191
3	2BHK+2T+ST	958	89	1295	120
4	2BHK+2T+ST	960	89	1295	120

BUA of Flat 1 and 4 includes SQ. Flat 2 and 3 does not include SQ.
BHK = Bedroom, Hall, Kitchen T = Toilet ST = Study SQ = Servant's Quarter
BUA = Built Up Area SBUA = Super Built Up Area



Block- 4 (Level- 3)

Block 4

Typical Floor Plan
3rd, 6th, 9th, 12th, 15th, 18th, 21st, 24th, 27th

3 BHK with 2 Toilets • Flat #1

Level 3



Flat #1	Dimensions	
	Millimeter	Feet
Living/Dining	5175X4225	17'0"X13'10"
Bedroom 1	3250X4000	10'8"X13'2"
Bedroom 2	3350X4000	11'0"X13'2"
Bedroom 3	3400X3100	11'2"X10'2"
Toilet 1	1725X2625	5'6"X8'7"
Toilet 2	1725X3000	5'8"X9'10"
Kitchen	1900X2900	6'3"X9'6"
Balcony	1550	5'1" wide

Flat #2	Dimensions	
	Millimeter	Feet
Living/Dining	3800X7700	12'6"X25'3"
Bedroom 1	3175X3450	10'5"X11'4"
Bedroom 2	3700X4125	12'2"X13'7"
Bedroom 3	3550X3100	11'8"X10'2"
Toilet 1	2650X1675	8'8"X5'6"
Toilet 2	1725X2375	5'8"X7'10"
Toilet 3	2525X1550	8'3"X5'1"
Kitchen	2650X3650	8'8"X12'0"
Study	1875X3400	6'2"X11'2"
Balcony	2000	6'7" wide

Flat #3	Dimensions	
	Millimeter	Feet
Living/Dining	3875X5500	12'9"X18'0"
Bedroom 1	3650X3225	12'0"X10'7"
Bedroom 2	3700X3325	12'2"X10'11"
Toilet 1	1550X2200	5'1"X7'3"
Toilet 2	1900X2100	6'3"X6'11"
Kitchen	1875X3225	6'2"X10'7"
Study	2450X3100	8'1"X10'2"
Balcony	1250	4'1" wide

Flat #4	Dimensions	
	Millimeter	Feet
Living/Dining	3875X5500	12'9"X18'0"
Bedroom 1	3650X3225	12'0"X10'7"
Bedroom 2	3700X3325	12'2"X10'11"
Toilet 1	1550X2200	5'1"X7'3"
Toilet 2	1900X2100	6'3"X6'11"
Kitchen	1875X3225	6'2"X10'7"
Study	2450X3100	8'1"X10'2"
Balcony	1250	4'1" wide

Block 4		BUA		SSUA	
Flat #	Flat Type	(sq ft)	(sq mt)	(sq ft)	(sq mt)
1	3BHK+2T	1261	117	1705	158
2	3BHK+3T+5T	1490	138	2015	187
3	2BHK+2T+5T	958	89	1295	120
4	2BHK+2T+5T	960	89	1295	121

BUA of flat 1 and 4 includes SQ, Flat 2 and 3 does not include SQ.
BHK = Bedroom, Hall, Kitchen T = Toilet ST = Study SQ = Servant's Quarter
BUA = Built Up Area SSUA = Super Built Up Area



Developer




Architect



12-A, Lord Sinha Road, Shyamkunj Appt.
Flat # 403, Kolkata 700071 WB

+91 81004 44477

 sales@rabcoestates.com