



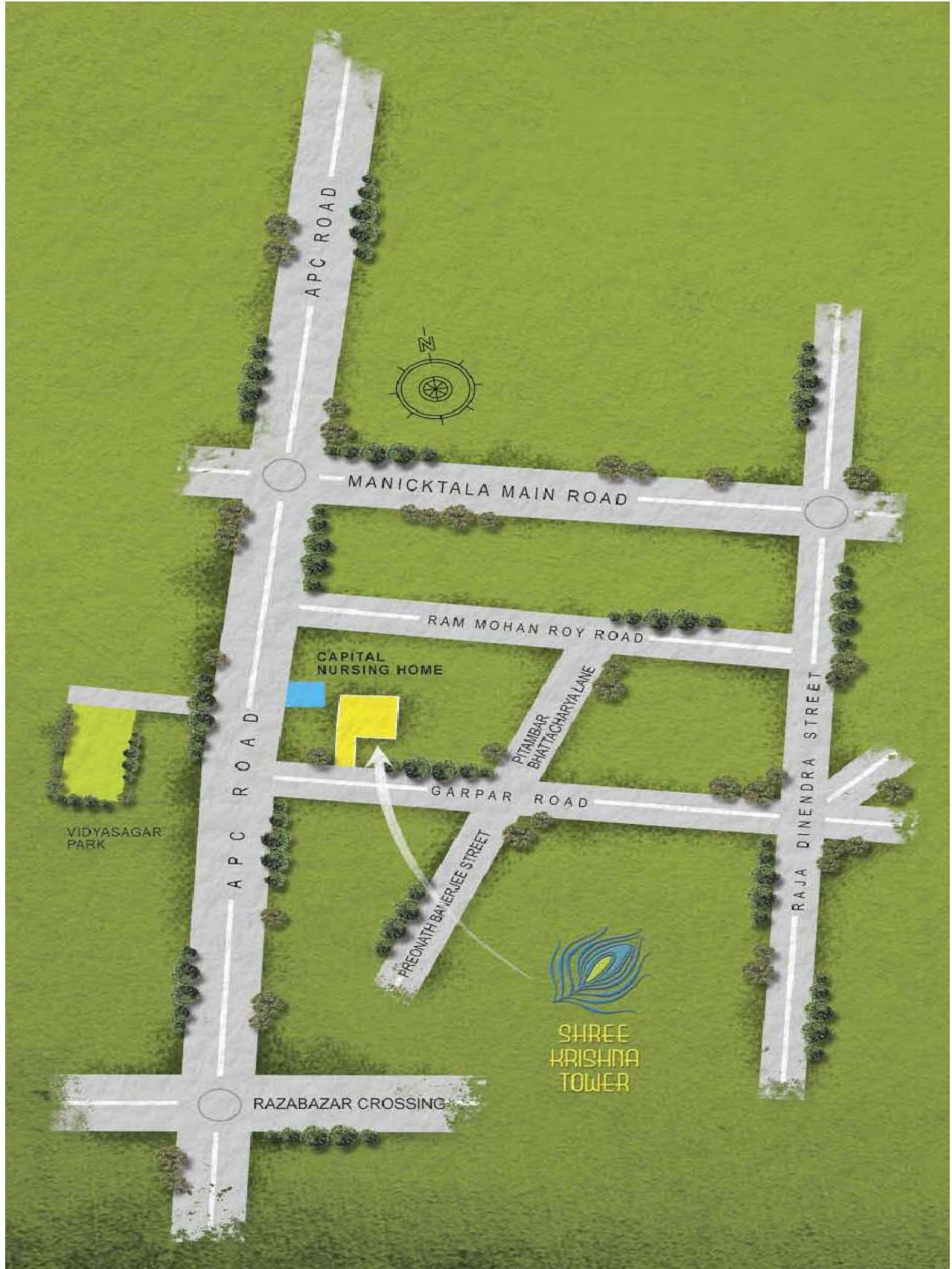
Amenities

- ❖ AC Gymnasium
- ❖ 24 hours power backup generator
- ❖ Round the clock security
- ❖ Decorated AC lobby
- ❖ Modern elevators
- ❖ 24 hrs water supply
- ❖ Adequate parking space

Specifications

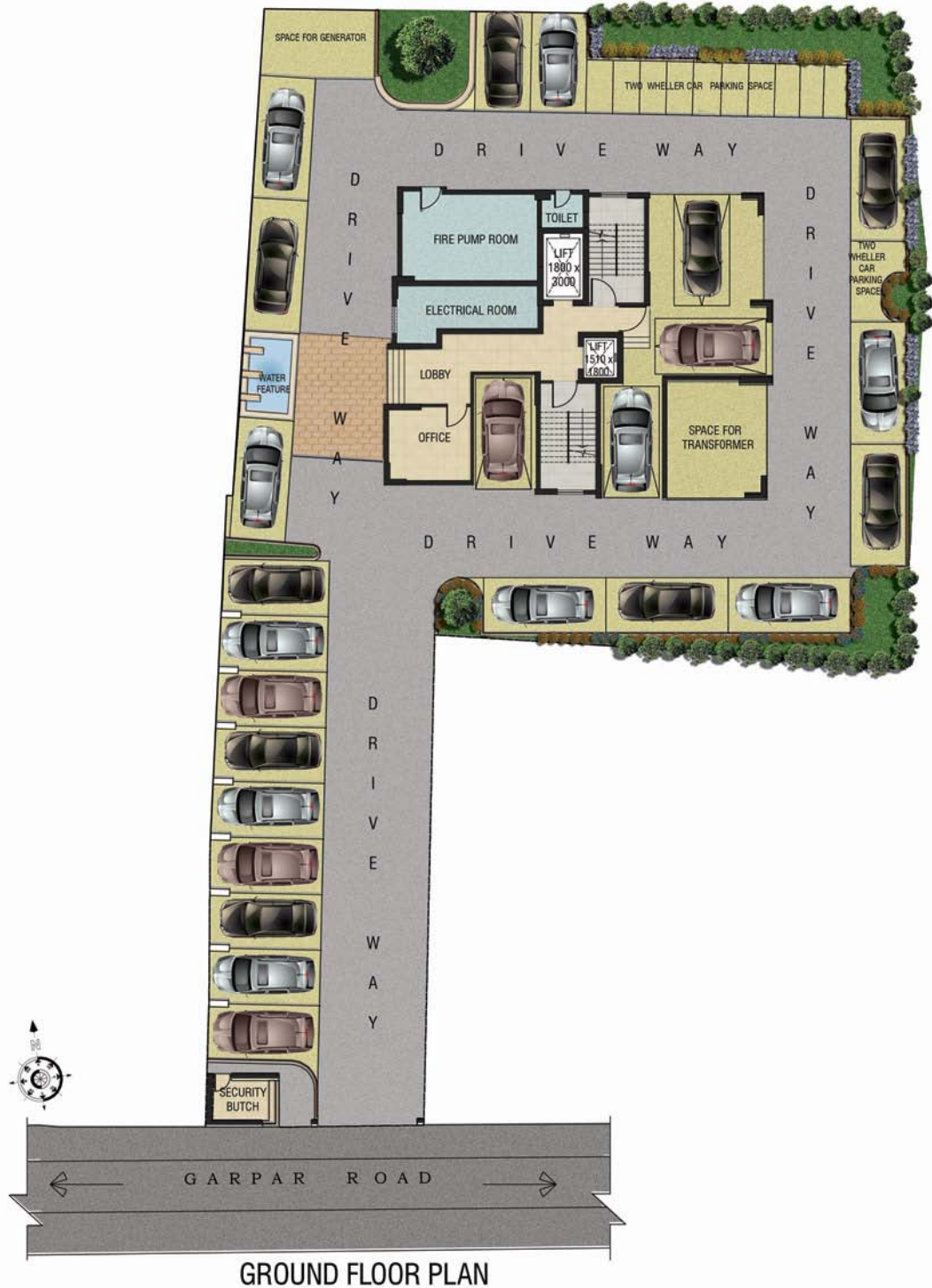
- ❖ **Structure:-** Earth-quake resistant structure, RCC framed structure with antitermite treatment in the foundation.
- ❖ **Walls:-** Interior walls with mortar plaster and Wall Putty finish of Birla or equivalent brand.
- ❖ **Doors:-** Quality flush doors with laminate finish in all doors. Lock fittings in main doors, Mortise Handle with lock and Tower Bolt from inside in the bedrooms. Latches or Tower Bolts in other doors.
- ❖ **Windows:-** UPVC / Aluminum Anodized Sliding Window. Grills upto full height.
- ❖ **Flooring:-** Good Quality Vitrified tiles (Glossy finish). Ceramic / Vitrified Tiles (matt finish) in kitchen, washroom and balcony.
- ❖ **Balcony:-** Grills upto full height.
- ❖ **Toilets:-** Ceramic Tiles Up to lintel / Door height in wall. Low flow CP Fixtures of Reputed Brand, Wall Hang Water Closet, Geyser connected with Central Solar Geyser except in Common Toilet.
- ❖ **Kitchen:-** Wall Tiles made of 2 ft Glazed Ceramic Tiles above counter. Black Granite Counter with low flow CP Fixtures, SS Sink and a Kitchen Chimney of Reputed Brand.
- ❖ **Electrical:-** Modular Switches, Fire Retardant Copper electrical concealed wiring. Provisions for TV, Telephone, AC. points in all rooms & living rooms.
- ❖ **Lift / Elevator:-** One Stretcher / Service Lift and One 6 passenger lift of KONE / OTIS or equivalent Brand.
- ❖ **Generator:-** 1,500 VA power from Generator for each Flat. Generator for Lift and Common areas covered.
- ❖ **Elevation:-** Weather Coat Paint of reputed brands.

Location

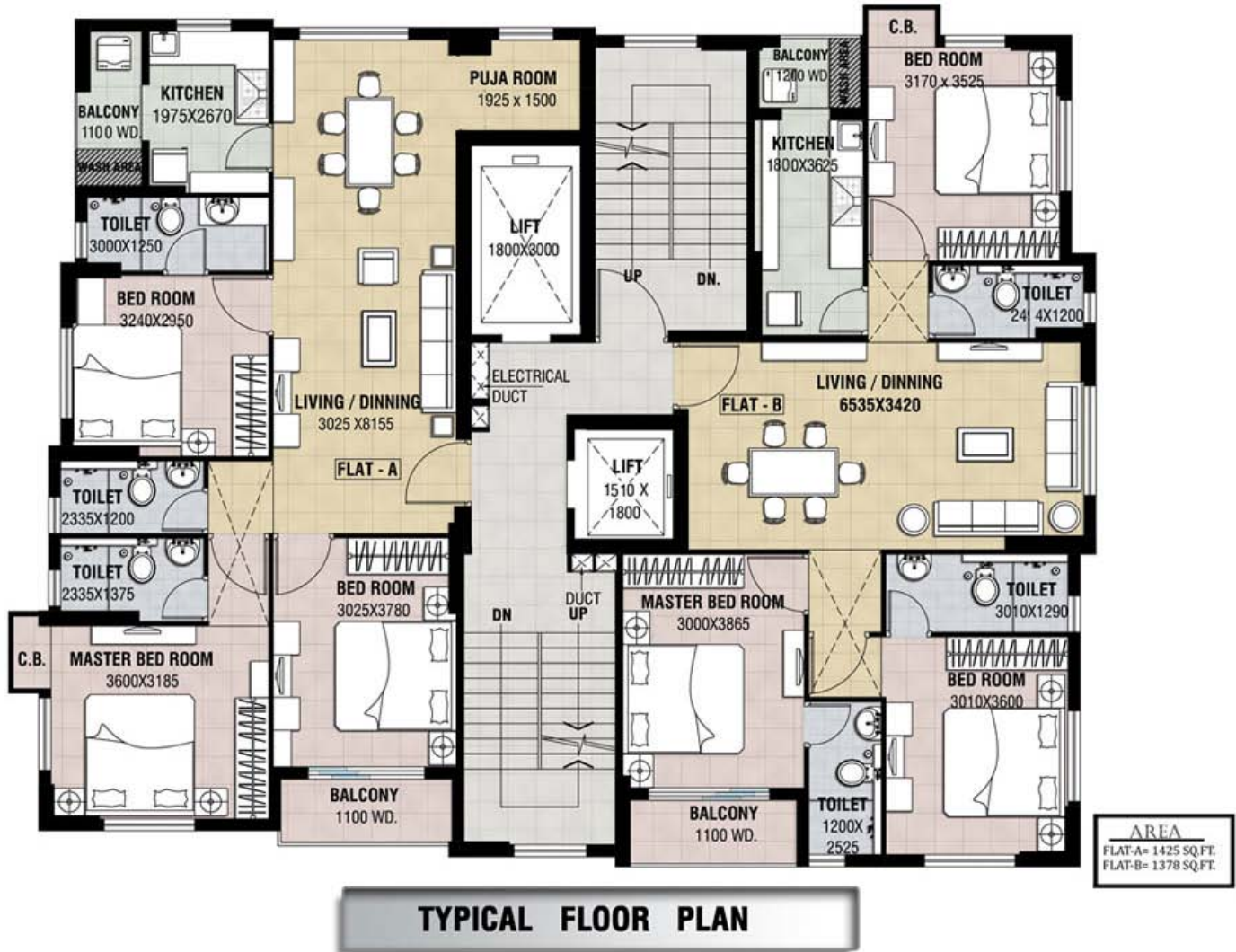


Type & Area

Ground Floor Plan



Typical Floor Plan



Developer



Innovation, Quality, Trust

Yaduka Group

Architect

Interarch



12-A, Lord Sinha Road, Shyamkunj Appt.

Flat # 403, Kolkata 700071 WB

+91 81004 44477



sales@rabcoestates.com