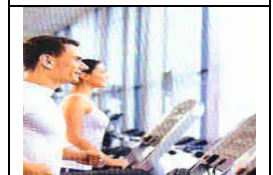




Amenities

- ❖ Sensory Garden
- ❖ Grand Lawn
- ❖ Multi-purpose Game Area
- ❖ Chess Court
- ❖ Table Tennis Court
- ❖ Kid's Play Area
- ❖ Amphitheatre
- ❖ Open Space for Yoga
- ❖ Meditation Area
- ❖ Artificial Cricket Pitch
- ❖ Stone Walkways
- ❖ Swimming Pool (Adult & Kids)
- ❖ Steam & Changing Rooms
- ❖ Gym
- ❖ Barbeque
- ❖ Crèche
- ❖ Community Hall (Air Conditioned)
- ❖ Indoor Games
- ❖ Library
- ❖ 24x7 Water Supply
- ❖ 24x7 Surveillance on Filtration Plant
- ❖ Power Backup



Specifications

- ❖ **Doors:-**
 - Rooms fitted with 35mm thick flush door
 - Shutter hung from brass barrel
 - Night latches for entrance doors
 - Mortise locks and door stoppers on bedroom and kitchen doors
 - Bathroom latches on toilet doors with enamel paint for Inside Surface

- ❖ **Windows:-**
 - Feature a standard section of anodized/powder coated aluminium or UPVC sliding window with glass inserts and matching fittings

- ❖ **Floors:-**
 - Vitrified tiles in living and Dining/Bedroom areas.
 - Ceramic tiles in bathrooms with provision of Anti-skid tiles at floor.
 - Kitchen floor finished with quality ceramic tiles.
 - Lift lobbies feature quality vitrified tiles with matching skirting.
 - Ground floor lobby finished with Italian Marble flooring.
 - Other common areas floored with screed concrete

- ❖ **Kitchen:-**
 - Granite top cooking platforms with one stainless steel sink fixed therewith (Jaquar or equivalent taps).
 - Kitchens to be equipped with water filters.

❖ **Walls:-**

External walls completed in cement and sand plaster with cement paint and/or texture finish and glazing as per Architectural.

Internal walls finished with neat POP punning.

Kitchens feature ceramic tiles up to 2ft in height above the kitchen counter.

Bathrooms completed with designer ceramic tiles up to door height.

❖ **CP Fittings:-**

Concealed piping system for hot & cold water lines.

Geysers in master bathrooms.

Sleek single liver fittings of jaquar or an equivalent brand.

Matching glass mirrors, shelves, soap trays and towel rails.

❖ **Sanitary Fittings:-**

Porcelain sanitary fittings of Parryware/Hindware or equivalent brands.

❖ **Fire Suppression & Detection:-**

Provision of fire fighting system.

❖ **Electrical Wiring & Fittings:-**

Totally concealed copper wiring for all rooms.

Air conditioning plug points in all bedrooms and living rooms.

Light and plug points in dining/drawing and bedrooms as per architecture scheme.

Video door phones at the main entrance doors.

Telephone points in living rooms and all bedrooms.

Generator power during power failure for lighting and domestic purpose to the extent of 1 watt/sq ft of built up area of each unit.

Security systems- CCTV monitoring at ground floor lobby.

Geyser points in all toilets and kitchens.

Compatible wiring that can be hooked up to a cable television network with a connection thereof in living rooms and all bedrooms.

Location



Type & Area

Master Plan

LEGEND

1. KIDS PLAY AREA
2. SPACE FOR ARTIFICIAL CRICKET PITCH
3. PLANTING BED
4. SEAT PLANTER
5. SWIMMING POOL
6. KIDS' POOL
7. CABANA
8. OUTDOOR SHOWER
9. CHANGING ROOMS
10. OUTDOOR GAME
11. YOGA AREA
12. OUTDOOR TABLE GAMES
13. INDOOR GAMES ROOM
14. PODIUM LEVEL GRAND LAWN
15. SPIRAL SEAT
16. WAY TO LIFT LOBBY
17. COMMUNITY HALL
18. SIT-OUT AREA
19. AMPHITHEATER
20. LAWN

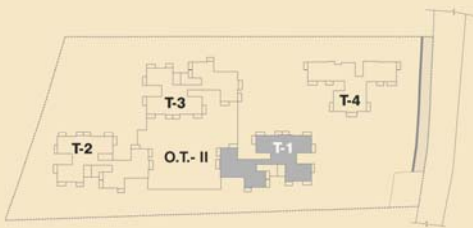


MASTER LAYOUT

Typical Floor Plan
Tower- 1



UTOPIA
NATURALLY BEAUTIFUL LIFE



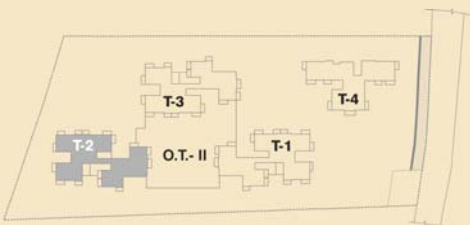
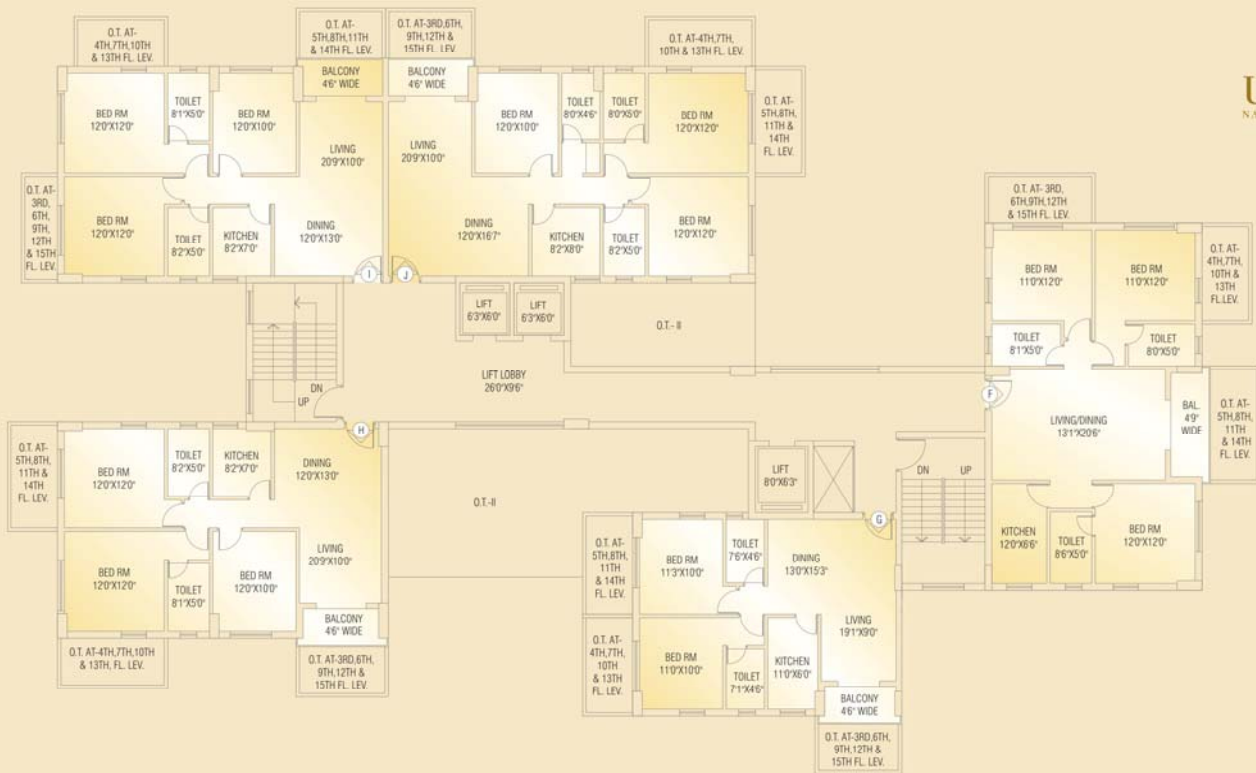
TOWER 1
TYPICAL FLOOR PLAN



Typical Floor Plan
Tower- 2



UTOPIA
NATURALLY BEAUTIFUL LIFE



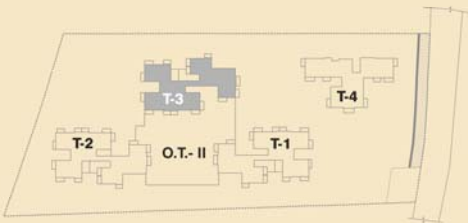
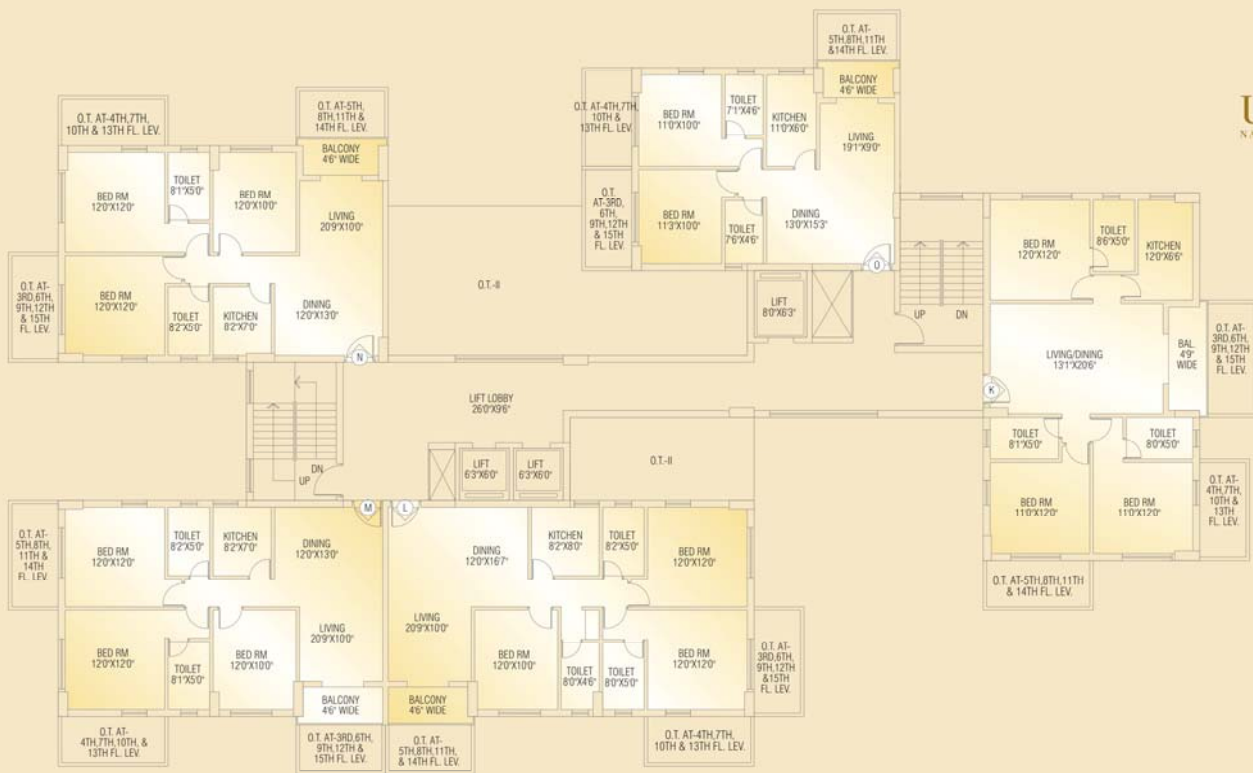
TOWER 2
TYPICAL FLOOR PLAN



Typical Floor Plan
Tower- 3



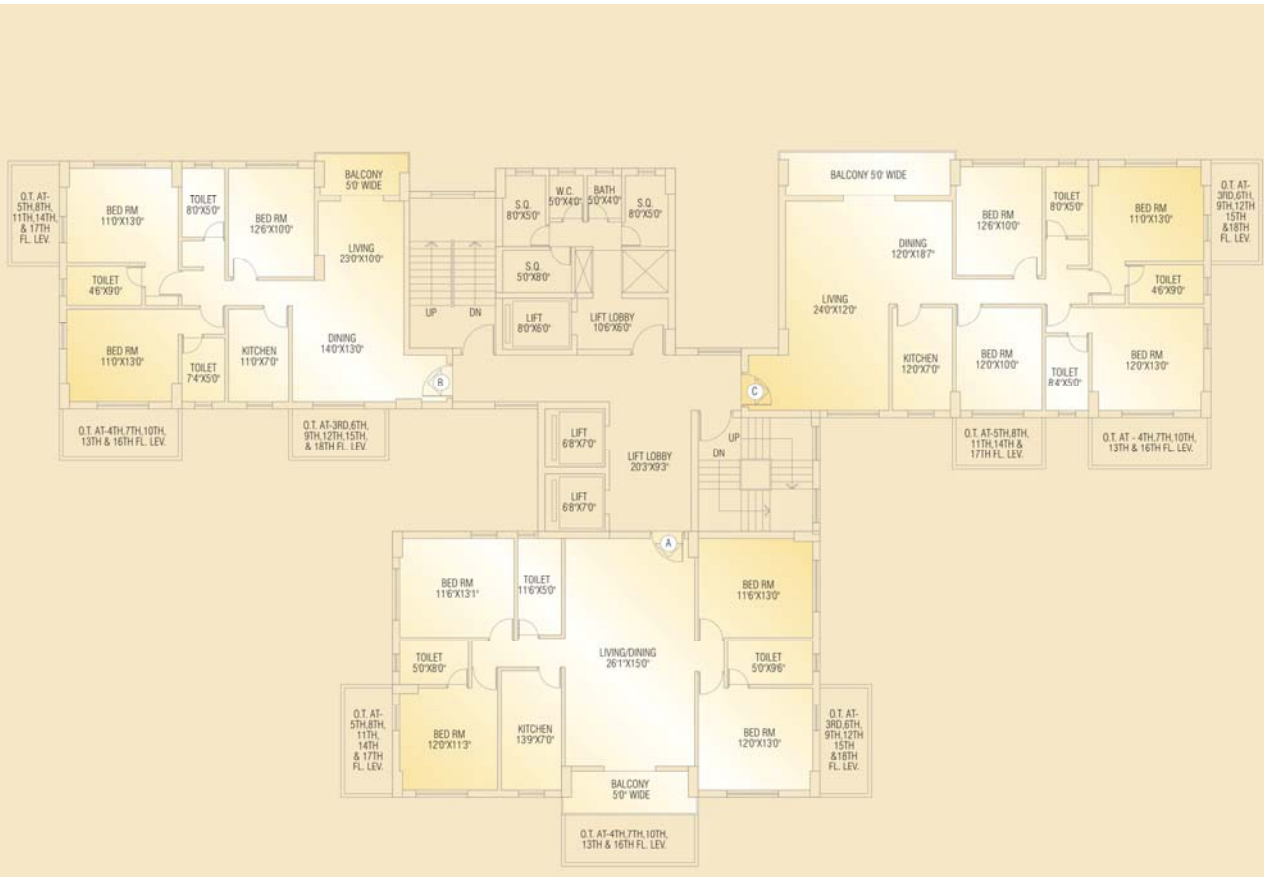
UTOPIA
NATURALLY BEAUTIFUL LIFE



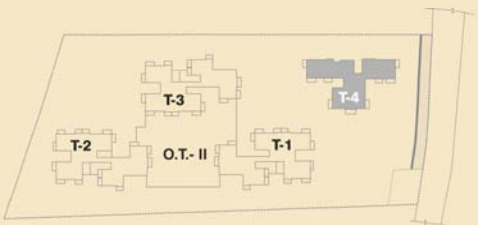
TOWER 3
TYPICAL FLOOR PLAN



Typical Floor Plan
Tower- 4



UTOPIA
NATURALLY BEAUTIFUL LIFE



TOWER 4
TYPICAL FLOOR PLAN



Developer



Natural Group



Shivom Realty



12-A, Lord Sinha Road, Shyamkunj Appt.

Flat # 403, Kolkata 700071 WB

+91 98325 12345/8100 44 44 77

 sales@rabcoestates.com